

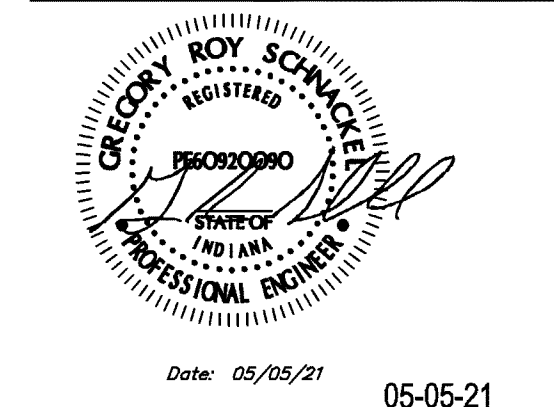
All ideas, designs, arrangement and plans indicated and represented by this drawing are the property of Panda Express Inc. and were created for use on this specific product. None of these ideas, designs, arrangements or plans may be used by or disclosed to any person, firm, or corporation without the written permission of Panda Express Inc.

REVISIONS:

ISSUE DATE:	
04/27/21	WALMART REVIEW
05/05/21	ISSUE FOR PERMIT

DRAWN BY:

PANDA PROJECT #:	S8-22-D8044
PANDA STORE #:	D8044
ARCH PROJECT #:	Q511070001



Schnackel
engineers_®

New York ■ Omaha ■ Los Angeles ■ Seattle ■ Honolulu

800-581-0963 www.schnackel.com

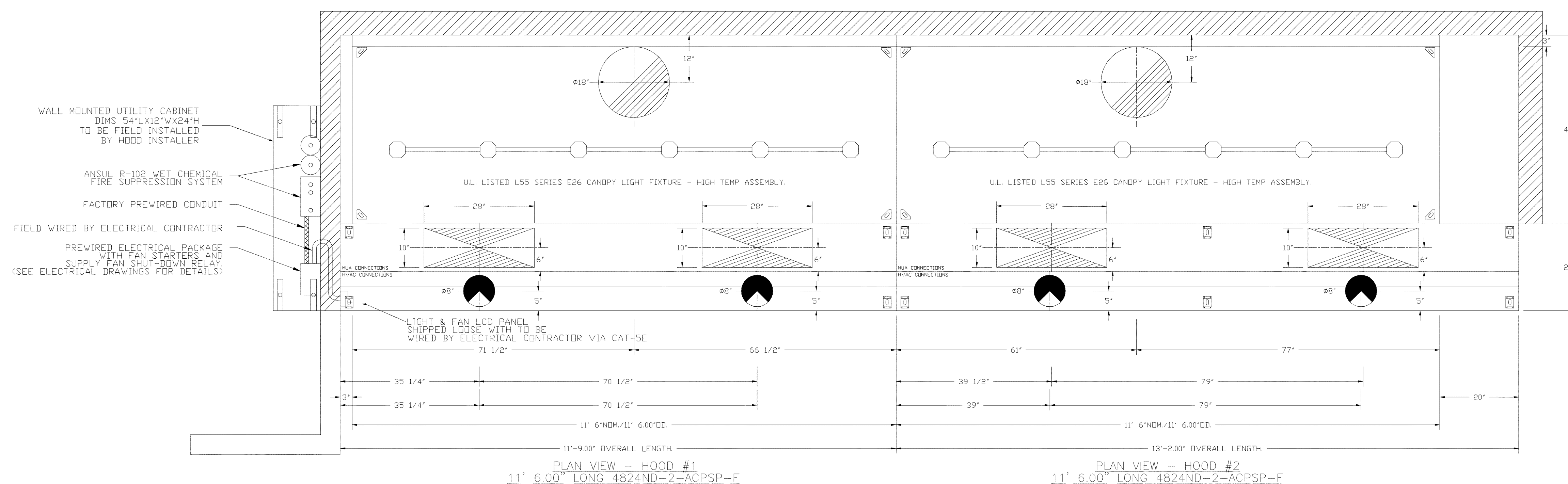
ENR 10/26/97 17

PANDA EXPRESS
TRUE WARM & WELCOME
STATE ST. & NEW RD.
GREENFIELD, IN 46140

M-401

HOOD DETAIL PLAN

TRUE WARM & WELCOME 2300 R5

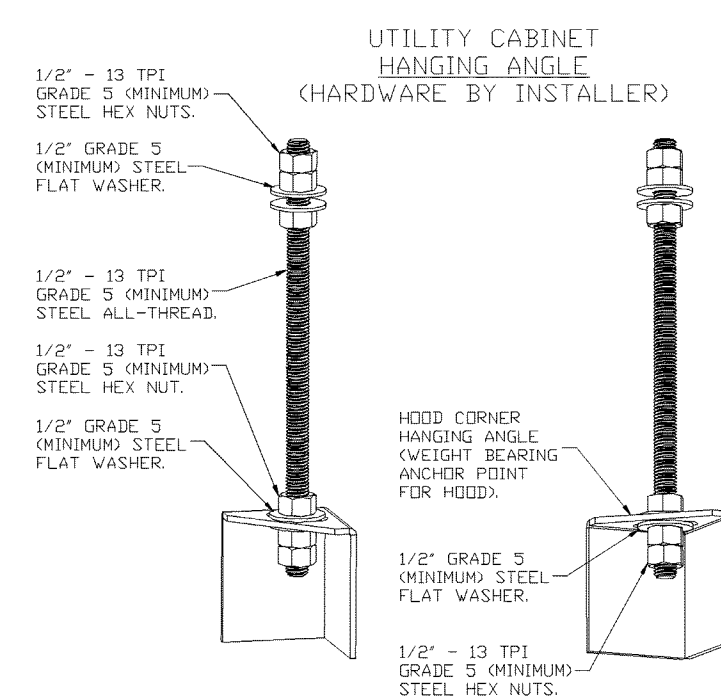


ACPSP SHIPS LOOSE FOR FIELD INSTALLATION

ACPSP SHIPS LOOSE FOR FIELD INSTALLATION

WALL-MOUNT UTILITY CABINET
ASSEMBLY INSTRUCTIONS

HANGING ANGLE MUST BE SUPPORTED WITH 1/2" - 13 TPI
GRADE 5 (MINIMUM) ALL-THREAD. SANDWICH HANGING
ANGLES AND CEILING ANCHOR POINTS WITH 1/2" GRADE 5
(MINIMUM) STEEL FLAT WASHERS AND 1/2" - 13 TPI
GRADE 5 (MINIMUM) HEX NUTS AS SHOWN. MUST USE
DOUBLED HEX NUT CONFIGURATION BENEATH UTILITY
CABINET HANGING ANGLES AND ABOVE CEILING ANCHORS.
MAINTAIN 1/4" OF EXPOSED THREADS BENEATH BOTTOM
HEX NUT. TORQUE ALL HEX NUTS TO 57 FT-LBS.

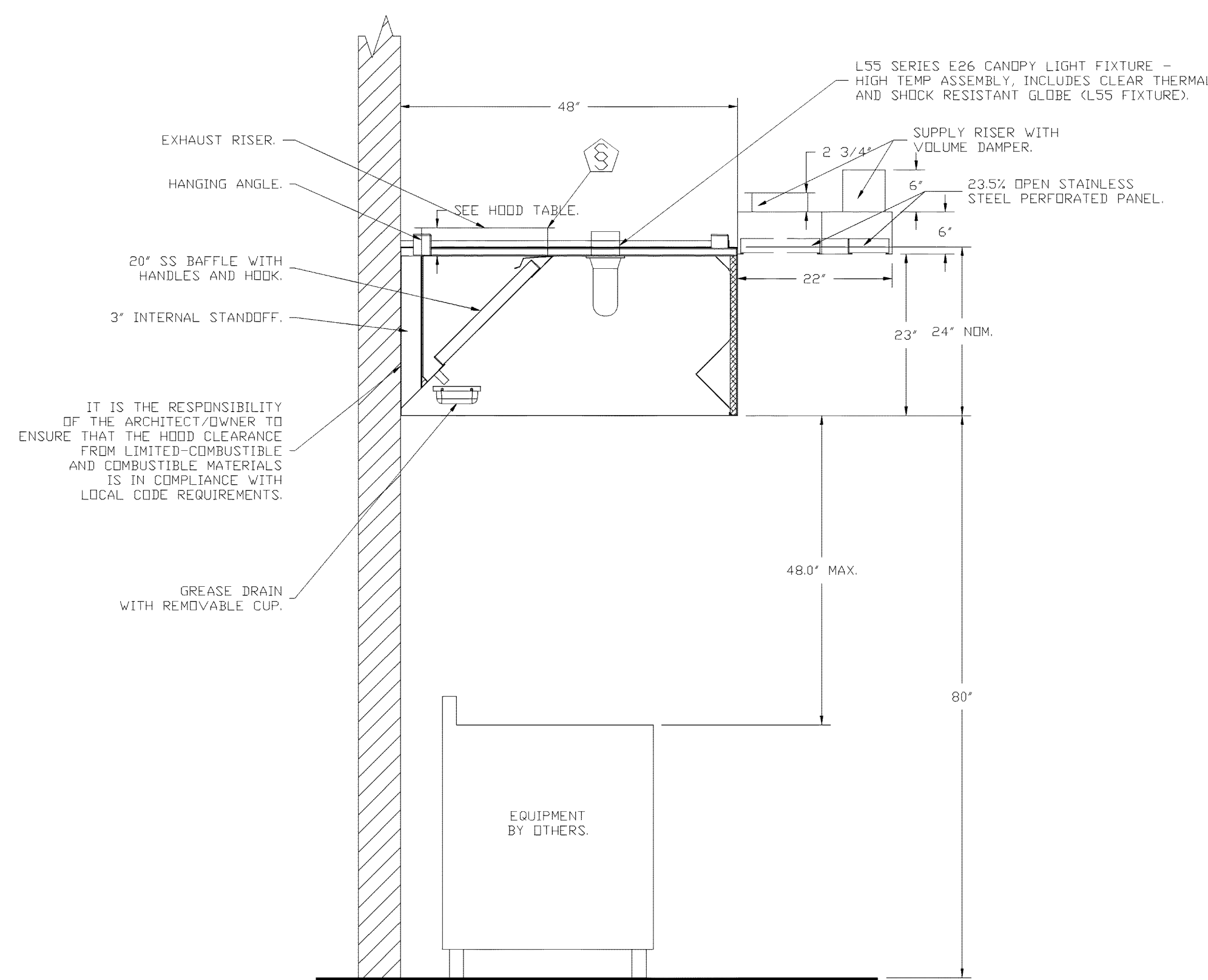


CAPTIVE-AIRE HOODS ARE
BUILT IN COMPLIANCE WITH
UL 710 AND NFPA 96
AND ARE RECOGNIZED BY ONE
OR MORE OF THE FOLLOWING:

ETL SANITATION LISTED

ETL LISTED

FILE# 102900319PRT-001



SECTION VIEW - MODEL 4824ND-2-ACPSP-F
HOOD - #1

NOTE: UNLESS OTHERWISE STATED, PANDA RESTAURANT GROUP SHALL PROVIDE ALL EQUIPMENT ON THE FOLLOWING CAPTIVEAIRE SHEETS, INCLUDING: HODDS, FIRE SYTEM, EXHAUST FANS, SUPPLY FAN, BATHROOM FAN AND ELECTRICAL INTERLOCK PACKAGE.

DOUBLE WALL DUCT BY MECHANICAL.

PLEASE USE CONTACT BELOW FOR PRICING

ANSUL GAS VALVE:

THE ANSUL GAS VALVE IS PROVIDED BY CAPTIVEAIRE SYSTEMS. CONTACT OUR OFFICE WITH THE VALVE SIZE 3 DAYS IN ADVANCE OF WHEN IT IS NEEDED ON SITE.

FOR QUESTIONS CALL THE
CAPTIVEAIRE
SOUTHERN CALIFORNIA OFFICE

3000 BOW AVENUE, SUITE 410
TUSTIN, CA 92780
TEL: 714-957-1500 EMAIL: REG66@CAPTIVEAIRE.COM

REVISIONS	
DESCRIPTION	DATE
△	
△	
△	
△	
△	

PX - 23'6" - ACPSP - HEAT DX - EXTREME COLD - R2

, 0

CAPITVEARE

www.capitveare.com

Southern California Office

DATE: 2/25/2021
DWG.#: 4438143
DRAWN BY: AH-86
SCALE: 3/4" = 1'-0"
MASTER DRAWING
SHEET NO. 2