

PARCEL MAP N° 37-10

IN THE UNINCORPORATED TERRITORY OF
THE COUNTY OF MONO, STATE OF CALIFORNIA,
BEING A DIVISION OF THE SOUTHWEST
QUARTER OF SECTION 31, TOWNSHIP 4 SOUTH,
RANGE 30 EAST, M.D.M. ↵

ONE SHEET ONLY
No. 4886

Filed for record this 11 day
of May, 1972, at
9:30 A.M. in Book 1 of
Parcel Maps at Page 9 at the
request of Gordon C. Holmes.

Ann M. Zehle
County Recorder

This map was prepared by me or under my direction and is based upon a field survey in conformance with the requirements of the "Subdivision Map Act" at the request of Mr. Jack Partridge in March, 1972. I hereby certify that it conforms with the approved tentative map and the conditions of approval thereof; that all provisions of applicable state law and local ordinances have been complied with.

Gordon Holmes

Gordon C. Holmes R.C.E. 10467

I hereby certify that this land division map was approved by the Mono County Planning Commission on the 9th day of May 1972.

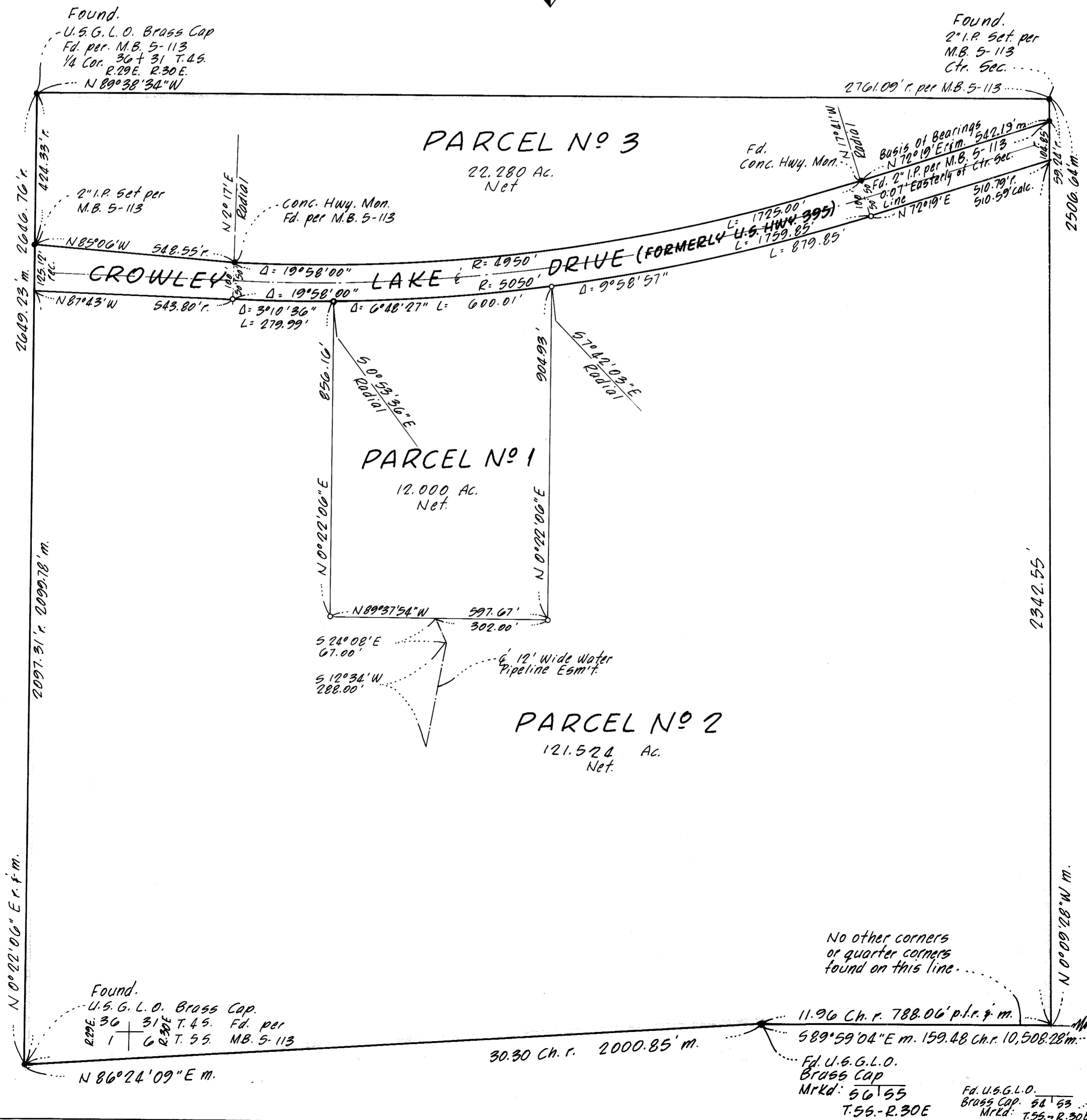
J. E. Bell
Planning Commission Chairman

This map has been examined this 10th day
of May, 1972, for conformance with
the requirements of Section 11575 of the
"Subdivision Map Act"

Richard L. Paul, P.E.
County Surveyor

The record bearing of N 72° 19' 00" E of the north line of Crowley Lake Drive, as measured between the monuments shown, per N.B. 5-113 was used as the basis of bearings shown on this map.

- Indicates a found or record point as noted.
 - Indicates a 1" I.P. & Tag set.
- p.f.r.'m proportioned from record #'s measurements
- Record information shown hereon is from
M.B. 5-113.



No other corners
or quarter corners
found on this line.

19