

RECORD OF SURVEY

FOR FRANK DINAPOLI

BEING A PORTION OF THE TULARCITOS RANCHO
AND LYING WITHIN THE CITY OF MILPITAS
(AMENDS RECORD OF SURVEY RECORDED MAY 19, 1964 IN BK. 178 OF MAPS, PG. 46.)

JENNINGS-McDERMOTT ENGINEERING

601 N. FIRST ST. - SAN JOSE
CALIFORNIA

DATE: MAY 1964

SCALE: 1" = 100'

LEGEND

- = Monument Found
- = Iron Pipe Set

SURVEYOR'S CERTIFICATE

This map correctly represents a survey made by me or under my direction in conformance with the requirements of the Land Surveyor's Act at the request of Frank DiNapoli in May, 1964.

Robert G. McDermott
Licensed Land Surveyor No. 2734

COUNTY SURVEYOR'S CERTIFICATE

This map has been examined for conformance with the requirements of the Land Surveyor's Act this 15th day of July 1964.

James T. Pott, COUNTY
SURVEYOR, SANTA CLARA COUNTY
By Alan J. Larson Deputy

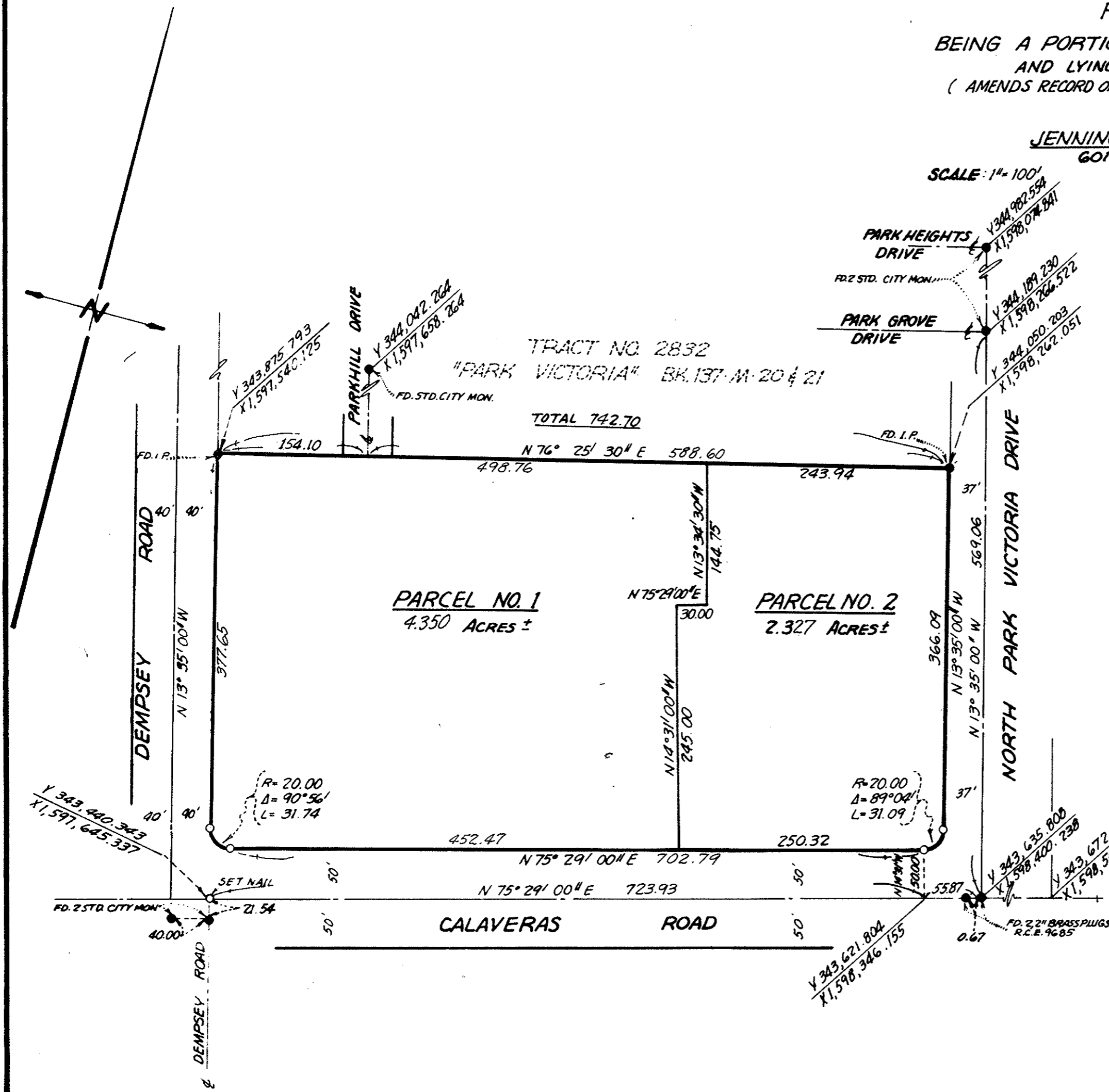
COUNTY RECORDER'S CERTIFICATE

Filed for record this 15th day of July 1964 at 3:22 PM, in Book 182 of Maps at Page 36 at the request of Robert G. McDermott.

#5.00 Paul R. Terlh, COUNTY RECORDER
SANTA CLARA COUNTY, CALIFORNIA
By Donal E. Larson Deputy

BASIS OF BEARINGS

The basis of bearings and coordinates is the California Coordinate System, Zone 3. Multiply ground level distances by 0.9999415 to obtain grid distances. (The centerline of North Park Victoria Drive, N. 13° 35' W, as shown on map of Tract No. 2832, recorded in Book 137 of Maps at pages 20 & 21, Santa Clara County, California Records.)



36

RECORD OF SURVEY

OF H. J. GRIFFITH PROPERTY

BEING A PORTION OF A RECORD OF SURVEY
IN S.W. 1/4 OF SECTION 23, T. 7 S. R. 2 W. M.D.B. & M.
CITY OF CUPERTINO, SANTA CLARA COUNTY

JENNINGS - MC DERMOTT ENGINEERING

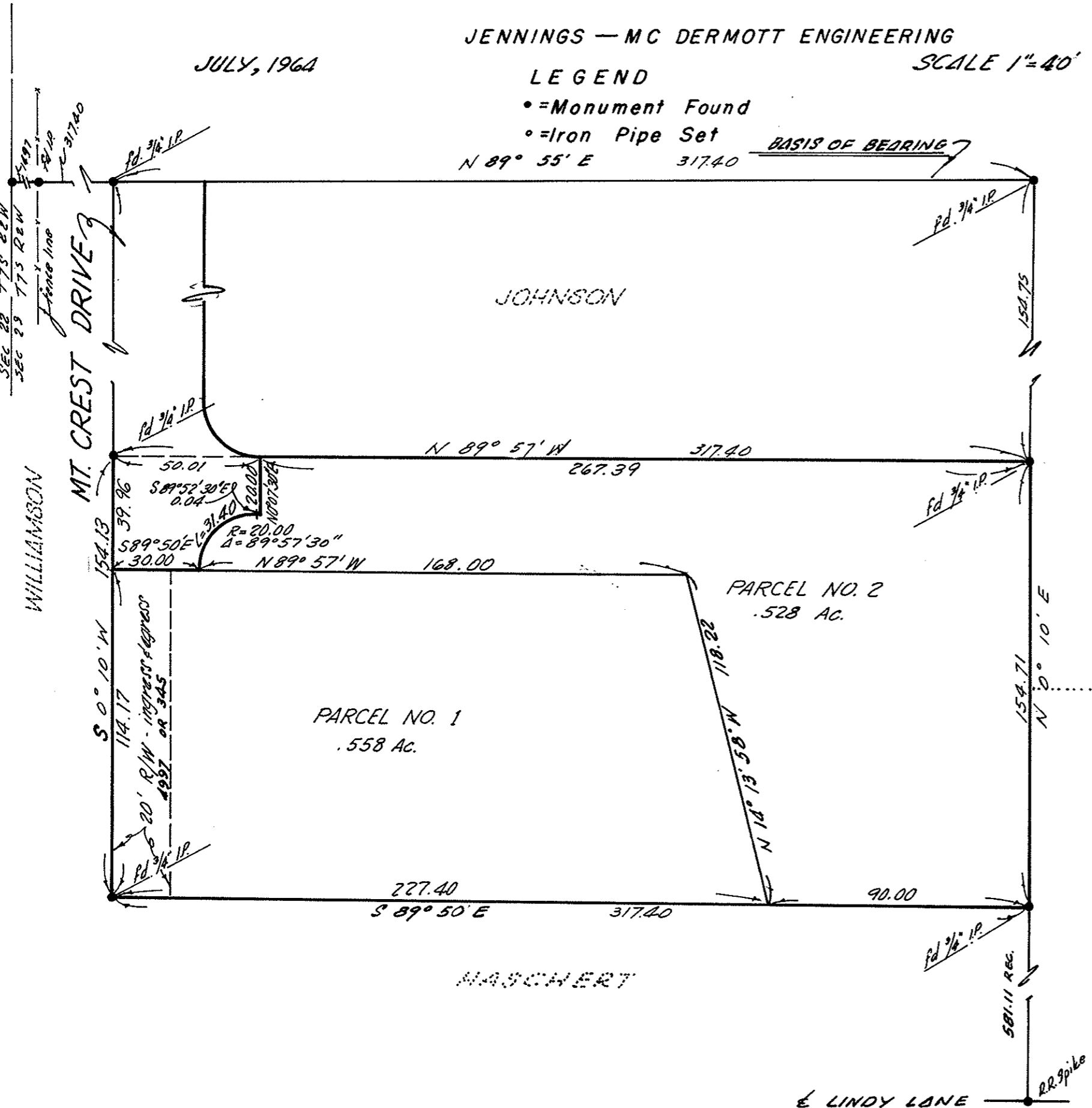
JULY, 1964

LEGEND

- = Monument Found
- = Iron Pipe Set

SCALE 1" = 40'

BASIS OF BEARING



BASIS OF BEARINGS

The bearing (N 89° 55' E) on the Northerly line of that 2250 Acre parcel as shown on Record of Survey Filed for record Dec 31, 1956 in Book 77 of Maps at page 25, Santa Clara County Records was used as basis of bearings hereon.

SURVEYOR'S CERTIFICATE

This map correctly represents a survey made by me or under my direction in conformance with the requirements of The Land Surveyor's Act at the request of H. J. Griffith, July, 1964.

Robert G. McDermott
Licensed Land Surveyor No. 2734

COUNTY SURVEYOR'S CERTIFICATE

This map has been examined for conformance with the requirements of The Land Surveyor's Act, this 15th day of July 1964.

James T. Pott, County
Surveyor, Santa Clara County.
By Alan J. Larson Deputy

COUNTY RECORDER'S CERTIFICATE

2667637

Filed for record this 15th day of July 1964 at 3:22 PM, in Book 182 of Maps at Page 36 at the request of Robert G. McDermott.

#5.00 Paul R. Terlh, County Recorder of
Santa Clara County, California
By Donal E. Larson Deputy

36

182
36

36