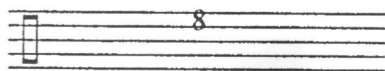


Six time brackets for the "left hand" and eight for the "right." Bracket times are in light face when they overlap adjacent brackets. At such points the performer must find a solution that accomodates one bracket with the other. Either hand may help the other. Numerals on staves are cymbals and/or drums chosen by the drummer. The sounds to be made are either long (a tremolo with individual attacks that are not noticeable) or very short (without resonance, completely stopped). Dynamics are free. Only one sound per bracket.

# ONE<sup>4</sup>

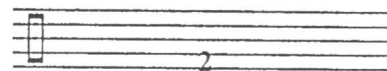
John

0'00" ↔ 1'00"



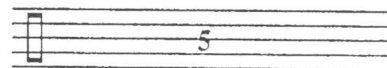
0'40" ↔ 1'40"

0'00" ↔ 0'15"



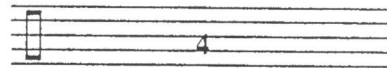
0'10" ↔ 0'25"

0'15" ↔ 0'45"



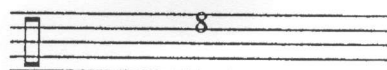
0'35" ↔ 1'05"

1'00" ↔ 1'15"



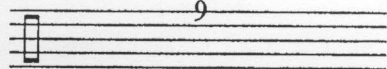
1'10" ↔ 1'25"

1'20" ↔ 1'35"



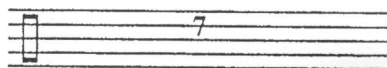
1'30" ↔ 1'45"

1'25" ↔ 2'05"



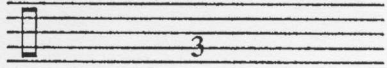
1'50" ↔ 2'35"

1'35" ↔ 2'05"



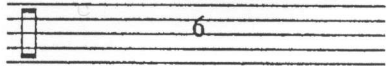
1'55" ↔ 2'25"

2'20" ↔ 3'05"



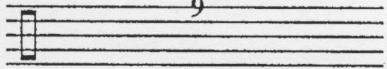
2'50" ↔ 3'35"

2'05" ↔ 3'05"



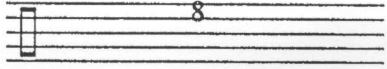
2'45" ↔ 3'45"

3'20" ↔ 4'05"



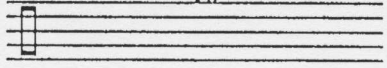
3'50" ↔ 4'35"

3'20" ↔ 4'35"



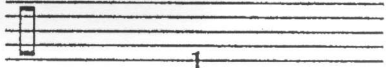
4'10" ↔ 5'25"

4'10" ↔ 5'25"



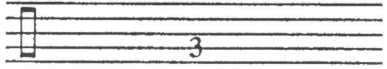
5'00" ↔ 6'15"

5'10" ↔ 5'55"



5'40" ↔ 6'55"

6'05" ↔ 6'35"



6'25" ↔ 6'55"