

DESCRIPTION
DATE
REV

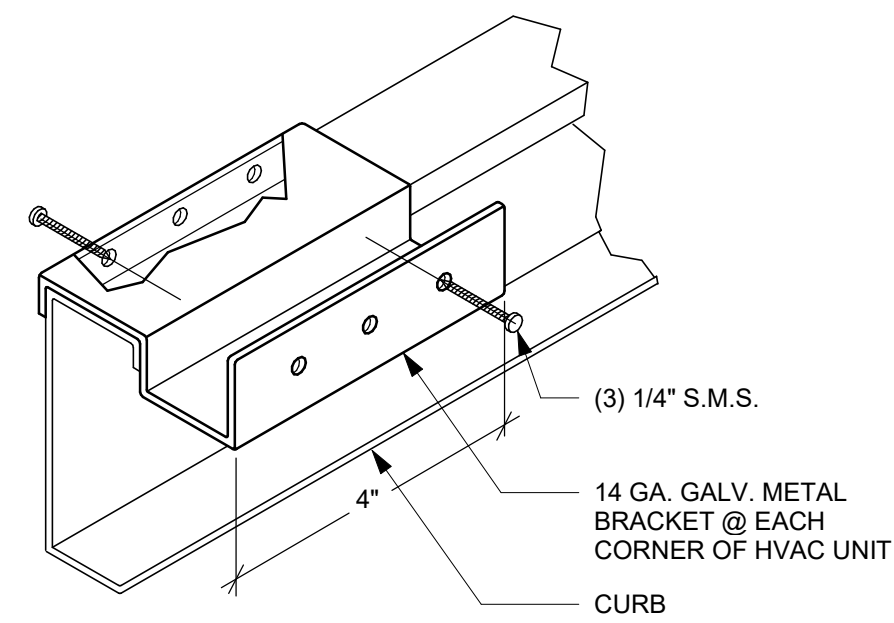
WHITSETT
6405 BURLINGTON RD
WHITSETT, NC 27377

BUILDING DETAILS (ROOF)

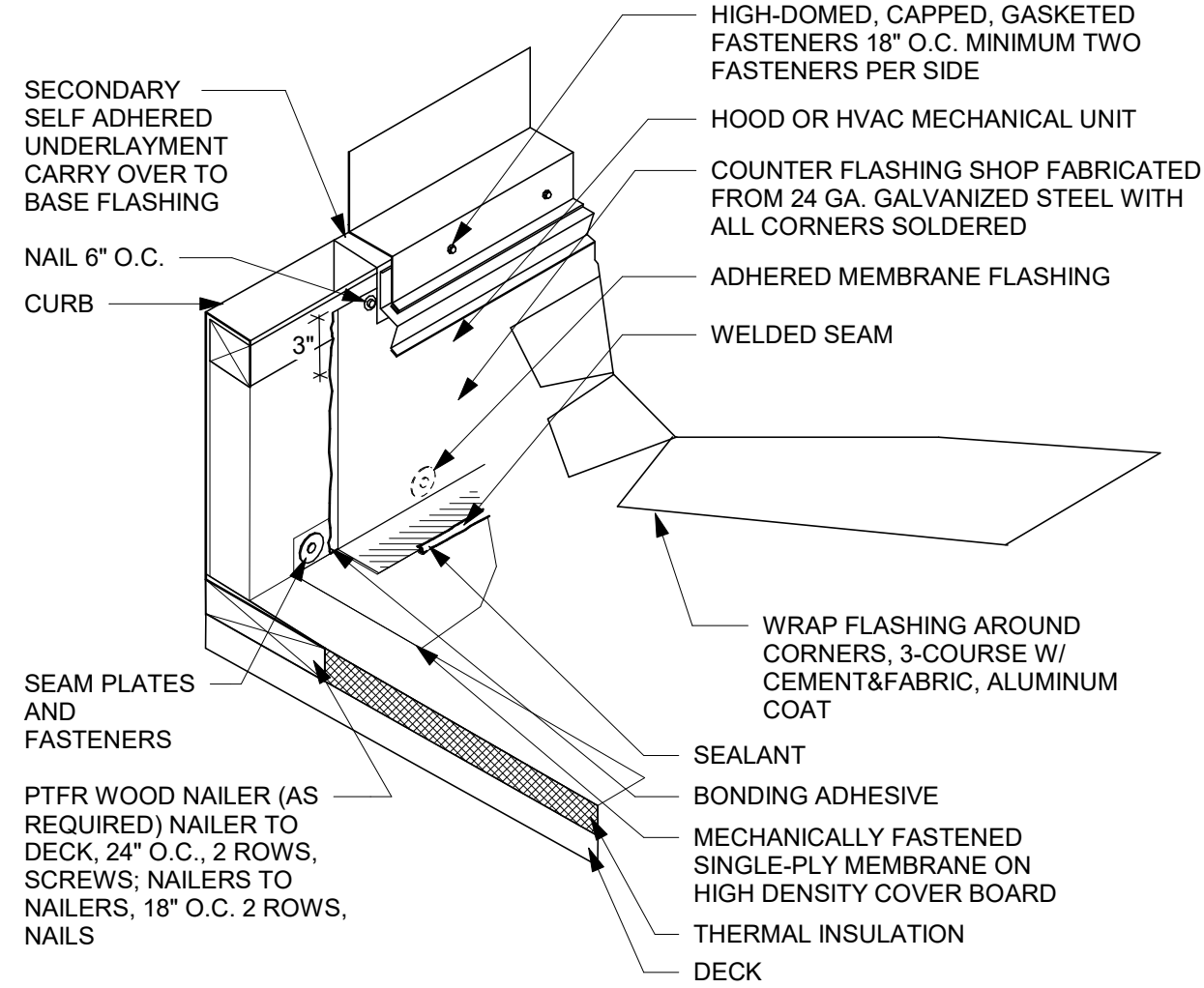
PERMIT	DATE
BID	---
CONSTRUCTION	---
RECORD	---
PROJECT MANAGER	DESIGNER
AK	DB

JOB NO.
2020379.16

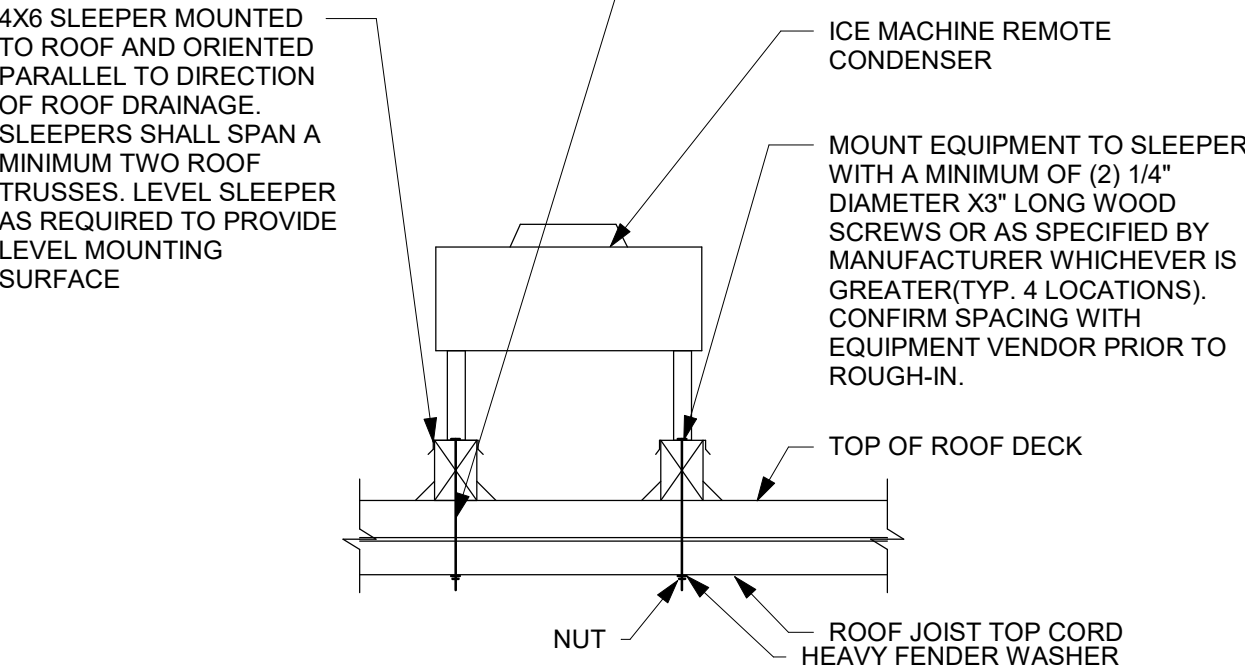
A5003



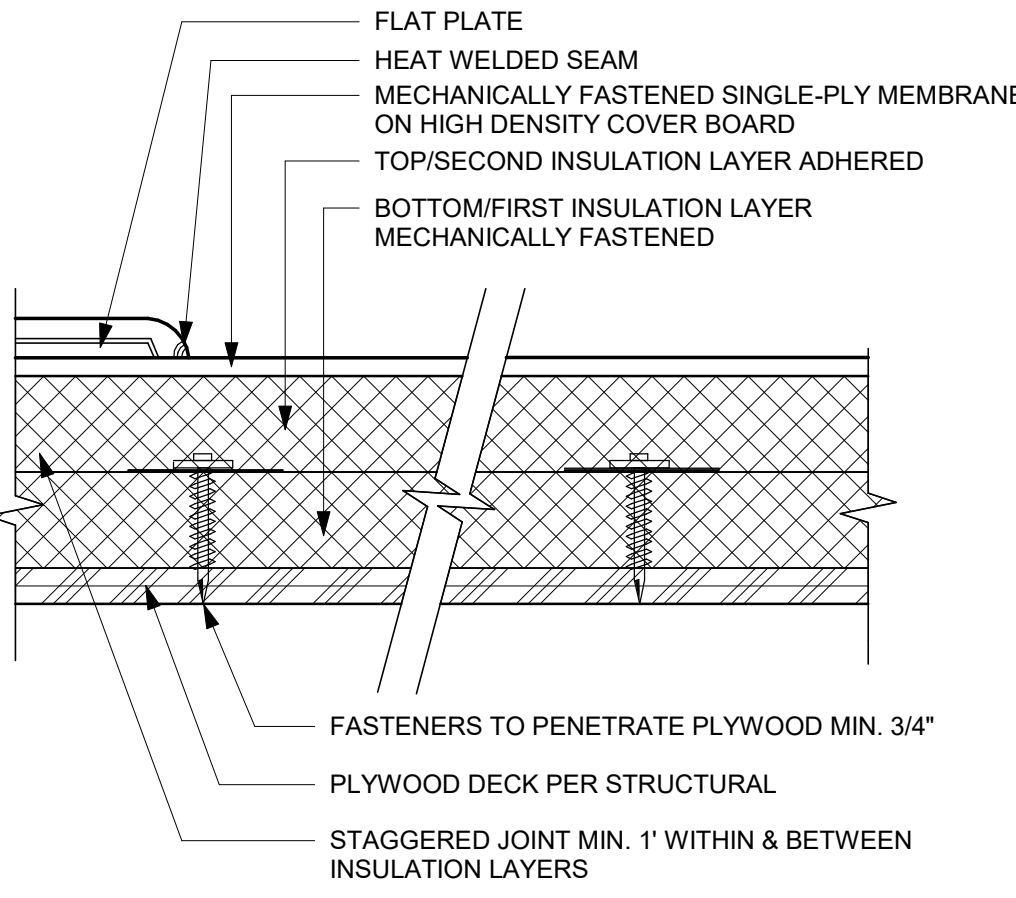
14 SEISMIC RESTRAINT BRACKET
Scale: 3" = 1'-0"



11 HVAC CURB FLASHING
Scale: 1 1/2" = 1'-0"

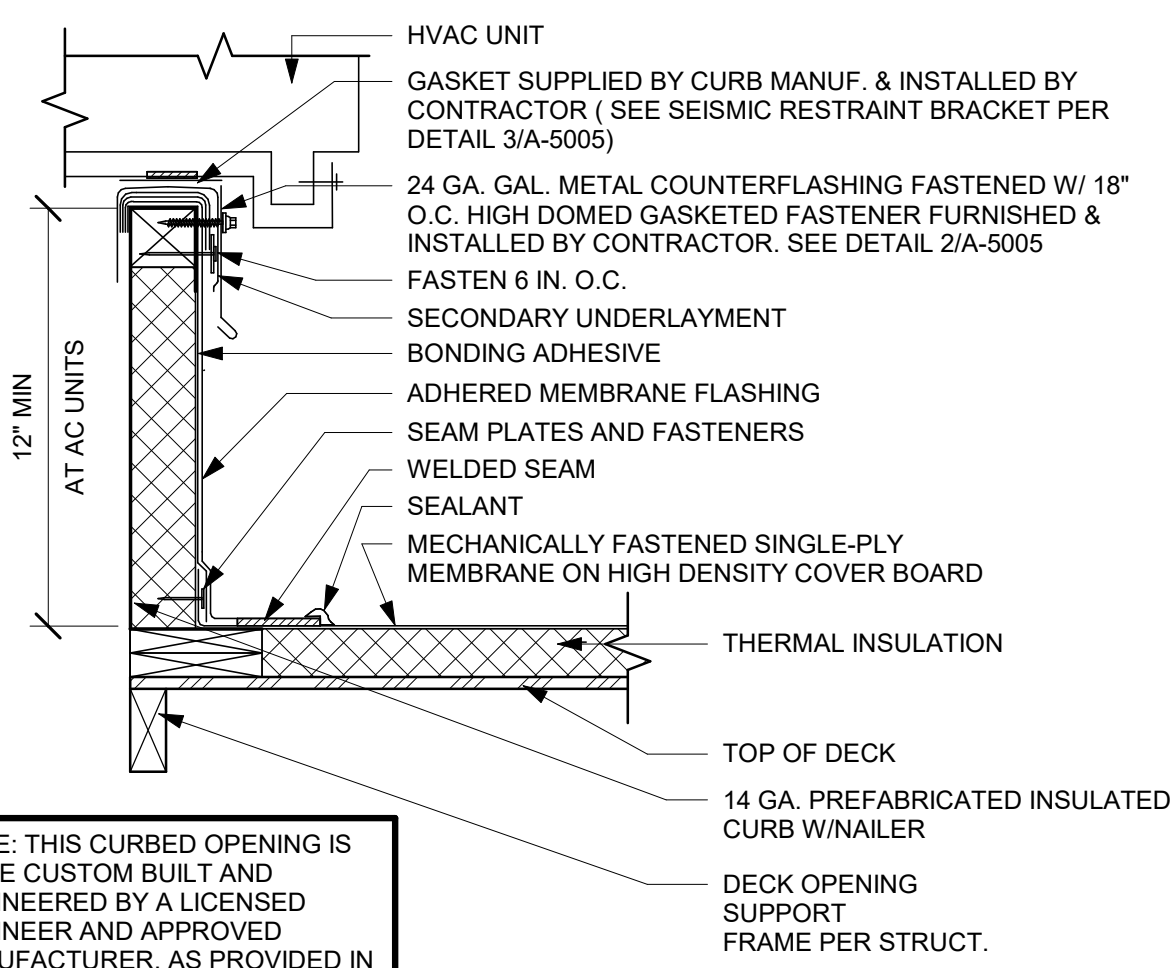


7 EQUIPMENT SUPPORT DETAIL
Scale: NTS



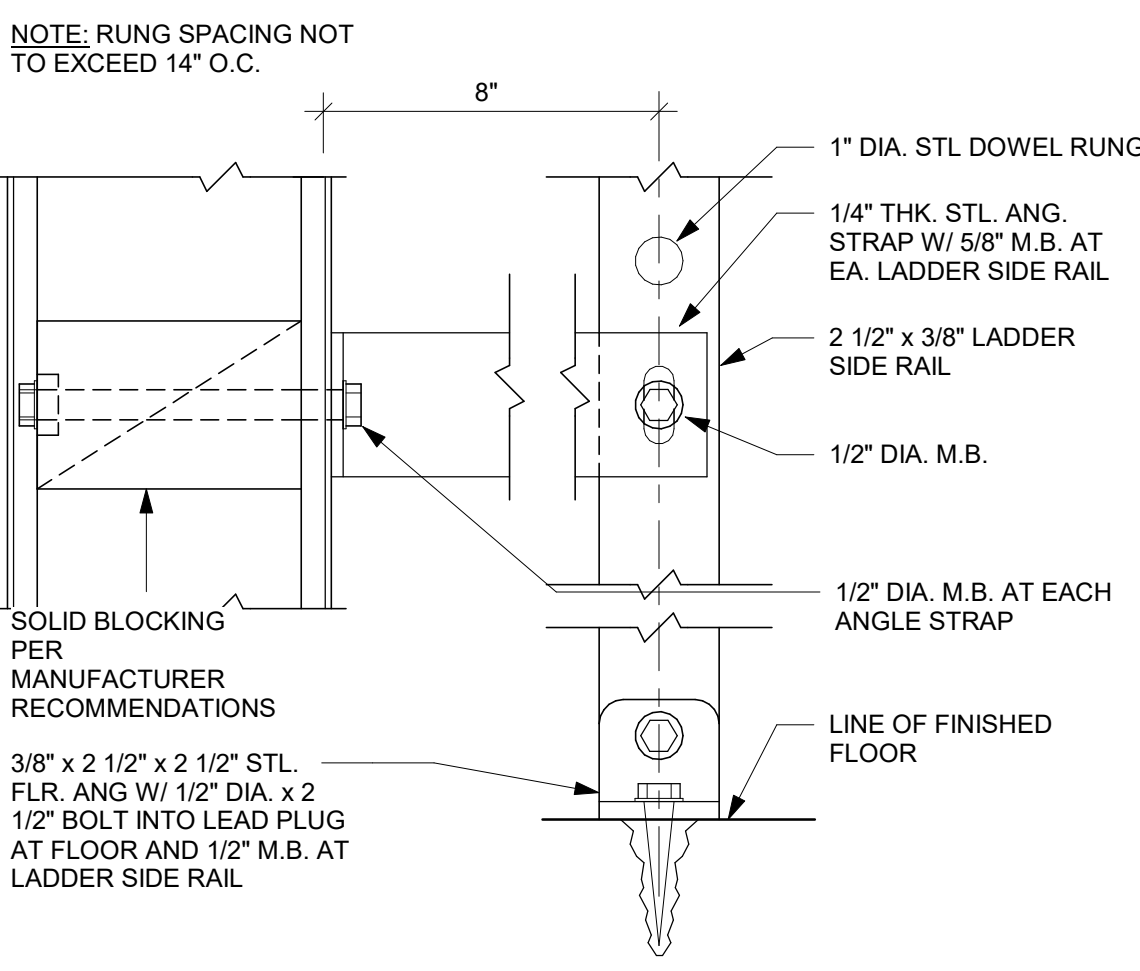
NOTE: 1. SEE SPECIFICATIONS FOR ADDITIONAL INFORMATION.
2. ROOFING SYSTEM TO BE CLASS "C" MIN.

4 ROOF SYSTEM ASSEMBLY
Scale: 3" = 1'-0"

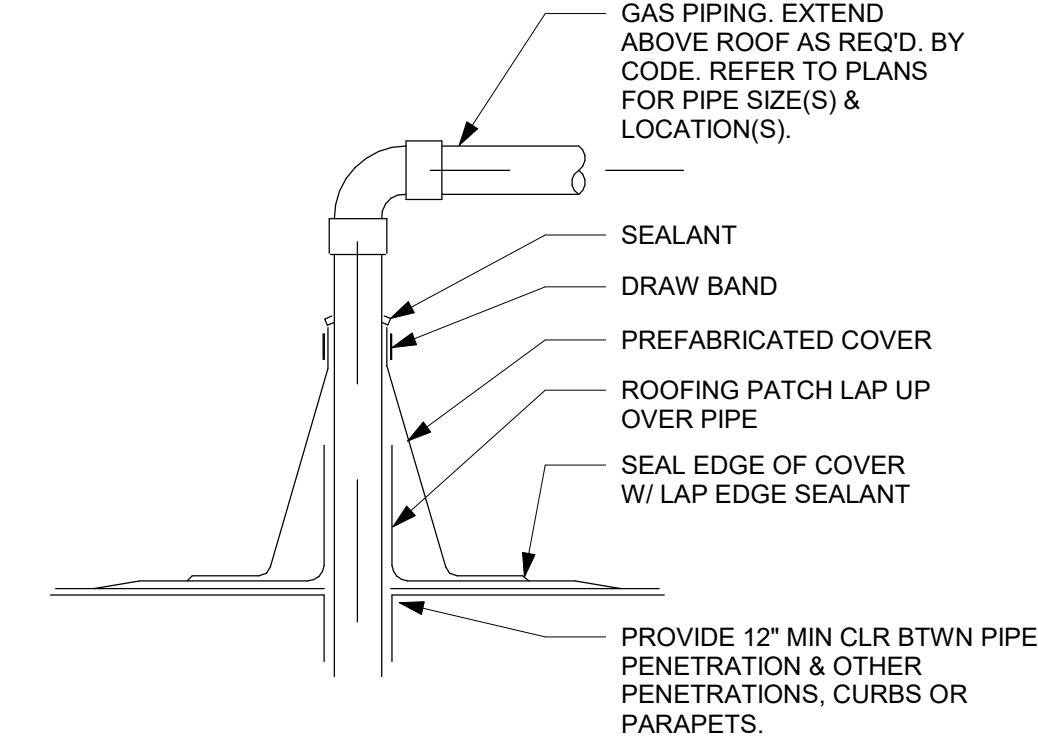


NOTE: THIS CURBED OPENING IS TO BE CUSTOM BUILT AND ENGINEERED BY A LICENSED ENGINEER AND APPROVED MANUFACTURER, AS PROVIDED IN SPECIFICATIONS TO SUPPORT WEIGHT OF HVAC UNIT

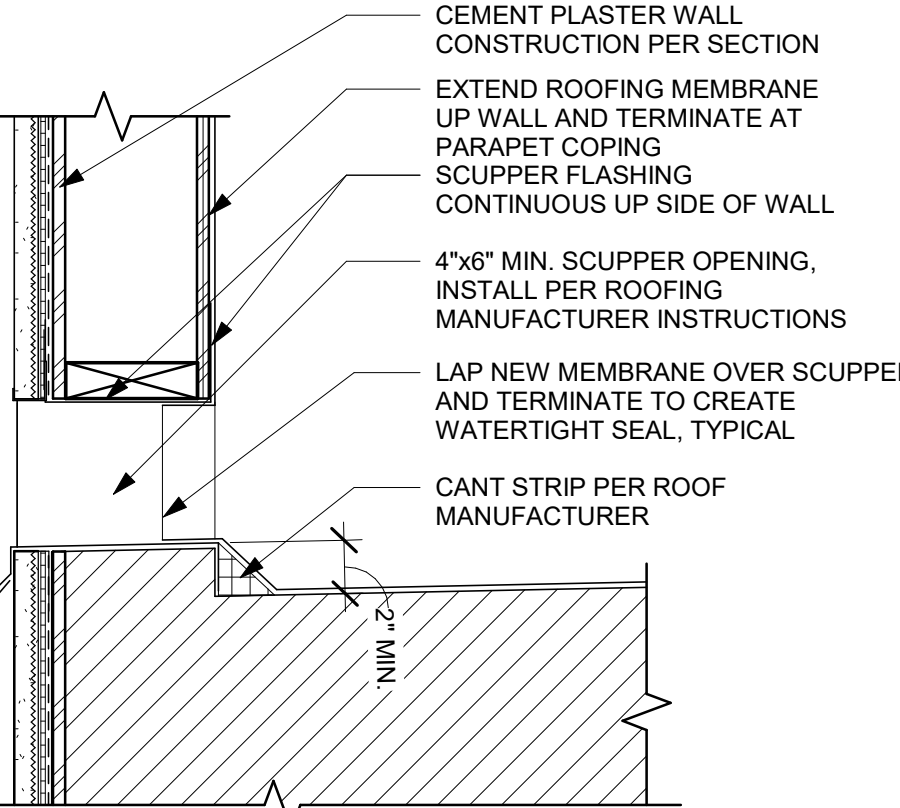
13 HVAC UNIT CURB
Scale: 1 1/2" = 1'-0"



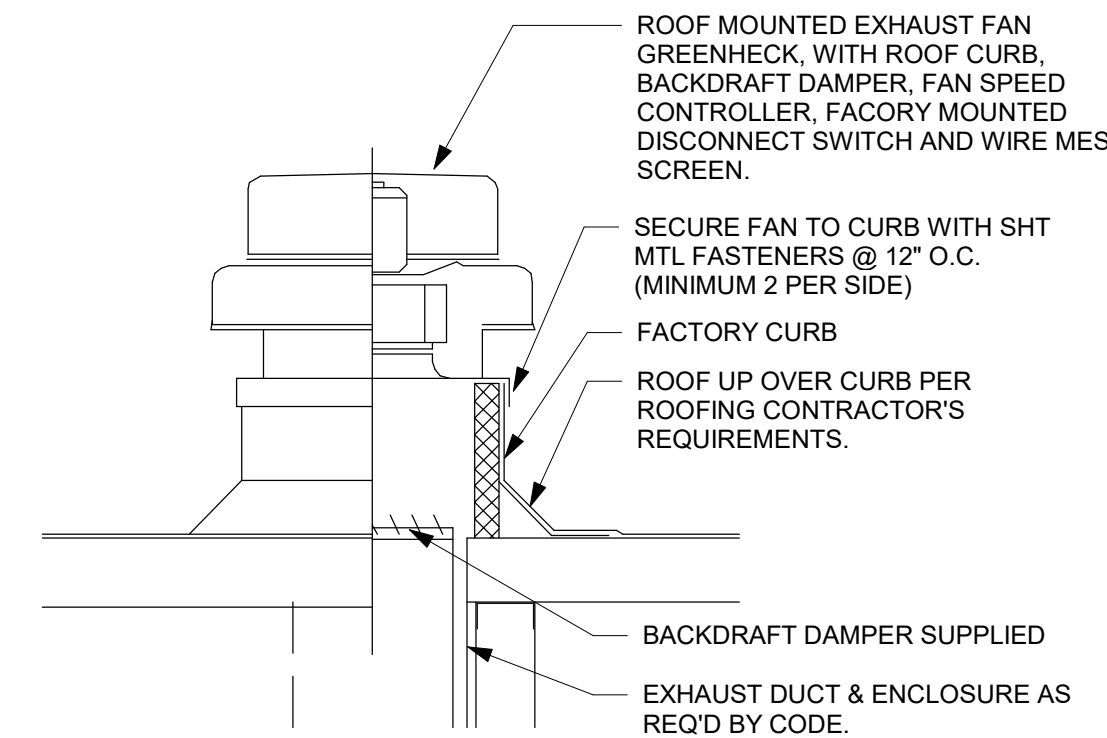
10 LADDER DETAIL
Scale: 3" = 1'-0"



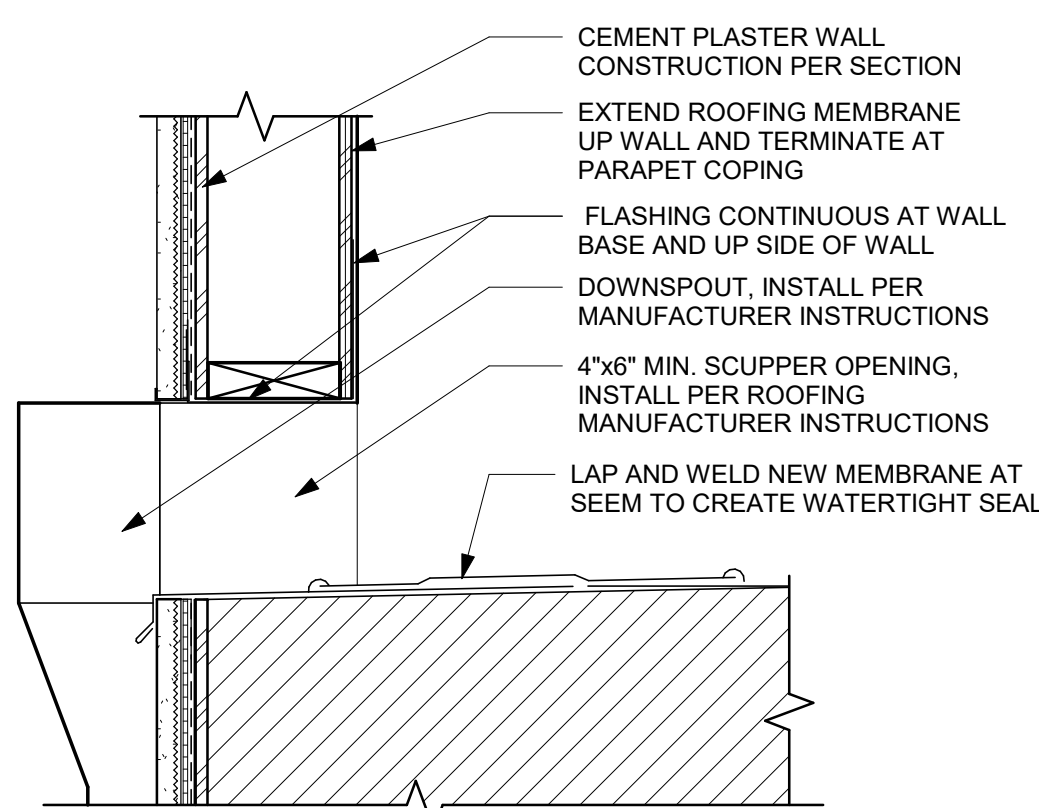
6 PIPE/ROOF PENETRATION DETAIL
Scale: 12" = 1'-0"



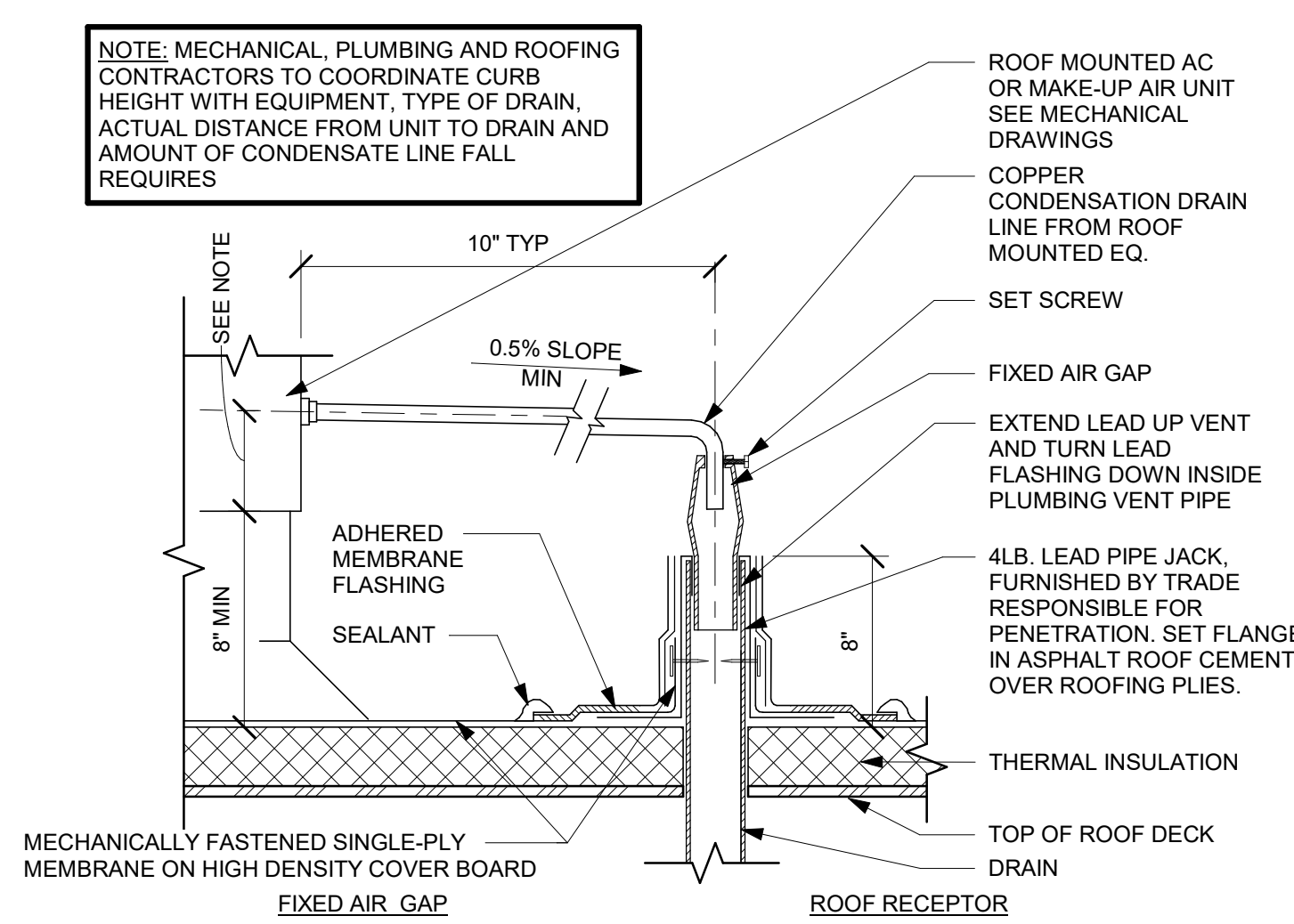
3 OVERFLOW SCUPPER DETAIL
Scale: 1 1/2" = 1'-0"



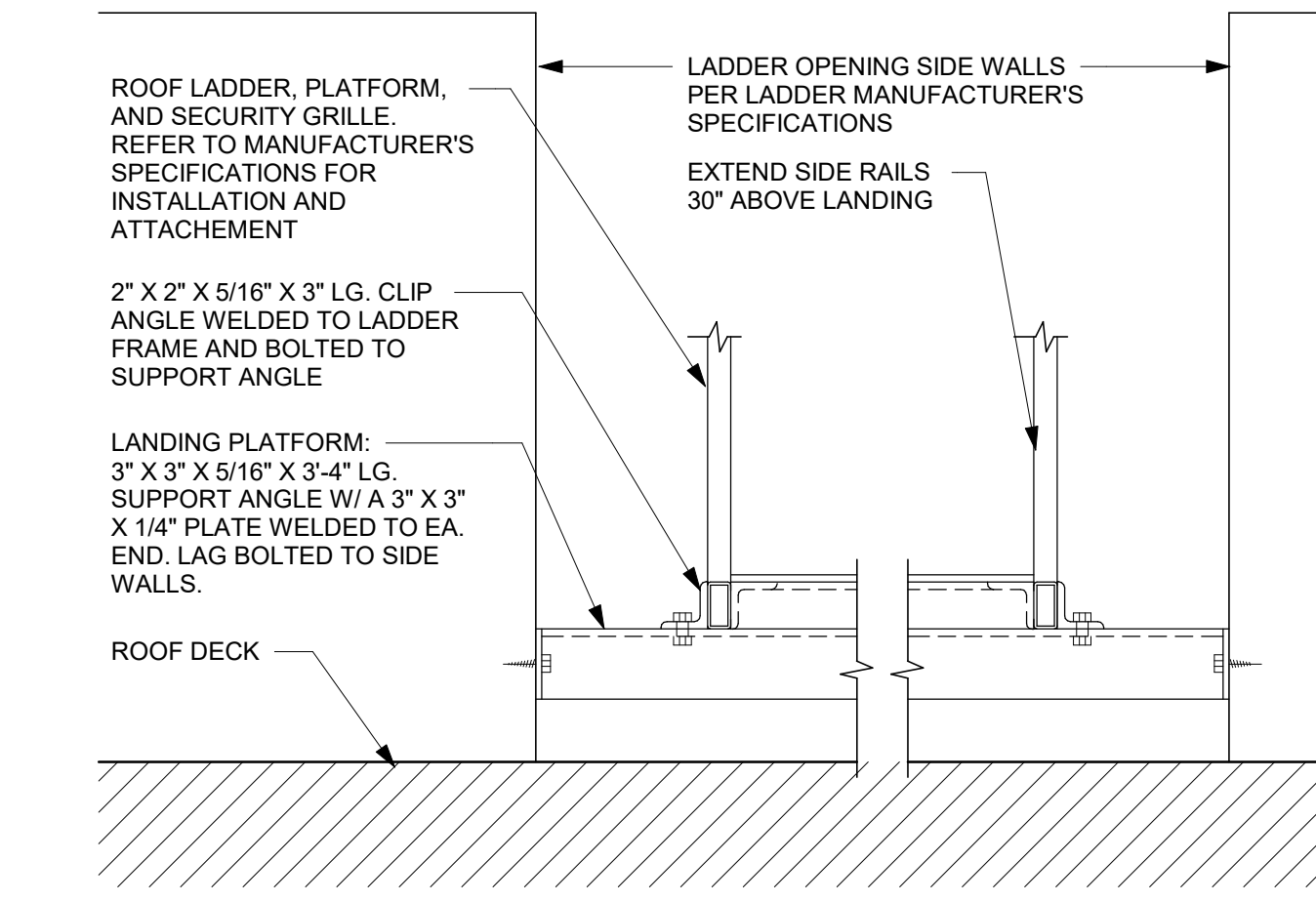
5 ROOF EXHAUST FAN
Scale: 12" = 1'-0"



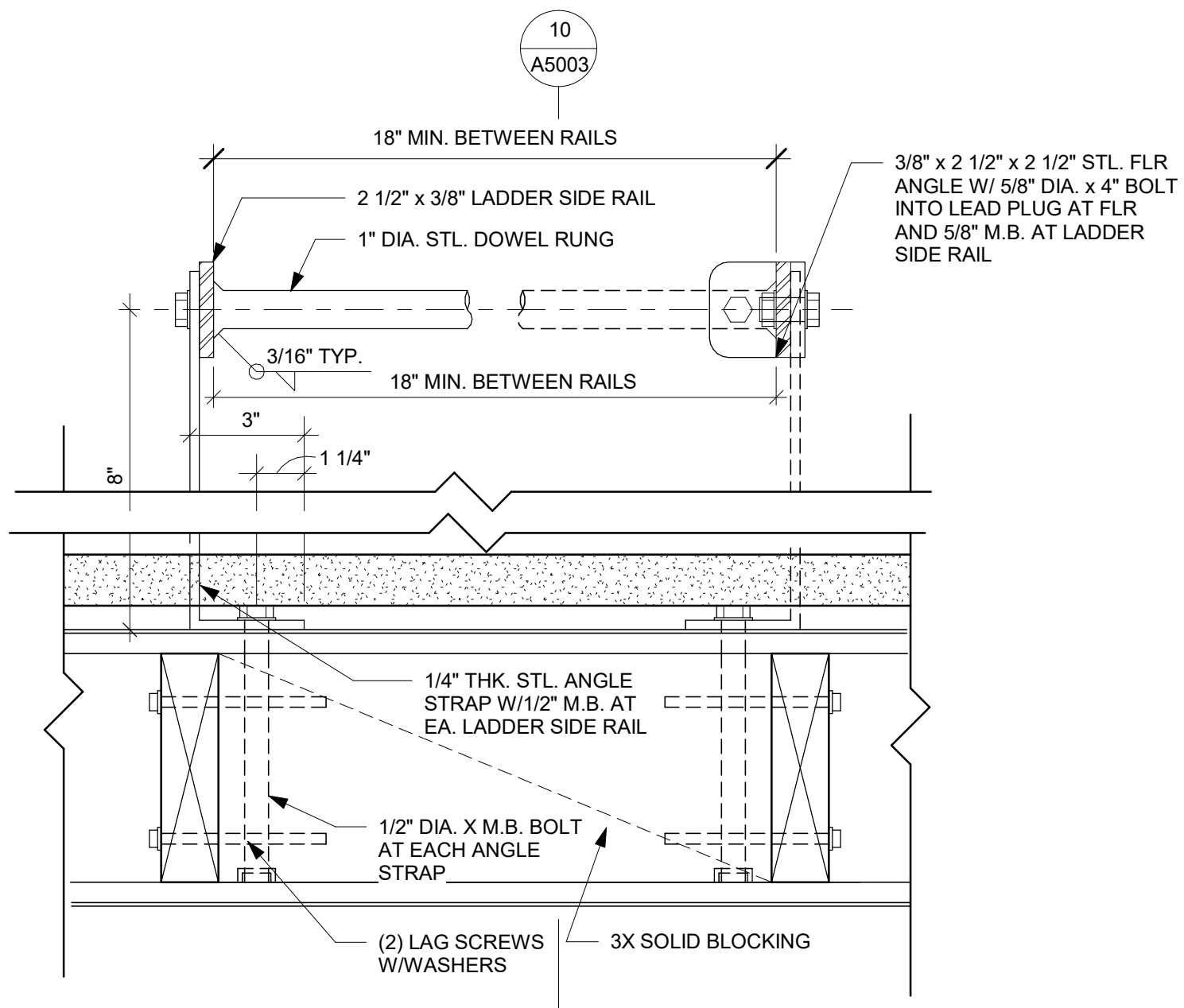
2 SCUPPER / DOWNSPOUT DETAIL
Scale: 1 1/2" = 1'-0"



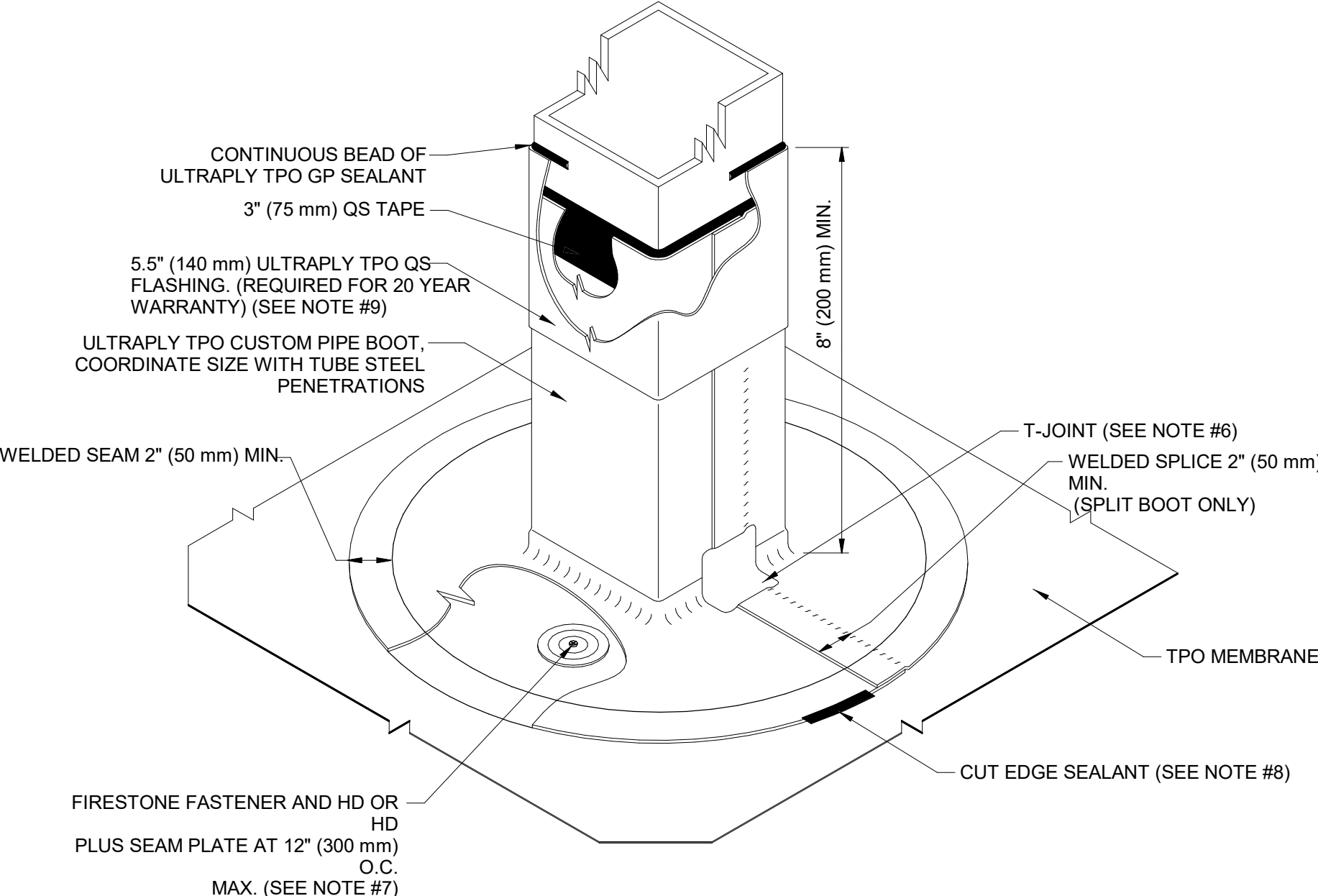
12 HVAC CONDENSATE DRAIN
Scale: 1 1/2" = 1'-0"



9 ROOF LADDER ELEVATION
Scale: 1" = 1'-0"



8 LADDER PLAN DETAIL
Scale: 3" = 1'-0"



NOTES *IF FIRESTONE TPO IS NOT SELECTED, USE DETAIL FROM TPO MANUFACTURER*
1. REFER TO FIRESTONE WEBSITE FOR THE MOST CURRENT INFORMATION.
2. REMOVE ALL EXISTING FLASHING, LEAD, ETC. PIPE SURFACE MUST BE FREE OF ALL RUST, GREASE, INSULATION, ETC.
3. PIPE MUST BE ANCHORED TO ENSURE
4. 3" (75 mm) QS TAPE MUST BE INSTALLED WITH ULTRAPLY TPO QUICKPRIME.
5. DO NOT USE WHEN SERVICE LINE TEMP. EXCEEDS 180°F. REFER TO UT-P-6 & UT-P-7.
6. T-JOINT PATCH REQUIRED AT ALL VERTICAL TRANSITIONS ON NON-FACTORY WELDS
7. FIRESTONE FASTENER AND HD SEAM PLATE REQUIRE FOR MAS ONLY. IF FASTENER CANNOT BE INSTALLED AS ILLUSTRATED, CONTACT ROOFING MANUFACTURER.
8. CUT EDGE SEALANT SHALL BE APPLIED TO ANY EDGES WHERE SCRIM REINFORCEMENTS IS EXPOSED PER DETAIL UT-LS-14.
9. FOR 20 YEAR WARRANTY, TOP TERMINATION OF SQUARE PIPE BOOT MUST BE FLASHED WITH 5.5" (140 mm) ULTRAPLY TPO QS FLASHING OVER THE 3" (75 mm) QS TAPE.

1 SQUARE PENETRATION WITH SQUARE TPO PIPE BOOT DETAIL
Scale: 1 1/2" = 1'-0"