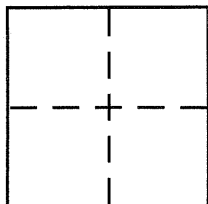


CORNER RECORD

BK25 Pg. 16
Document Number **CR 2850**

City of Albany County of Alameda, California

Brief Legal Description Lot 47, Block 7, Map of Key Route Terrace No. 2 (21M.52)



CORNER TYPE

Government Corner ☐ Control ☐
Meander ☐ Property ☒
Rancho ☐ Other ☐
Date of Survey _____

COORDINATES (Optional)

N. _____
E. _____
Zone _____ NAD27 ☐ NAD83 ☐
NAD83 Epoch _____
Elev. _____
Vert. Datum: NGVD29 ☐ NAVD88 ☐
Meas. Units: Metric ☐ Imperial ☐

Corner - Left as found ☐ Found and tagged ☐ Established ☐ Reestablished ☒ Rebuilt ☐

Identification and type of corner found: Evidence used to identify or procedure used to establish or reestablish the corner:

① Found Brass Disc with punch - City of Albany Monument as shown on City of Albany Monument Map on file at City of Albany.

A description of the physical condition of the monument as found and as set or reset:

○ Set rebar & cap, L.S. 7170

SURVEYOR'S STATEMENT

This Corner Record was prepared by me or under my direction in conformance with

the Land Surveyor's Act on October 13th, 2006

Signed Michael J. Foster (P.L.S. or R.C.E. No. P.L.S. 7170)

COUNTY SURVEYOR'S STATEMENT

This Corner Record was received

10-18-2006

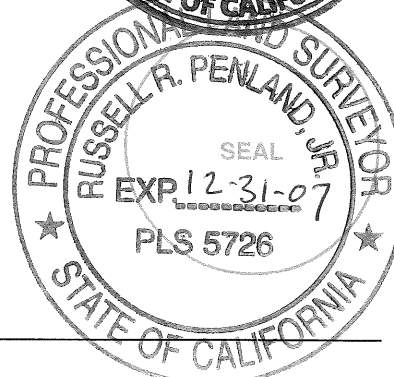
and examined and filed

11-27-2006

Signed Russell R. Penland, Jr. P.L.S. or R.C.E. No. 5726

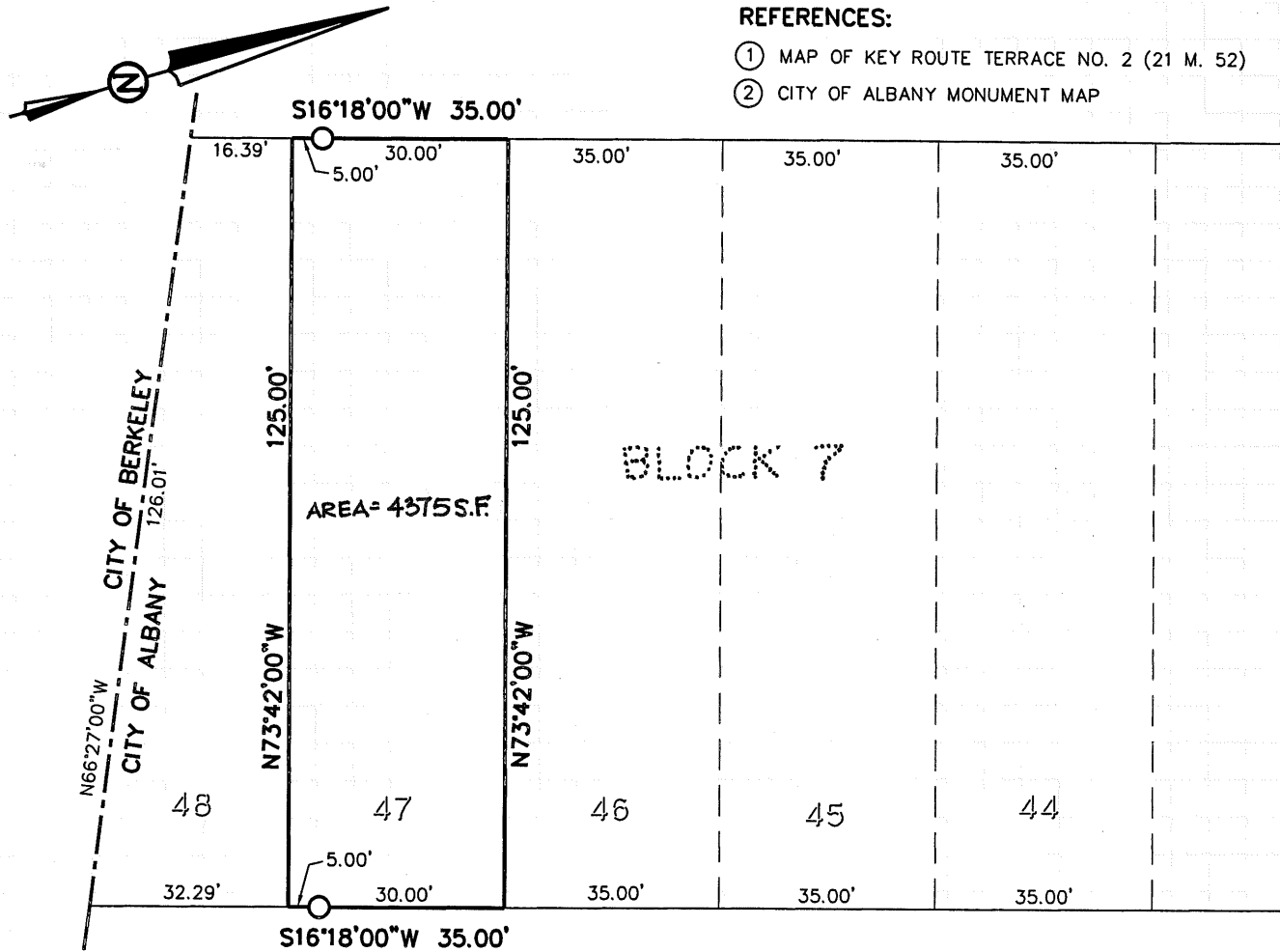
Title COUNTY SURVEYOR

County Surveyor's Comment _____



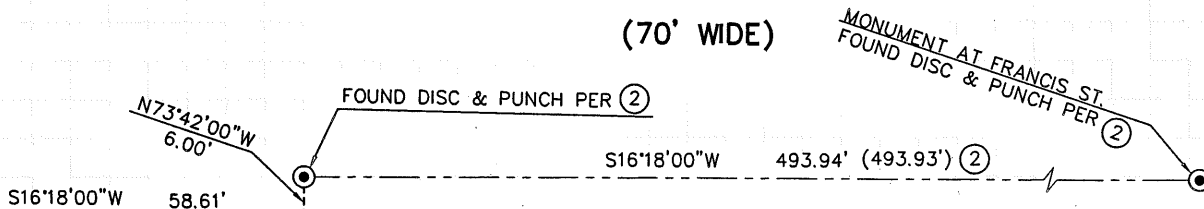
REFERENCES:

- ① MAP OF KEY ROUTE TERRACE NO. 2 (21 M. 52)
- ② CITY OF ALBANY MONUMENT MAP



PERALTA AVENUE

(70' WIDE)



CORNER RECORD

LOT 47, BLOCK 7,
 MAP OF KEY ROUTE TERRACE NO. 2 (21 M. 52)
 ALBANY, ALAMEDA COUNTY, CALIFORNIA
 OCTOBER, 2006 SCALE 1" = 30'

BAY AREA LAND SURVEYING INC.

1828 BONITA ROAD
 RICHMOND, CA 94806
 (510) 232-3095

APN 190-009-01-001 SHT. 1 OF 1 F.B #028 \BPLAT261 JOB NO. 00-261