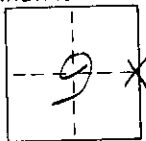


CORNER RECORD

COUNTY OF INYO Moro T. 1 S R. 28 E MOB MERIDIAN CALIFORNIA
 CORNER TYPE: GOV'T. CORNER ☒ MEANDER ☐ RANCHO ☐ CONTROL ☐ OTHER ☐
 CORNER IDENTIFICATION - DATE OF VISIT Dec 7, 1976



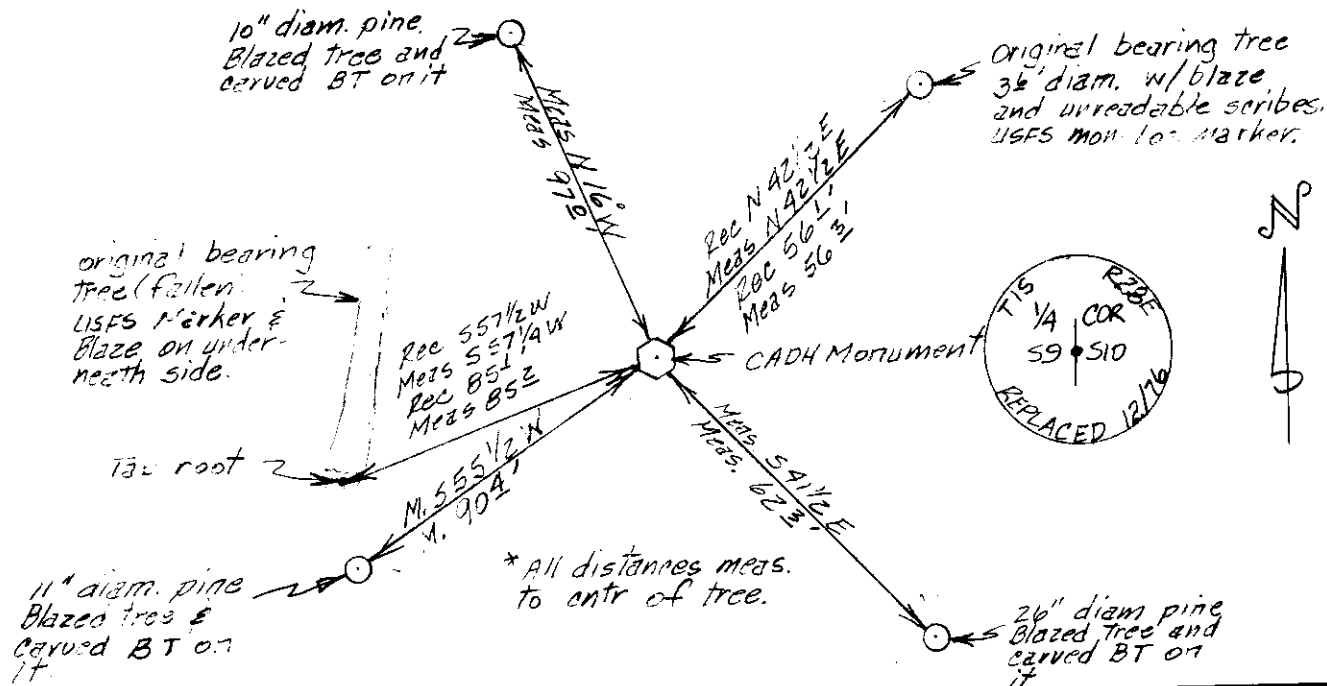
CORNER - LEFT AS FOUND ☐ FOUND AND TAGGED ☐ REESTABLISHED OBLITERATED CORNER ☐ REBUILT ☒ Replaced

PHYSICAL DESCRIPTION OF CORNER FOUND: EVIDENCE AND METHOD USED TO IDENTIFY OR REESTABLISH Fd 3 1/2" diam. pine tree (standing) w/USFS monument location marker and blaze w/unreadable scribes. Fd. fallen 2 1/2" diam. pine tree w/USFS monument location marker on underneath side of tree and blaze beneath marker. Used tap root of fallen tree as second tie to 14 cor. See sketch below.

PHYSICAL DESCRIPTION OF MONUMENTS REBUILT OR PERPETUATED Set 2 1/2" brass cap brazed to a 2 1/2" OD pipe, 4 ft 0", w/6' metal witness post painted white and 3' East of monument. See sketch for stamping of CADH brass cap.

CALIFORNIA COORDINATE SYSTEM ORDER: FIRST ☐ SECOND ☐ THIRD ☐
 STATIONS USED: NGS (USC & GS) ☐ STATE ☐ COUNTY ☐ OTHER ☐ STATION _____ STATION _____
 ZONE 3 ELEVATION _____ NORTHINGS (Y) _____ EASTINGS (X) _____

SKETCH: (Include reference tie or witness points, remarks and topo of area)



SURVEYOR'S CERTIFICATE

THIS CORNER RECORD WAS PREPARED BY ME OR UNDER MY DIRECTION IN CONFORMANCE WITH THE LAND SURVEYORS ACT ON December 9, 1976

SIGNED: Robert A. Suris
Party Chief

L.S. or R.C.E. No.:

SEAL

COUNTY SURVEYOR'S CERTIFICATE

THIS CORNER RECORD WAS RECEIVED Jan 25, 1977
 AND EXAMINED AND FILED Jan 26, 1977

BY: _____
 TITLE: _____

DOCUMENT No. 528-9-2

STATEMENT ON BACK OF SHEET

YES ☐ NO ☐