

BEING A SURVEY OF LOT LINE ADJUSTMENT NO. 92-06 BETWEEN LOTS 117 AND 118 OF THE MAMMOTH KNOLLS PER MAP RECORDED IN MAP BOOK 6 AT PAGE 84 IN THE OFFICE OF THE MONO COUNTY RECORDER, MONO COUNTY, CALIFORNIA. BEING LOCATED IN A PORTION OF THE SW 1/4 OF SEC. 27, T.3S., R.27E., M.D.B.& M. IN THE TOWN OF MAMMOTH LAKES.

THIS MAP CORRECTLY REPRESENTS A SURVEY MADE
BY ME OR UNDER MY DIRECTION IN CONFORMANCE
WITH THE REQUIREMENTS OF THE LAND SURVEYORS'
ACT AT THE REQUEST OF THE TOWN OF MAMMOTH
LAKES IN DECEMBER, 1992.

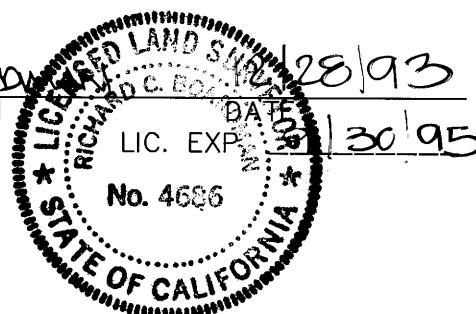
DAVID LAVERTY
L.S. 4587

DATE
LIC. EXP. 9-30-94

THIS MAP HAS BEEN EXAMINED IN ACCORDANCE WITH
SECTION 8766 OF THE LAND SURVEYORS' ACT THIS
28th DAY OF DECEMBER 1993.

COUNTY SURVEYOR

RICHARD BOARDMAN
L.S. 4686

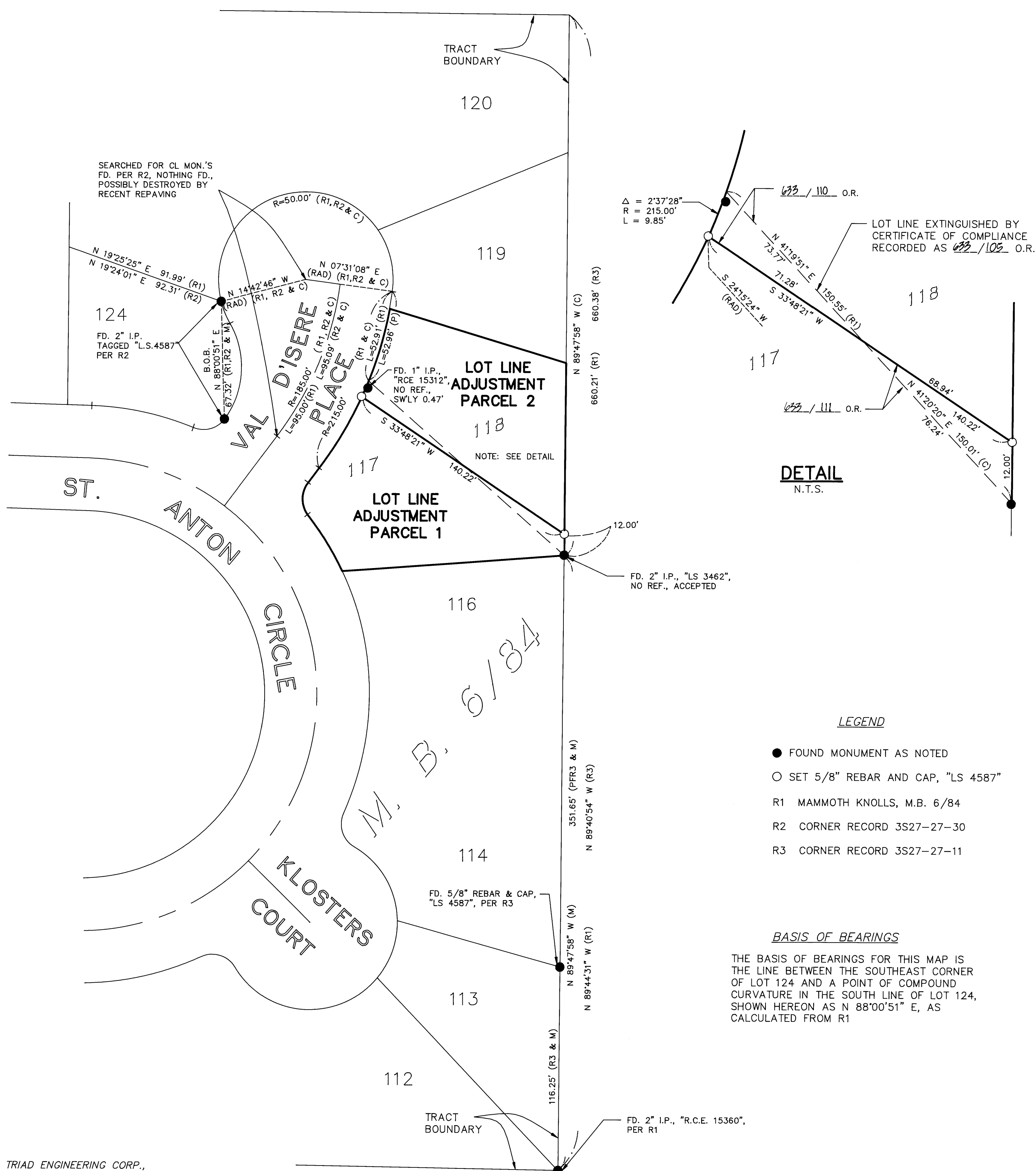


FILED THIS 29th DAY OF December 1993,
AT 9:42 A.M. IN BOOK 2 OF RECORD OF
SURVEY MAPS AT PAGE 147 AT THE REQUEST
OF THE TOWN OF MAMMOTH LAKES.

INSTRUMENT NO. : # 8890
FEE : NO-Fee

RENN NOLAN
MONO COUNTY RECORDER

BY : Kera M. Mills
DEPUTY COUNTY RECORDER



LEGEND

- FOUND MONUMENT AS NOTED
- SET 5/8" REBAR AND CAP, "LS 4587"
- R1 MAMMOTH KNOLLS, M.B. 6/84
- R2 CORNER RECORD 3S27-27-30
- R3 CORNER RECORD 3S27-27-11

BASIS OF BEARINGS

THE BASIS OF BEARINGS FOR THIS MAP IS
THE LINE BETWEEN THE SOUTHEAST CORNER
OF LOT 124 AND A POINT OF COMPOUND
CURVATURE IN THE SOUTH LINE OF LOT 124,
SHOWN HEREON AS N 88°00'51" E, AS
CALCULATED FROM R1