

CORNER RECORD

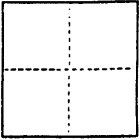
CR200

A PORTION OF THE VINCENTE AND DOMINGO PERALTA RANCHO

COUNTY OF Alameda T. _____ R. _____ MERIDIAN _____ CALIFORNIA

CORNER TYPE: GOV'T. CORNER ☐ MEANDER ☐ RANCHO ☐ CONTROL ☐ OTHER ☒ Boundary Survey

CORNER IDENTIFICATION — DATE OF VISIT 1/15 19 92



CORNER — LEFT AS FOUND ☐ FOUND AND TAGGED ☐ REESTABLISHED OBLITERATED CORNER ☐ REBUILT ☐

PHYSICAL DESCRIPTION OF CORNER FOUND; EVIDENCE AND METHOD USED TO IDENTIFY OR REESTABLISH

Found standard street monuments in "North Hill Court" per 44 M 52 (Tract 2085)

PHYSICAL DESCRIPTION OF MONUMENTS REBUILT OR PERPETUATED

Set 5/8" rebar and cap RCE 29123 at SW, NW corners, Northerly angle point and NE corner.
Set lead and tack RCE 29123 at SE corner.

CALIFORNIA COORDINATE SYSTEM ORDER: FIRST ☐ SECOND ☐ THIRD ☐

STATIONS USED: NGS (USC & GS) ☐ STATE ☐ COUNTY ☐ OTHER ☐ STATION _____ STATION _____

ZONE _____ ELEVATION _____ NORTHINGS (Y) _____ EASTINGS (X) _____

(Fold)

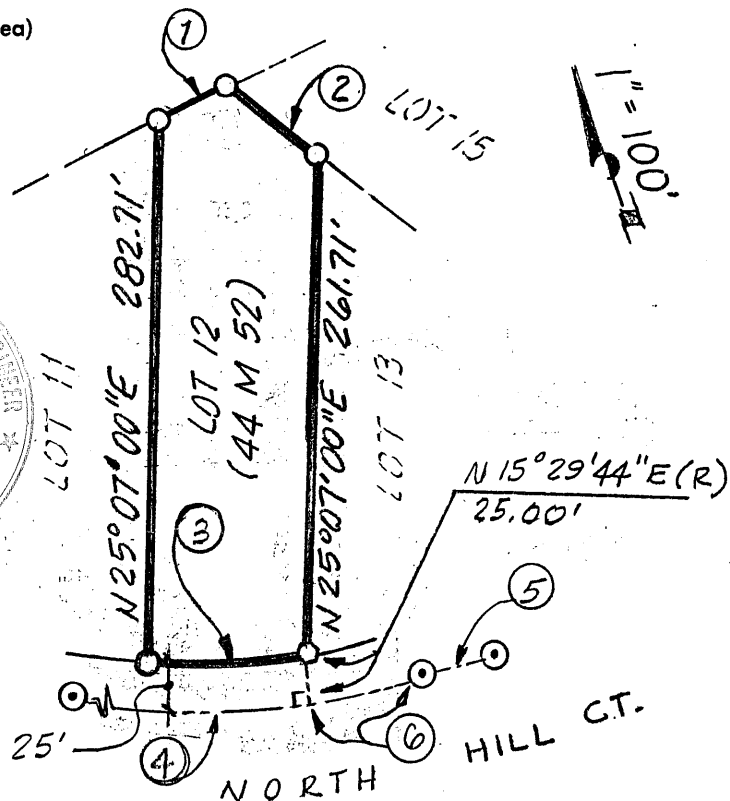
SKETCH: (Include reference tie or witness points, remarks and topo of area)

LEGEND

- 5/8" REBAR & CAP RCE 29123
- LEAD & TACK RCE 29123
- ⊙ FOUND STD. CITY STREET MONUMENT
- PROPERTY LINE
- MONUMENT LINE

DATA

- ① N 86°48'08"E 40.14'
- ② N 27°24'36"W 58.79'
- ③ Δ = 13°16'55"; R = 355'; L = 82.29'
- ④ Δ = 45°30'00"; R = 380'; L = 301.77' (M-M)
- ⑤ N 82°35'00"W 103.63' (M-M)
- ⑥ Δ = 08°04'44"; R = 380'; L = 53.58'



SURVEYOR'S CERTIFICATE

THIS CORNER RECORD WAS PREPARED BY ME OR UNDER MY DIRECTION IN CONFORMANCE WITH THE LAND SURVEYORS ACT ON 8/18 19 92

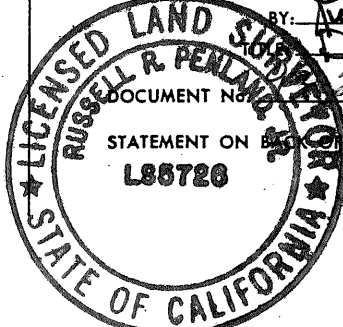
SIGNED: [Signature] E-P 3/31/95

I.S. or R.C.E. No.: RCE 29123

SEAL

COUNTY SURVEYOR'S CERTIFICATE

THE CORNER RECORD WAS RECEIVED 8-21 19 92 AND EXAMINED AND FILED 8-21 19 92 BY: Russell R. Penland DEPUTY COUNTY SURVEYOR



DOCUMENT NO. 20 STATEMENT ON 5 SHEET

BK 2 C.R. PG 52

YES ☐ NO ☒