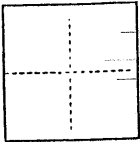


(For County Use Only)

CORNER RECORD

CR 176

COUNTY OF Alameda T. N/A R. N/A N/A MERIDIAN CALIFORNIACORNER TYPE: GOV'T. CORNER ☐ MEANDER ☐ RANCHO ☐ CONTROL ☐ OTHER ☒CORNER IDENTIFICATION — DATE OF VISIT JUNE 19 92

Subdivision Lot corners for:
 LOT 3, BLOCK 12, RESUBDIVISION OF BLOCKS 9-10-11-12-13-14,
 AND A PORTION OF BLOCK 16, ROCK RIDGE TERRACE,
 BOOK 26 OF MAPS, MAP NO. 15.

CORNER — LEFT AS FOUND ☐ FOUND AND TAGGED ☐ REESTABLISHED OBLITERATED CORNER ☒ REBUILT ☐

PHYSICAL DESCRIPTION OF CORNER FOUND; EVIDENCE AND METHOD USED TO IDENTIFY OR REESTABLISH

Reestablished from record data and found monuments as shown
 on the above named map. See sketch below for physical description
 of monuments found and set.

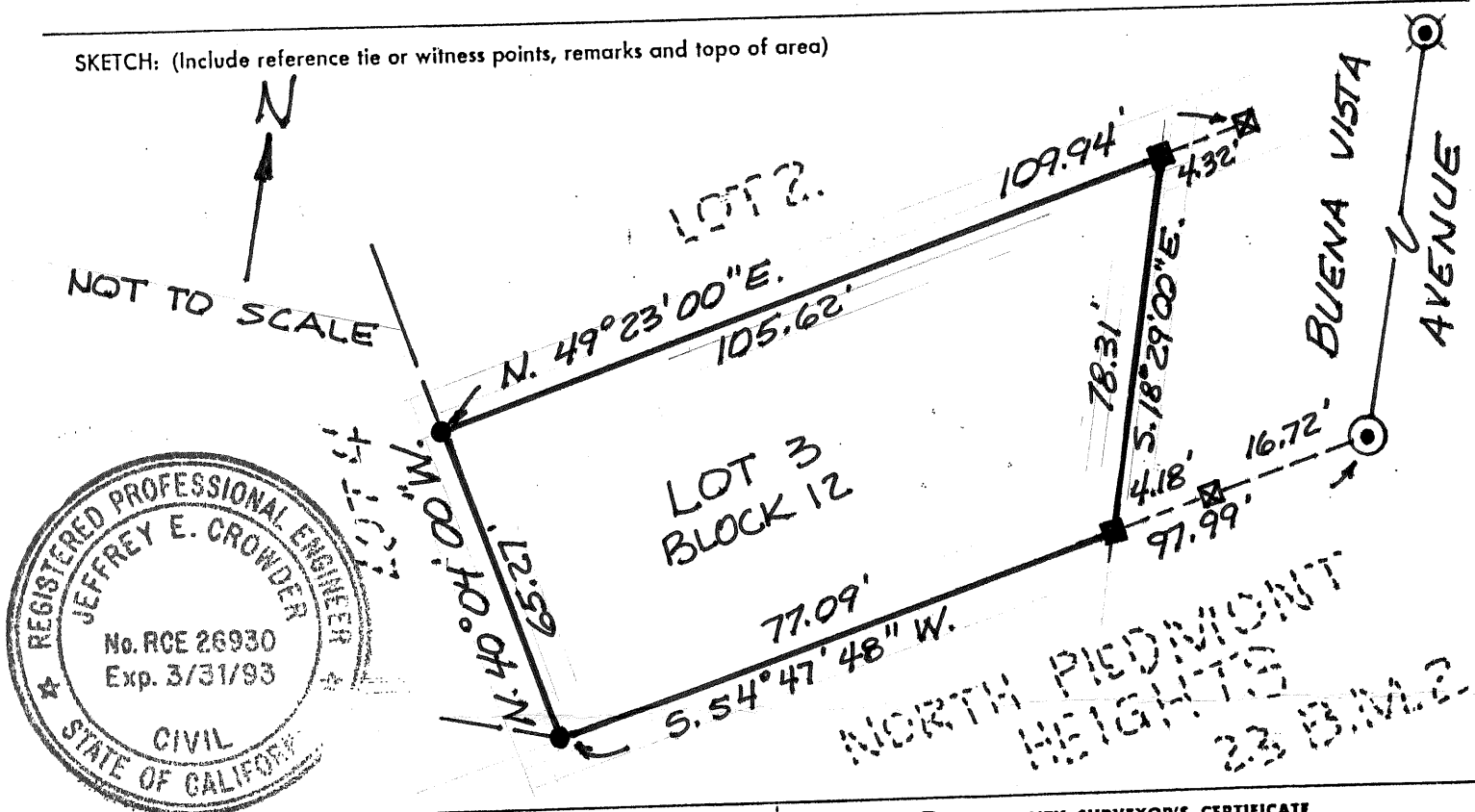
PHYSICAL DESCRIPTION OF MONUMENTS REBUILT OR PERPETUATED

- FOUND CITY OF OAKLAND MONUMENT PER CITY MONUMENT MAP 1500B492 SHEET 313
- FOUND MONUMENT WELL NO RECORD FOUND
- FOUND HUB PER SURVEY DATED MARCH 1, 1971 BY EDWARD MORIG R.C.E.
- FOUND CHISELED "X" IN SIDE WALK PER MORIG SURVEY MARCH 1, 1971
- SET 5/8" REBAR TAGGED R.C.E. 26930

CALIFORNIA COORDINATE SYSTEM ORDER: FIRST ☐ SECOND ☐ THIRD ☐
 STATIONS USED: NGS (USC & GS) ☐ N ☐ COUNTY ☐ A ☐ STATION ☐ STATION ☐
 ZONE ☐ ELEVATION ☐ NORTHINGS (Y) ☐ EASTINGS (X) ☐

(Fold)

SKETCH: (Include reference tie or witness points, remarks and topo of area)



SURVEYOR'S CERTIFICATE

THIS CORNER RECORD WAS PREPARED BY ME OR UNDER MY
 DIRECTION IN CONFORMANCE WITH THE LAND SURVEYORS ACT
 ON 7/16 19 92

SIGNED: Jeffrey E. CrowderL.S. or R.C.E. No.: 26930

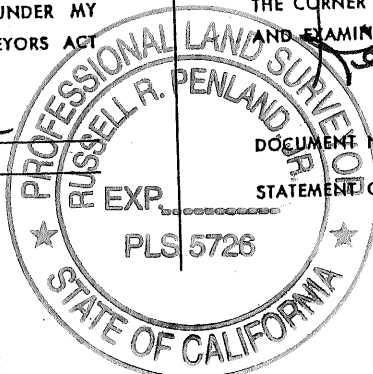
SEAL

COUNTY SURVEYOR'S CERTIFICATE

THE CORNER RECORD WAS RECEIVED 7-10 19 92
 AND EXAMINED AND FILED 6-26 19 2000.

TITLE: Deputy County SurveyorDOCUMENT No.

STATEMENT ON BACK OF SHEET

YES ☐NO ☐

Handwritten text at the top of the page, possibly a title or header.

Handwritten text in the middle section of the page.

