

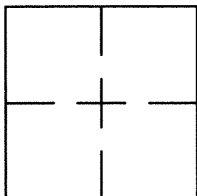
# CORNER RECORD

Document Number CR 8948

City of EDEN TOWNSHIP

County of ALAMEDA, California

Brief Legal Description PIN MONUMENT LOCATED WITHIN THE INTERSECTION OF BELLE ST AND JEFFER ST.



## CORNER RECORD

Government Corner ☐ Control ☒  
 Meander ☐ Property ☐  
 Rancho ☐ Other ☐  
 Date of Survey 9/20/16

## COORDINATES (Optional)

N. 2075930  
 E. 6105747  
 Zone \_\_\_\_\_ Datum \_\_\_\_\_  
 Elev. \_\_\_\_\_

Corner — Left as found ☒ Found and tagged ☐ Established ☐ Reestablished ☐ Rebuilt ☐

Identification and type of corner found: Evidence used to identify or procedure used to establish or reestablish the corner:  
FOUND PIN IN CONCRETE IN MONUMENT WELL.

MONUMENT WELL PAVED OVER. EXCAVATED PRIOR TO REFERENCING. FOUND 0.20' BELOW GRADE.

THIS POINT WAS REFERENCED PRIOR TO A CONSTRUCTION PROJECT IN THE VICINITY.

A description of the physical condition of the monument as found and as set or reset: \_\_\_\_\_  
FOUND AND SET POINTS AS SHOWN ON PAGE 2.

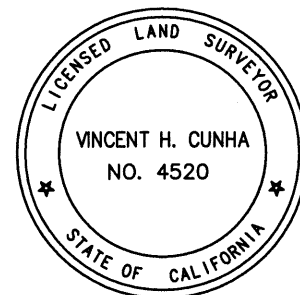
THE TIES SHOWN HEREON ARE FOR THE PURPOSE OF PERPETUATING FOUND MONUMENTATION.

NO CLAIM IS MADE AS TO THE RELATIONSHIP OF THE POINTS OR LINES SHOWN HEREON TO TRUE BOUNDARY LOCATIONS.

## SURVEYOR'S STATEMENT

This Corner Record was prepared by me or under my direction in conformance with the Land Surveyors' Act on SEPTEMBER 30, 2016.

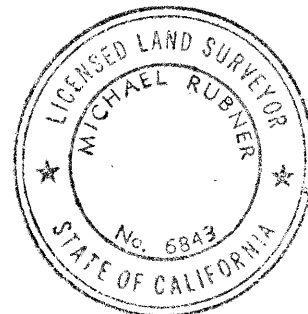
Signed Vincent H. Cunha L.S. Number LS 4520  
 VINCENT H. CUNHA



## COUNTY SURVEYOR'S STATEMENT

This Corner Record was received 3 OCTOBER 2016 and examined and filed 7 NOVEMBER 2016.

Signed Michael Rubner Title COUNTY SURVEYOR



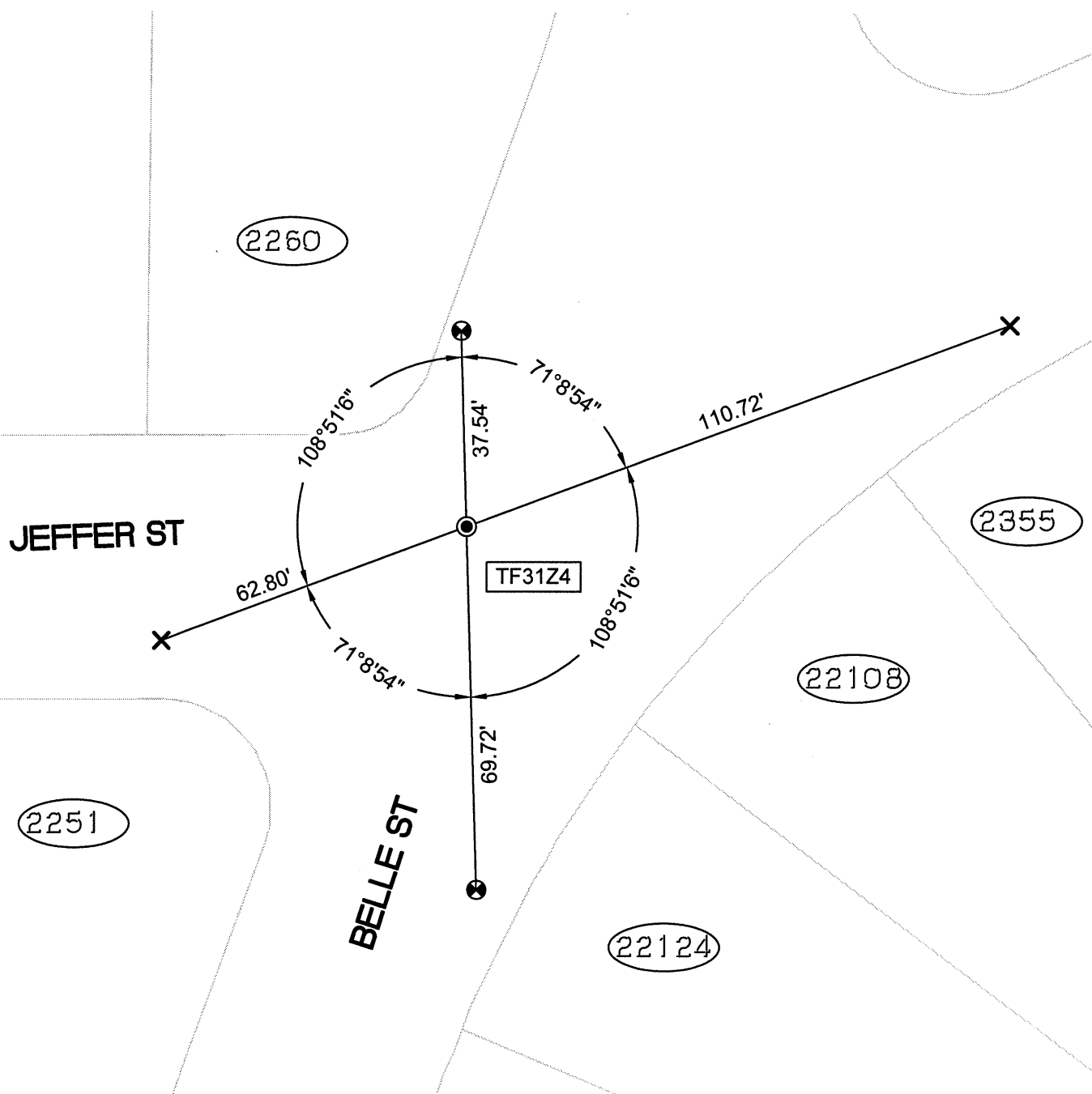
County Surveyor's Comment \_\_\_\_\_

SPEC-2300-PRE

SCALE: 1"=30'

## LEGEND

- FOUND IRON PIN IN CONCRETE IN MONUMENT WELL
- ⊗ SET CUT CROSS IN WALK
- ✕ SET CUT CROSS IN CURB
- ⊗ SET MAG AND SHINER
- SET REBAR & CAP STAMPED "CEI RP"
- AA##A# ALAMEDA COUNTY MONUMENT ID
- 19592 REFERENCE STREET ADDRESS



216153-Belle-CR05