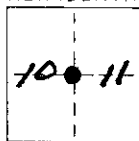


# CORNER RECORD

COUNTY OF MONO T. 1S R. 27E SEC. 10 MERIDIAN NOM CALIFORNIA

CORNER TYPE: GOV'T. CORNER ☒ MEANDER ☐ RANCHO ☐ CONTROL ☐ OTHER ☐

CORNER IDENTIFICATION - DATE OF VISIT SEPT. 27 19 89



CORNER - LEFT AS FOUND ☐ FOUND AND TAGGED ☐ REESTABLISHED OBLITERATED CORNER ☒ REBUILT ☐

PHYSICAL DESCRIPTION OF CORNER FOUND: EVIDENCE AND METHOD USED TO IDENTIFY OR REESTABLISH FOUND A 36" PINE WITH BLAZE VISIBLE BUT OVERGROWN WITH A 1944 FOREST SERVICE LOCATION TAG ATTACHED. ACCEPTED AS AN ORIGINAL BEARING TREE PER THE 1856 SURVEY RECORD.

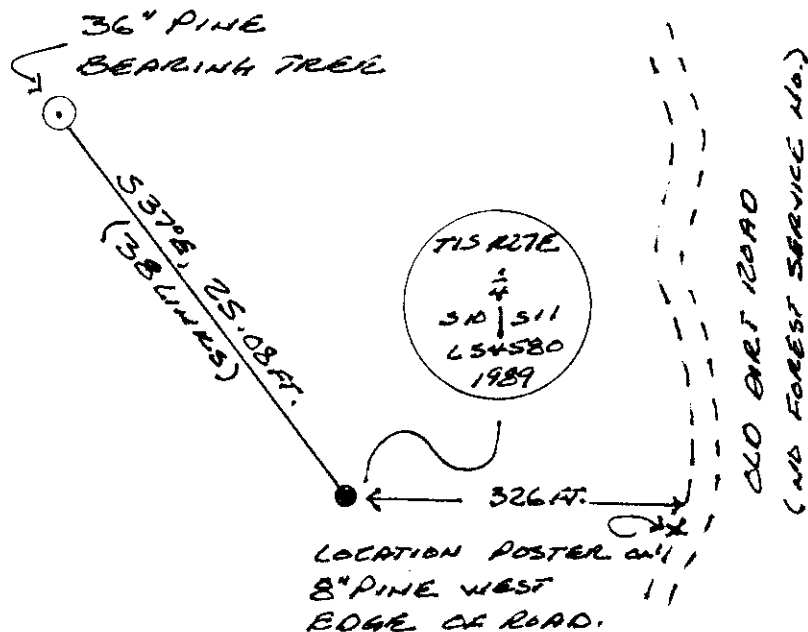
PHYSICAL DESCRIPTION OF MONUMENTS REBUILT OR PERPETUATED FROM G.L.C. RECORD DATA SET AN ALUMINUM POST 2 1/2" DIAMETER, 30" LONG, 18" IN THE GROUND WITH A 3" ALUMINUM CAP MARKED AS SHOWN BELOW.

CALIFORNIA COORDINATE SYSTEM ORDER: FIRST ☐ SECOND ☐ THIRD ☐

STATIONS USED: NGS (USC & GS) ☐ STATE ☐ COUNTY ☐ OTHER ☐ STATION \_\_\_\_\_ STATION \_\_\_\_\_

ZONE \_\_\_\_\_ ELEVATION \_\_\_\_\_ NORTHINGS (Y) \_\_\_\_\_ EASTINGS (X) \_\_\_\_\_

SKETCH: (Include reference tie or witness points, remarks and topo of area)

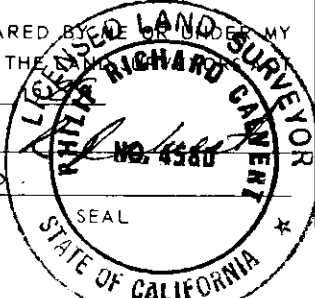


## SURVEYOR'S CERTIFICATE

THIS CORNER RECORD WAS PREPARED BY PHILIP RICHARD CLEMENT UNDER MY DIRECTION IN CONFORMANCE WITH THE SURVEYING ACT OF 1907, AS AMENDED, ON OCTOBER 4

SIGNED: Philip Richard Clement

L.S. or R.C.E. No.: 634580



## COUNTY SURVEYOR'S CERTIFICATE

THIS CORNER RECORD WAS RECEIVED 10.25 19 89 AND EXAMINED AND FILED 1-18 19 90

BY: JAMES WARD

TITLE: COUNTY SURVEYOR

DOCUMENT No. 1527-10-1

STATEMENT ON BACK OF SHEET

YES ☐ NO ☒