

- VERIFY QUANTITIES AND REQUIREMENTS OF ALL HVAC & KITCHEN EQUIPMENT PRIOR TO ROUGH IN.
- ALL TELEPHONE/DATA/TV CABLES AND WIRES, AND TERMINATIONS OF ALL REQUIRED CABLE AND JACKS WILL BE INSTALLED BY THIRD PARTY.
- POWER SUPPLY FOR COMPUTER AND CASH REGISTER (86A & 94) SHALL BE ON THE SAME CIRCUIT BREAKER, W/ISOLATED GROUND & ORANGE RECEPTACLE.
- ALL CIRCUITRY SHOWN WITHOUT TICKS SHALL HAVE (2) WIRES PLUS EQUIPMENT GROUNDING CONDUCTOR.
- WHEN WORKING IN JURISDICTIONS WHICH HAVE ADOPTED THE 2008 NEC OR LATER, ALL MULTI-WIRE BRANCH CIRCUITS SHALL HAVE SEPARATE NEUTRALS TO MEET THE REQUIREMENTS OF 2008 NEC 210.4(B).
- TRANSFORMERS SHALL BE MOUNTED ABOVE CEILING BELOW TRUSSES WITH LOW VOLTAGE WIRING FEEDING TO ALL EXTERIOR LIGHTS.
- ALL UNDERGROUND CONDUIT SHALL BE 12" BELOW F.F.

POWER PLAN GENERAL NOTES

2

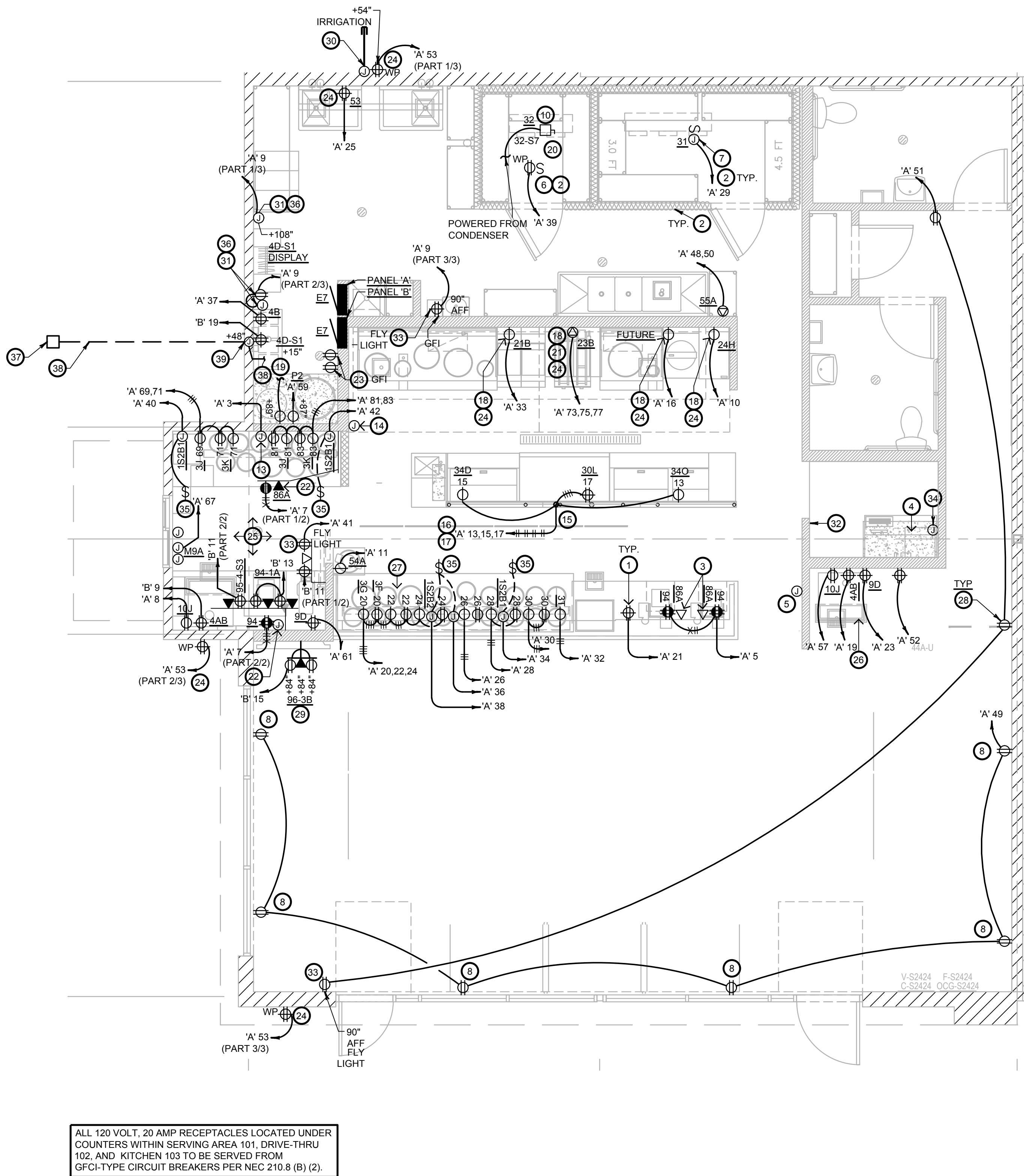
NOT TO SCALE E-100

1. ALL CIRCUITRY/CONDUIT FOR FRONT LINE EQUIPMENT TO BE ROUTED IN CASEWORK TO J-BOX IN WALL AND CONCEALED IN WALL.
2. PROVIDE SEALS AND EXPANSION COUPLINGS ON ALL CONDUITS ENTERING OR LEAVING AREA OF TEMPERATURE DIFFERENCE. REFER TO DETAIL 6/E-400 FOR ADDITIONAL INFORMATION.
3. PROVIDE (2) 1-1/2" CONDUITS WITH PULL STRINGS FROM CASH REGISTER TO MANAGER STATION. SEE P.O.S. AND SERVICE LINE ELEVATIONS, 3/E-200.
4. SEE 'MANAGER STATION ELEVATION' 1/E-200 FOR ADDITIONAL OUTLETS AND J-BOXES.
5. ANSUL PULL STATION. REFER TO DETAIL, 2/E-400.
6. REFER TO 'LTG AND DOOR HEATER' WIRING DIAGRAM, 10/E-400.
7. REFER TO 'COOLER EVAPORATOR COIL' WIRING DIAGRAM, 8/E-400.
8. SHOW WINDOW RECEPTACLE SHALL BE CONTROLLED VIA SWITCH "b". REFER TO LIGHTING SWITCHBANK SCHEDULE, SHEET 4/E-101. RECEPTACLE SHALL BE MOUNTED IN WALL AS CLOSE TO TOP OF STRUCTURAL HEADER AS POSSIBLE.
9. W.P. J-BOX FOR SIGNAGE. COORDINATE LOCATION WITH ARCHITECT / OWNER / SIGN PACKAGE. SIGN DISCONNECT PROVIDED BY SIGN CONTRACTOR.
10. REFER TO 'FREEZER EVAPORATOR COIL' WIRING DIAGRAM, 9/E-400. THE FAN COIL UNIT IS POWERED FROM THE CONDENSER UNIT VIA DICONNECT CONNECTION. HEAT TAPE PROVIDED AND INSTALLED BY ELECTRICIAN.
11. ROUTE HOMERUN THROUGH LIGHTING SWITCHBANK 'A' (SWITCH AS NOTED IN LOWER CASE). REFER TO SCHEDULE, SHEET 4/E-101, FOR MORE INFORMATION.
12. CONNECT TO VEGETABLE DISPLAY LIGHTING PROVIDED WITH WALK-IN COOLER.
13. HOOD CONTROL PANEL/ANSUL SYSTEM CABINET. MOUNT CABINET DIRECTLY BELOW T-BAR CEILING.
14. PROVIDE 2-GANG J-BOX @ 48" AFF FOR HOOD CONTROL SWITCHES. REFER TO M-400 AND M-401.
15. 1" CONDUIT STUB UP LOCATION IN STAINLESS STEEL POWER PANEL FOR ISLAND KITCHEN EQUIPMENT CONNECTION. REFER TO DETAIL 2/A-109. COORDINATE LOCATION WITH ARCHITECT / OWNER.
16. ROUTE CABLING / CIRCUITRY THROUGH 1" CONDUIT IN SLAB.
17. UTILIZE SEAL TIGHT CONDUIT FOR ALL WIRING INCLUDED ALONG LOW WALL PANEL.
18. ALL DEVICES UNDER HOOD TO BE CONNECTED THROUGH SHUNT-TRIPPED CONTACTOR. REFER TO 13/E-400 AND COOKLINE ELECTRICAL ELEVATIONS, 6/E-200.
19. SIMPLEX RECEPTACLE TO BE CONNECTED TO BACK-OF-HOUSE LIGHTING CIRCUITRY/CONTROL. CONTRACTOR TO PROVIDE PIGTAIL FROM CIRCULATION PUMP.
20. PROVIDE WEATHERPROOF RECEPTACLE FOR HEAT TAPE. COORDINATE FINAL LOCATION WITH REFRIGERATION INSTALLER.
21. ELECTRIC GRILL '23E': FEED WITH 2 #8, #10 GROUND, 3/4" CONDUIT. REFER TO 4/E-200.
22. SEE DRIVE THRU ELEVATION 2/E-200 FOR CONDUIT SIZES AND CONFIGURATIONS.
23. FURNISH AND INSTALL (2) HUBBELL GFSTBF20 FACELESS GFCI (OR EQUIVALENT) (1) FOR EACH CIRCUIT FEEDING EQUIPMENT BENEATH THE KITCHEN HOOD WHICH UTILIZES SIMPLEX 120V RECEPTACLES. INSTALL IN AN ACCESSIBLE LOCATION IN THIS GENERAL AREA, OR AS DIRECTED BY THE OWNER, ARCHITECT OR ENGINEER. PROVIDE ADDITIONAL OUTLETS AS REQUIRED TO FEED ALL SUCH LOADS BENEATH HOOD. FASTEN A PLASTIC LABEL STATING CIRCUIT AND EQUIPMENT SERVED FOR EACH OUTLET.
24. PROVIDE WATERPROOFING, COVER, IN-USE RED DOT (#CKSUV).
25. SEE FOR DRIVE-THRU ELEVATIONS, 2/E-200.
26. SEE DRINK STATION ELEVATIONS, 5/E-200.
27. SEE 3/E-200 FOR SERVICE LINE ELEVATIONS.
28. SEE DEVICE / RECEPTACLE SCHEDULE 3/E400.
29. SEE DINING ROOM MONITOR ELEVATION, DETAIL 8/E-200.
30. PROVIDE AND INSTALL 3/4" CONDUIT AND PULL STRING FROM CLOSEST LANDSCAPE AREA, THROUGH WALL UP TO EMPTY FLUSH MOUNTED JUNCTION BOX @ 54" A.F.F. (FOR IRRIGATION CONTROLS). CLOSE OFF CONDUIT IN LANDSCAPE AREA WITH REMOVABLE CAP. UTILIZE WP CIRCUIT A-53 NEAR ENTRY POINT.
31. REFER TO 9/E-200 FOR INSTALLATION OF C02 MONITOR.
32. SEE SWITCH BANK ELEVATION, DETAIL 7/E-200.
33. FLY LIGHT RECEPTACLE SHALL BE INSTALLED WITH A RECESSED CLOCK OUTLET. TYP OF ALL LOCATIONS REFER TO DETAIL 10/E-200.
34. SEE SECURITY KEY PAD ELEVATION 1/E200.
35. CONNECT HEAT LAMPS TO COUNTER-MOUNTED SWITCH PROVIDED AND INSTALLED BY CONTRACTOR. COORDINATE EXACT LOCATION WITH KITCHEN EQUIPMENT PROVIDER.
36. PANDA EXPRESS TO PROVIDE C02 MONITOR, E.C. TO MOUNT OVER J-BOX WITH WIRING THROUGH WALL CONDUIT FOR CLEAN INSTALLATION. PROVIDE ALL OTHER REQUIRED CONNECTIONS AND COMPONENTS FOR FULLY WORKING SYSTEM.
37. PROVIDE IN-GRADE QUAZITE 8"x8" PC STYLE POLYMER CONCRETE BOX OR EQUAL FOR UNDERGROUND CABLE REQUIRED FOR THE STORE. PART NO. PC081XXXXX OR SIMILAR. REFER TO ELECTRICAL SITE PLAN 1/E105.
38. PROVIDE 1" CONDUIT FOR CABLE DEDICATED FOR ENTIRE STORE FROM IN-GRADE 8X8 QUAZITE BOX TO EXTERIOR CLOSET 6X6 FLUSH MOUNTED JUNCTION BOX. TERMINATE INTERIOR ABOVE CEILING.
39. PROVIDE FLUSH MOUNTED NEMA 1 6X6 JUNCTION/PULL BOX AT +48" - HUBBELL OR EQUAL. ROUTE CABLE FROM EXTERIOR 6X6 IN 1" CONDUIT THROUGH BUILDING. TERMINATE INTERIOR ABOVE CEILING.
40. PROVIDE NORTH SHORE SAFETY 30AMP 1 PHASE GFCI (OR EQUAL) IN-LINE WITH 23E ELECTRICAL GRILL.

POWER PLAN KEYED NOTES

3

NOT TO SCALE E-100



POWER FLOOR PLAN

1

Scale: 1/4"=1'-0" E-100

INTERIM REVIEW DOCUMENTS
THIS DOCUMENT IS RELEASED FOR INTERIM REVIEW
AND IS ISSUED UNDER THE AUTHORITY OF BRADLEY
KALMANS, P.E. (P.E.#109651) ON 05.08.20. THIS
DOCUMENT IS NOT INTENDED TO BE USED FOR
CONSTRUCTION, BIDDING OR PERMIT SUBMITTAL.



SALASOBRIEN
[expect a difference]

Houston | Dallas/Ft. Worth | Baton Rouge
106 Decker Drive, Suite 200
Irving, Texas 75062
972.812.1270 | Registration No. F-4111
Salas O'Brien Project No. 2019-01619



PANDA EXPRESS, INC.
1683 Walnut Grove Ave.
Rosemead, California
91770

Telephone: 626.799.9898
Facsimile: 626.372.8288

All ideas, designs, arrangement and plans indicated or represented by this drawing are the property of Panda Express Inc. and were created for use on this specific project. None of these ideas, designs, arrangements or plans may be used by or disclosed to any person, firm, or corporation without the written permission of Panda Express Inc.

REVISIONS:

NO.	DESCRIPTION

ISSUE DATE:

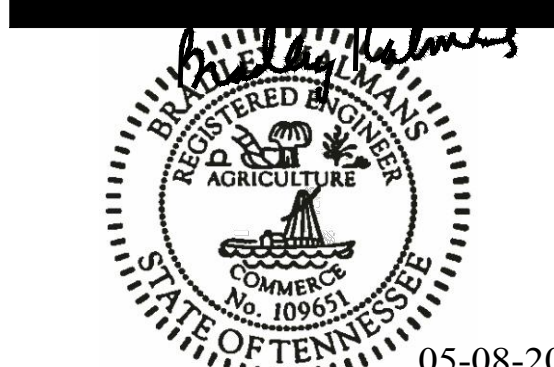
1	

DRAWN BY: DN

PANDA PROJECT #: D7276

PANDA STORE #: -

ARCH PROJECT #: 261-263



PANDA EXPRESS

5300 HICKORY HOLLOW DRIVE
ANTIOCH, TN. 376013

E-100

POWER FLOOR PLAN

TRUE WARM & WELCOME 2300 R2