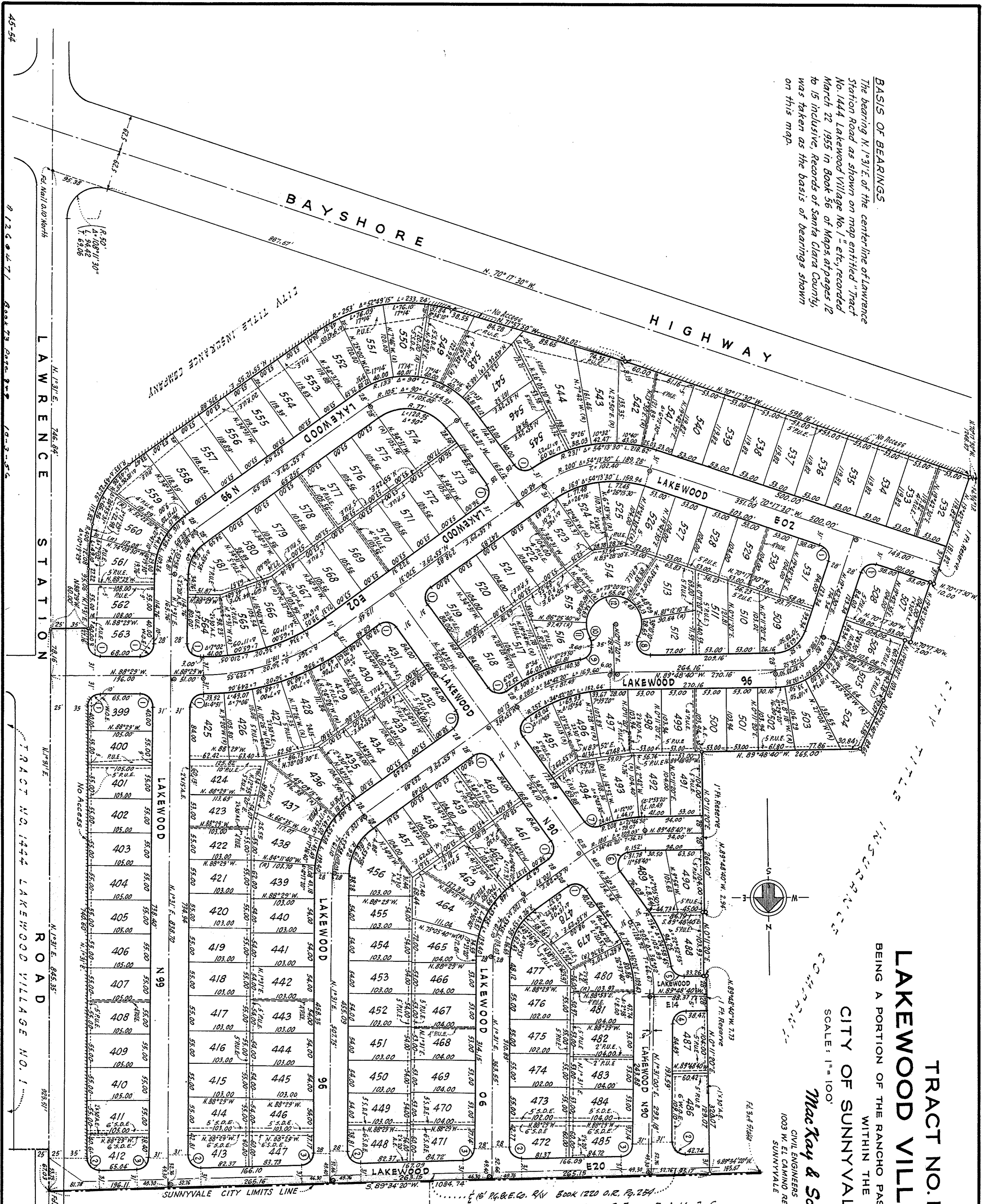


**BASIS OF BEARINGS.**  
The bearing N. 1° 31' E. of the centerline of Lawrence Station Road as shown on map entitled "Tract No. 1444 Lakewood Village No. 1" etc., recorded March 22, 1955 in Book 56 of Maps, at pages 12 to 15 inclusive, Records of Santa Clara County, was taken as the basis of bearings shown on this map.



**TRACT NO. 1567  
LAKEWOOD VILLAGE NO. 2**

BEING A PORTION OF THE RANCHO PASTORIA DE LAS BORREGAS

WITHIN THE

**CITY OF SUNNYVALE, CALIF.**

SCALE: 1" = 100'

JUNE 1956

**MacKay & Somphe**

CIVIL ENGINEERS  
1003 W. EL CAMINO REAL  
SUNNYVALE

**NOTES**

All distances and dimensions are given in feet and decimals thereof.  
The blue border line indicates the boundary of the subdivision.

- indicates iron pipe monument found.
- indicates 3/4 inch iron pipe monument set.
- indicates Public Utility Easement (All 4' P.U.E.s lie 2' on each side of lot line)
- W.I.E. = Wide Overlapping Easement
- A.E. = Anchor Easement, 2' wide x 30' long, lying 1' on each side of lot line, length being measured along lot line from the boundary line of adjoining P.U.E.
- S.D.E. = Storm Drain Easement
- indicates standard monument in monument box, at street intersections and curve points, on 5 foot offset from street centerlines.

**CURVE DATA**

No.	Radius	Cent. Angle	Arc Length
1	20'	90°	31.42
2	20'	91° 56' 40"	32.09
3	20'	88° 03' 20"	30.74
4	20'	88° 40' 20"	30.95
5	20'	80° 16' 35"	28.02
6	20'	112° 43' 40"	39.35
7	20'	177° 04' 30"	26.90
8	20'	119° 11'	41.60
9	20'	81° 24' 32"	28.42
10	20'	29° 11'	10.19
11	43'	32° 34'	24.44
12	43'	238° 22'	178.89