

1. ALL UTILITY CONSTRUCTION SHALL CONFORM TO THE LOCAL UTILITIES DEPARTMENT STANDARDS AND SPECIFICATION, AND WILL BE SUBJECT TO THEIR INSPECTION AND ACCEPTANCE.
2. THE LOCATION OF EXISTING UTILITIES SUCH AS WATER MAINS, SEWERS, GAS LINES, ETC., AS SHOWN ON THE PLANS HAVE BEEN DETERMINED FROM THE BEST AVAILABLE INFORMATION AND IS GIVEN FOR THE CONVENIENCE OF THE CONTRACTOR ASSUME RESPONSIBILITY FOR THE ACCURACY OF THE LOCATED IN THE FIELD PRIOR TO START OF CONSTRUCTION.
3. THE CONTRACTOR SHALL IMMEDIATELY NOTIFY THE ENGINEERS OF ANY DISCREPANCIES FOUND BETWEEN THE PLANS AND FIELD CONDITIONS PRIOR TO START OF CONSTRUCTION.
4. THE CONTRACTOR SHALL COORDINATE ALL WORK WITH THE EXISTING UTILITY EASEMENT.
5. CONTRACTOR SHALL INSPECT PIPE AND MATERIALS BEFORE INSTALLATION TO DETECT APPARENT DEFECTS.
6. CLEAR INTERIOR OF PIPE OF DIRT AND OTHER SUPERFLUOUS MATERIAL AS WORK PROGRESSES. MAINTAIN SWAB OR DRAG IN LINE AND PULL PAST EACH JOINT AS IT IS COMPLETED. PLACE PLUGS IN ENDS OF UNCOMPLETED CONDUIT WHENEVER WORK STOPS.
7. MAINTAIN MINIMUM COVER AND SPACING PER LOCAL CODES.
8. WHERE APPLICABLE, UTILITY TRENCHES CROSSING PAVEMENT AREAS SHALL BE BACK FILLED WITH COMPACTED GRANULAR MATERIAL IN ACCORDANCE WITH A.A.S.H.T.O.-T-99



1. PRIOR TO INSTALLATION CONFIRM ALL INSTALLATION REQUIREMENTS WITH THE VENDOR.

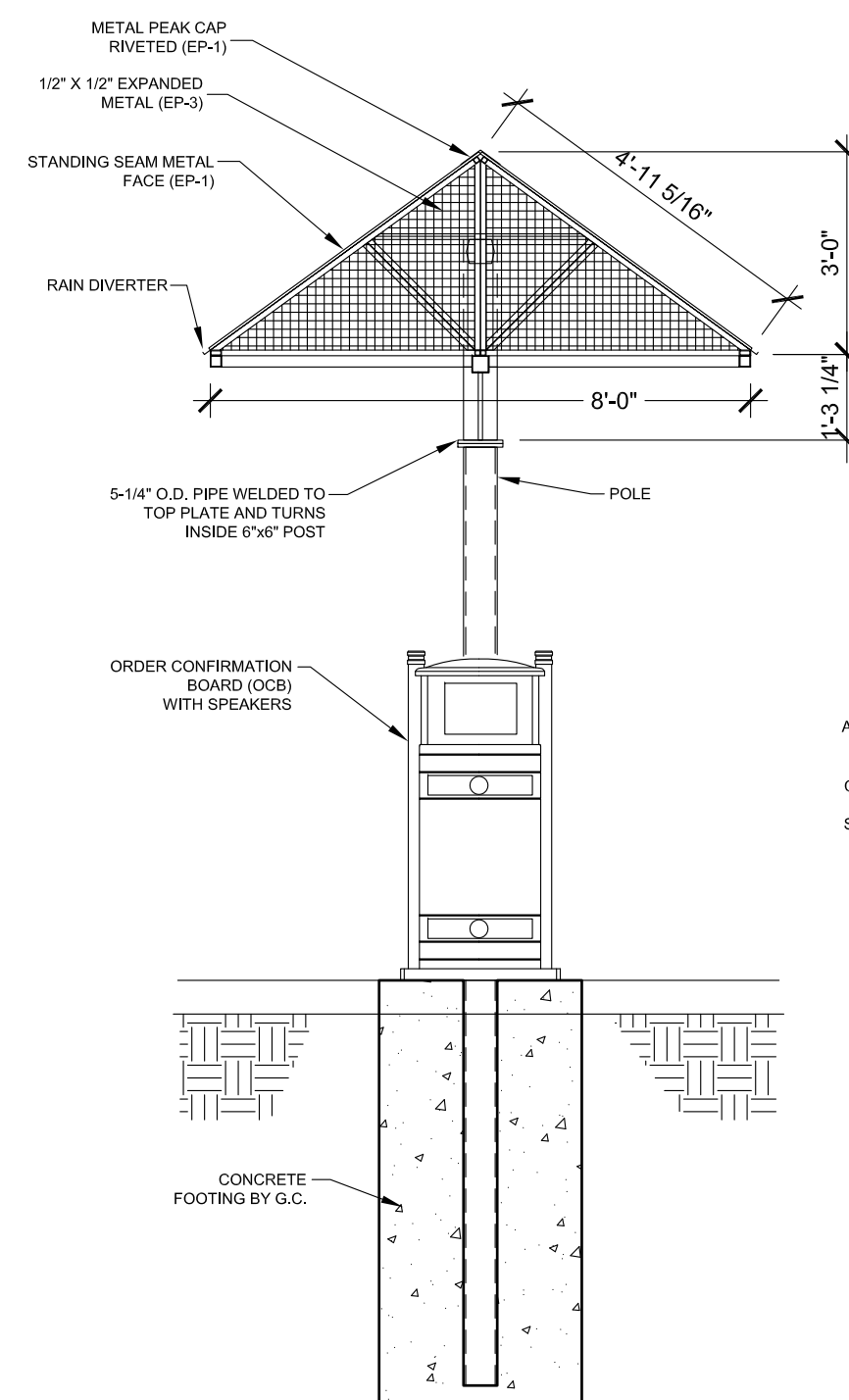
2. **BEFORE THE OCB CAN BE INSTALLED THERE ARE CERTAIN REQUIREMENTS, WHICH ARE DETAILED BELOW:**
 - a. **CONCRETE BASE HAS TO BE POURED, CURED AND PROPERLY SET IN PLACE** AND THE DIMENSIONS OF THE BASE SHOULD BE A MINIMUM OF:
 - **24 INCHES DEEP**
 - **24 INCH LONG**
 - **32 INCH WIDE**
3. **THE FOUR ANCHOR BOLTS (INCLUDED WITH THE OCB) NEED TO BE INSERTED TO FORM A RECTANGLE 13.5 INCHES BY 6.7 INCHES THE LONG SIDE OF WHICH IS PARALLEL TO THE LONGEST SIDE OF THE CONCRETE BASE. THE FRONT TWO BOLTS NEED TO BE DRILLED 9.4 INCHES FROM THE CURB EDGE TO COMPLY WITH THE REQUIREMENTS THAT THE OCB SCREEN BE 11.8 INCHES FROM THE CURB EDGE.**
4. **THERE ARE FOUR HOLES SET OUT FOR YOU, ENSURE EACH HOLE IS 7.9 INCHES DEEP AND 0.6 INCHES IN DIAMETER, DRILL OUT IT IF THE CONCRETE HAS FILLED IN.**
5. **WITHIN THESE FOUR 4 ANCHOR BOLTS (INCLUDED WITH THE OCB) NEED TO BE SECURED WITH 2-PACK RESIN/ADHESIVE (INCLUDED WITH THE OCB) WHICH SHOULD COMPLETELY FILL EACH HOLE.**
6. **THE ANCHOR BOLTS ARE 11.8 INCHES IN LENGTH AND 0.5 INCHES IN DIAMETER.**
7. **THE ANCHOR BOLTS SHOULD PROTRUDE 3.9 INCHES FROM GROUND LEVEL IN ORDER TO MOUNT THE OCB PROPERLY.**
8. **THE ADHESIVE SHOULD BE ALLOWED TO SET FOR 30 MINUTES BEFORE MOUNTING THE OCB.**
9. **TWO (2) 1 INCH DIAMETER CONDUITS NEED TO OPEN IN THE CENTER OF THE RECTANGLE FORMED BY THE ANCHOR BOLTS TO CARRY:**
 - **MAIN POWER**
 - **WIRE PLENUM VGA; AUDIO CABLE; RG59 CABLE FOR CAMERA**
10. **THE CONDUITS NEED TO BE A MINIMUM OF 1 INCH IN DIAMETER IN ORDER TO HOLD ALL THE REQUIRED CABLING, THERE CAN BE NO BREAKS IN THE CONDUIT AND A FLEXIBLE CONDUIT MUST BE USED. THIS MUST RUN FROM THE OCB BOX TO THE STORE - COMPLETE, DRAW WIRES ARE TO BE LEFT IN EACH CONDUIT, ONCE THE CONDUITS HAVE BEEN LAID, AND THE BASE IS CONCRETED IN (AS SHOWN ABOVE), PLEASE ENSURE YOU SEALING/GROUT THE CONDUIT TO ENSURE NO MOISTURE OR CONCRETE RUNS DOWN THE CONDUIT.**
11. **THE MAIN POWER IS TO BE TRENCHED BACK AND RUN THROUGH CONDUIT TO THE RESTAURANT AND THEN TO THE MAIN POWER DISTRIBUTION BOARD. THE POWER CABLE SHOULD BE RUN IN ITS OWN CONDUIT SEPARATE FROM ALL OTHER COMMUNICATIONS CABLES, IF THE CABLES ARE TO BE RUN UP THE WALL THEN 1 INCH MIN GALVANIZED STEEL BUNTING SHOULD BE USED, ENTRY TO THE BUILDING IS BEST TO BE MADE AT CEILING LEVEL.**
12. **THE VGA AND AUDIO CABLES SHOULD BE RUN IN THE SECOND ONE-INCH DIAMETER CONDUIT. THEY SHOULD BE TRENCHED AND RUN INTO THE RESTAURANT AS DOCUMENTED, DO NOT RUN POWER AND COMMUNICATION CABLES IN THE SAME CONDUIT!**
13. **THE ROAD INDUCTION LOOP (ONE 1 INCH DIAMETER FLEX-TUBING) IS TO BE SET INTO THE ASPHALT, WITH THE RETURN CABLE ALSO COMING OUT IN THE CENTER OF THE OCB BASE WITH THE 2 OTHER CONDUITS.**

The diagram shows four types of pipe fittings:

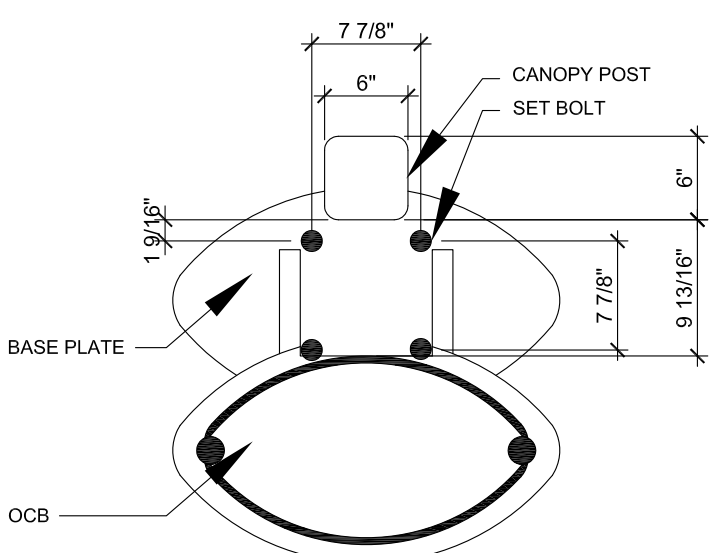
- SINGLE:** A straight pipe with a single flange at one end.
- TRIPLE 90°:** A vertical pipe with a horizontal branch at the top, forming a 90-degree angle.
- DOUBLE 90°:** A pipe with two 90-degree bends, forming an L-shape.
- DOUBLE 180°:** A vertical pipe with a horizontal branch at the top and another horizontal branch at the bottom, forming a 180-degree turn.



SD2 NTS



SD2	NTS
-----	-----



SD2 NTS

