

RECORD OF SURVEY NO. 33-12

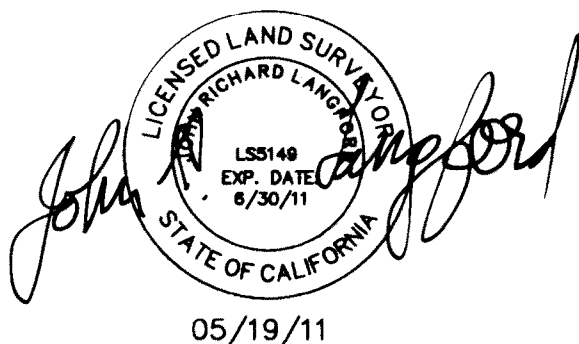
SHEET 1 OF 2

BEING A SURVEY OF THE N 1/2 OF THE SE 1/4, THE EAST 1/2 OF THE SW 1/4 AND LOT 4 OF SECTION 7, TOWNSHIP 3 NORTH, RANGE 27 EAST, MOUNT DIABLO MERIDIAN, COUNTY OF MONO, STATE OF CALIFORNIA

SURVEYOR'S STATEMENT

THIS MAP CORRECTLY REPRESENTS A SURVEY MADE BY ME OR UNDER MY DIRECTION IN CONFORMANCE WITH THE REQUIREMENTS OF THE PROFESSIONAL LAND SURVEYOR'S ACT AT THE REQUEST OF WALT LOWTHIAN IN SEPTEMBER, 2000.

John R. Langford
JOHN R. LANGFORD
L.S. NO. 5149
May 19, 2011
DATE:



05/19/11

COUNTY SURVEYOR'S STATEMENT

THIS MAP HAS BEEN EXAMINED IN ACCORDANCE WITH SECTION 8766 OF THE PROFESSIONAL LAND SURVEYOR'S ACT THIS 25th DAY OF May, 2011.

John S. Parrish
JOHN S. PARRISH, MONO COUNTY SURVEYOR
L.S. NO. 5050



RECORDER'S STATEMENT

FILED THIS 27th DAY OF MAY, 2011, AT 10:18 A.M. IN BOOK 5 OF RECORD OF SURVEYS AT PAGES 6-6A AT THE REQUEST OF WALT LOWTHIAN.

MONO COUNTY RECORDER
LYNDA ROBERTS

BY: *Debra VandeBake*
DEPUTY MONO COUNTY RECORDER

DOCUMENT NO: 2011003160
FEE: \$11.00

PURPOSE OF SURVEY:

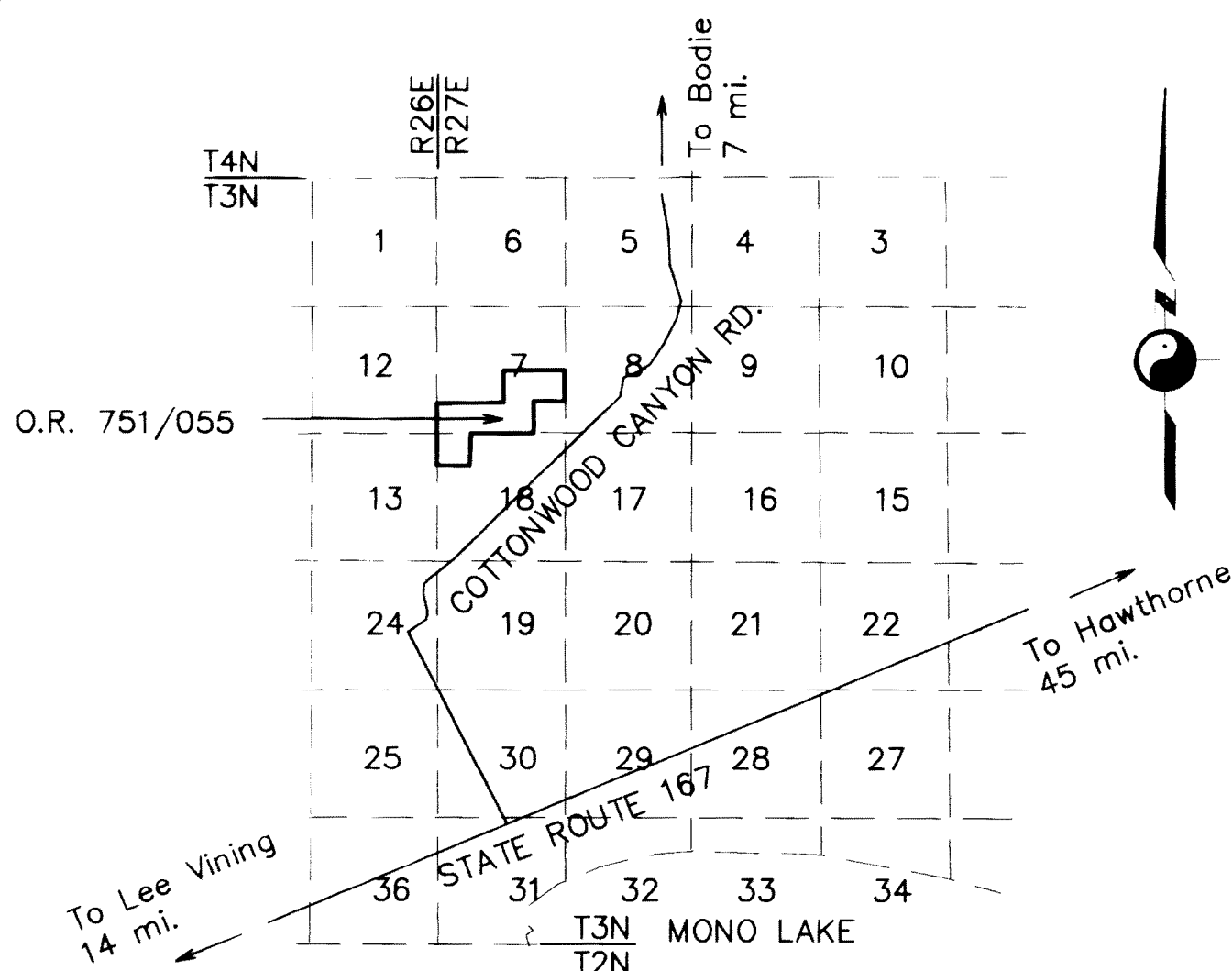
The reason for this record of survey map is as set forth in Section 8762 (b)(5) of the Professional Land Surveyor's Act; the points or lines set during the performance of the field survey of the parcel described in the easement referenced hereon are not shown on any subdivision map, official map, or record of survey.

BASIS OF BEARINGS:

North as determined by a solar observation taken on July 29, 1996.

CORNER DESCRIPTIONS

- 5 Found 3'Ø sagebrush covered rock mound. Charred post per R1. Bearings and distances from adjacent section corners to mound are within acceptable survey tolerance. Accepted as Township/Range corner per R1. Set a 1-1/2"Ø aluminum cap inscribed LS5149 on a 5/8"x24" rebar in mound.
- 6 Found a 30"x8"x8" (24"x6"x6" per R2) stone marked with a faint 4 in center of a 3'Ø rock mound. Accepted as 1/4 Section Corner S31 per R2. Set a 1-1/2"Ø aluminum cap inscribed S6 LS5149 on a 5/8"x24" rebar @ center of stone location in mound.
- 8 Found a 30"x16"x6" (25"x15"x5" per R2) stone marked with 5 notches on easterly edge and 1 notch on westerly edge in center of a 2'Ø rock mound. Accepted as Section Corner S31|S32 per S6|S5 R2. Set lead and tag inscribed LS5149 in top center of stone.
- 13 Found a 2" inner diameter iron pipe with tag inscribed LS4587 in a 2'Ø rock mound. Accepted as 1/4 Section Corner S7 as set by S18 single proportion per R4.
- 16 Found 1"Øx7' high iron pipe adjacent to and north of a 2'Ø rock mound Charred post per R1 not found. Bearings and distances from adjacent section corners to mound are within acceptable survey tolerance. Mound was accepted as section corner per R3. Accepted as Section Corner S12|S7 per R1 and R3. Set a 1-1/2"Ø aluminum cap inscribed LS5149 on a 5/8"x24" rebar in center of stone mound.
- 23 Found a 2" inner diameter iron pipe with tag inscribed LS4587 in a 2'Ø rock mound. Accepted as E 1/16 Corner S7 per R3. S18
- 25 Found a 1-1/4" inner diameter x 3' high iron pipe scribed CWSCS T3N R27E S7/S8/S17/S18 IN 3'Ø rock mound. Corner was accepted as section corner per R3 and R4. Accepted as Section Corner S7|S8 per R1, R3 AND R4. S18|S17
- 28 Found a 2'Ø rock mound with a 3/4" inner diameter x 6' long iron pipe lying westerly from mound. Charred post per R1 not found. Bearings and distances from adjacent section corners to mound are within acceptable survey tolerance. Accepted as 1/4 Section Corner S7|S8 per R1.
- 34 Found a 1'Ø rock mound with small wood post lying adjacent to mound. Bearings and distances from adjacent section corners to mound are within acceptable survey tolerance. Accepted as 1/4 Section Corner S6 per R1. Set a 1-1/2"Ø aluminum cap inscribed S7 LS5149 on a 5/8"x24" rebar in center of stone mound.
- 45 Found a 18"x12"x5" stone clearly marked 1/4 in the center of a 3'Ø rock mound. Charred post per R1 not found. Accepted as 1/4 Section Corner S1|S6 per R1.
- 46 Corners per R1 searched for and not found. Nothing set.



VICINITY MAP
NO SCALE

LEGEND:

- Found Section Corner as more particularly described in the Corner Descriptions hereon.
- Set a 1-1/2"Ø aluminum cap inscribed LS 5149 on a 5/8"Øx24" rebar in a rock mound.
- ⊗ Found monument as more particularly described in the Corner Descriptions hereon.
- ⊙ Set a 2"Ø aluminum cap inscribed LS 5149 on a 5/8"Øx24" rebar in a rock mound.
- Point not set. See Corner Descriptions hereon.
- R(*) Based on record information per (*)
- m Based on field measurements.

HISTORY OF SURVEYS

- R1: USSGO Survey of Township 3 North, Range 27 East, Mount Diablo Meridian examined and approved by the Surveyor General's Office, San Francisco, CA on December 17, 1857.
- R2: USSGO Survey of Township 4 North, Range 27 East, Mount Diablo Meridian examined and approved by the Surveyor General's Office, San Francisco, CA on March 11, 1878 and May 23, 1882.
- R3: Parcel Map No. 34-39 recorded on February 23, 1988 in Book 4 of Parcel Maps, Page 28.
- R4: Record of Survey No. 33-4 for Baron Hilton Flying "M" Ranch recorded on October 22, 1984 in Book 1 of Record of Surveys, Page 101.