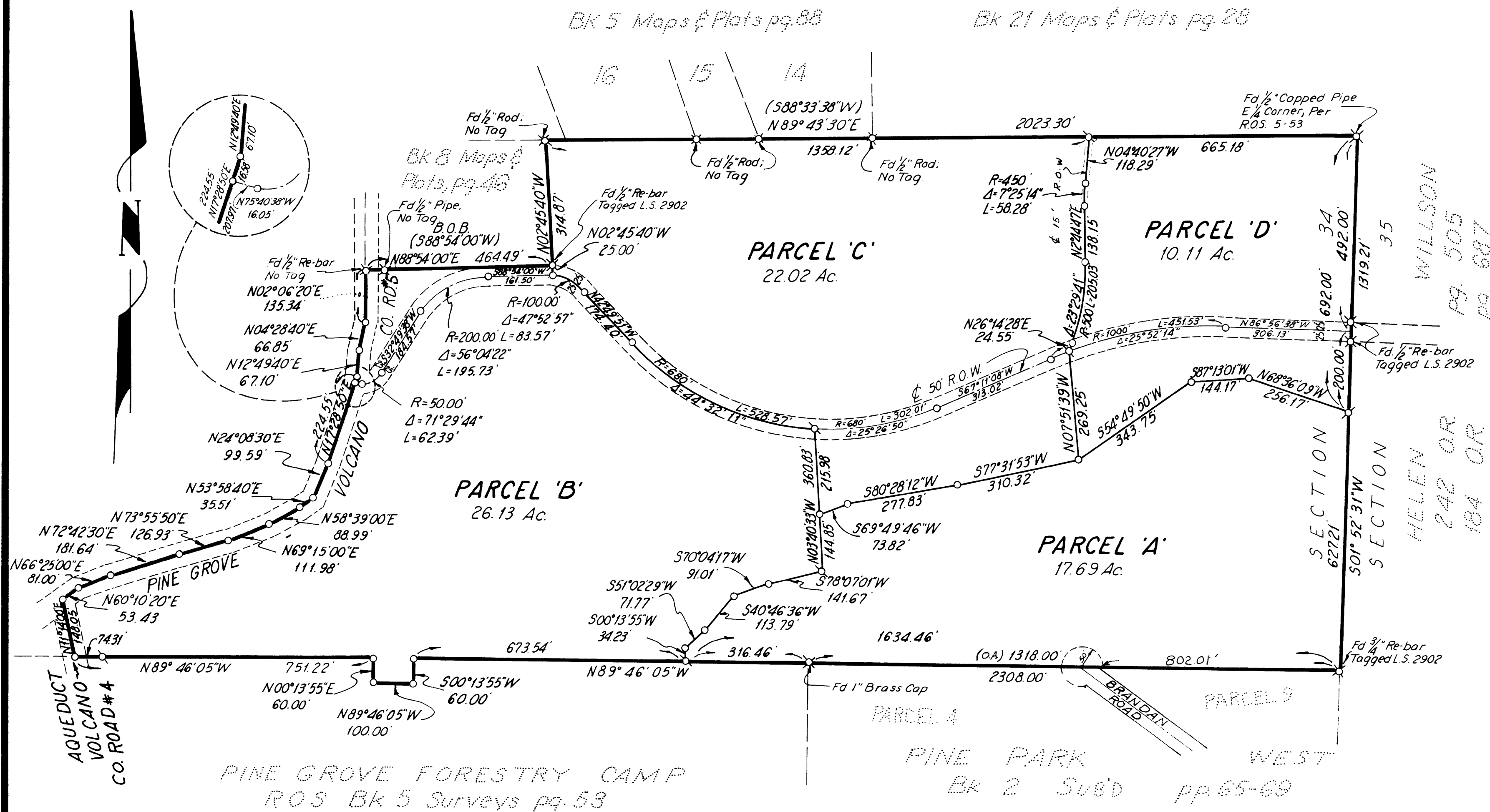


PARCEL MAP NO. 1243 FOR TOM RASICA
VOL. 217 O.R. PAGE 218
IN THE UNINCORPORATED TERRITORY OF THE COUNTY OF AMADOR, CALIFORNIA
**BEING A PORTION OF THE S $\frac{1}{2}$ OF SECTION 34
T. 7N., R. 12E., M. D. B. & M.**

Scale: 1" = 200'

O'DELL ENGINEERING INC.
Civil Engineers · Planners · Surveyors
Nevada City & Pine Grove, California

July, 1973



SURVEYOR'S CERTIFICATE

This map was prepared by me or under my direction and is based upon a field survey, in conformance with the requirements of the Subdivision Map Act, at the request of Tom Rasica in July, 1973. I hereby certify that it conforms to the approved tentative map and the conditions of approval thereof; that all provisions of applicable state law and local ordinances have been complied with.

Johnnie J. O'Dell, R.C.E. 19660

COUNTY SURVEYOR'S CERT.

This map has been examined this 3rd day of Oct, 1973, for conformance with the requirements of section 11525 of the Subdivision Map Act.

South Anna L.S. 2774
Amador County Surveyor; L.S. 2774

RECORDER'S CERTIFICATE

Filed this 3rd day of Oct, 1973, at 4:15 P.M. in Book 23 of Map & Plats at page 52 at the request of the Amador County Surveyor. fee \$5.00

Anthony Sutton By: Patricia L. Surigle
Amador County Recorder

BASIS OF BEARINGS

The meridian of this map is identical to the map recorded in Book 5 of Maps and Plats at page 46, public records of Amador County, B.O.B. N88°54'00"E

LEGEND

- ⊗ Found mon. as noted.
- ⊙ Set 3/4" I.P. tagged R.C.E. 19660
- Nothing set, nothing found.
- (.....) Denotes record data.