

BASIS OF BEARINGS

S2°07'28"W - BETWEEN FOUND MONUMENTS MARKING THE NORTHWEST AND SOUTHWEST CORNERS OF PARCEL 5 AS SHOWN ON A MAP FILED IN MAP CASE 2, DRAWER 12, PAGE 3, MENDOCINO COUNTY RECORDS.

LEGEND

- SET 1/2" IRON PIPE MARKED L.S. 4805.
- FOUND MONUMENT AND CORNER ACCESSORIES AS SHOWN ON M.C.2, D.12, P.3, M.C.R. UNLESS NOTED OTHERWISE.
- ⊗ NO POINT FOUND OR SET THIS SURVEY.
- ① SEE CORNER INFORMATION

RECORD INFORMATION

THE BEARINGS AND DISTANCES OF THIS SURVEY AGREE WITH REFERENCED RECORD DATA UNLESS SHOWN OTHERWISE.

RECORD DATA FROM:

()¹ M.C.2, D.12, P.3, M.C.R.

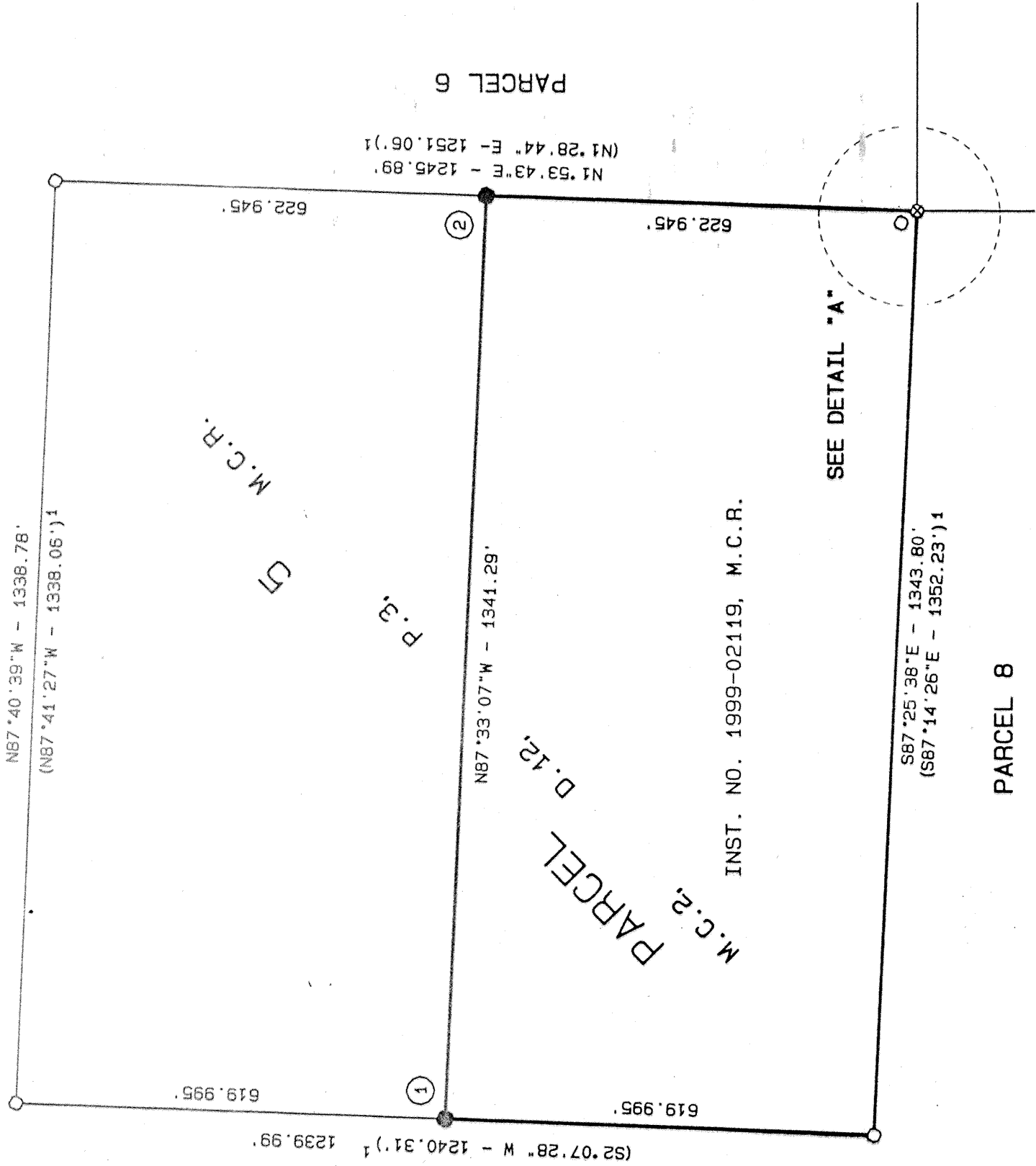
NOTES

1. THE MONUMENT WAS NOT ACCEPTED FOR THE SOUTHEAST CORNER OF PARCEL 5 AS SHOWN ON M.C.2, D.12, P.3, M.C.R. ACCORDING TO JOSEPH SCHERER, PLS 3089. HIS ORIGINAL FIELD NOTES SHOW THE MONUMENT WAS SET IN THE CORRECT POSITION WITH RESPECT TO THE FOUND BEARING TREES. THE CORRECT POSITION WITH RESPECT TO THE FOUND BEARING TREES WAS USED TO ESTABLISH THE ORIGINAL POSITION OF THE MONUMENT.
2. THE POSITION OF THE SOUTHEAST CORNER OF PARCEL 5 WAS ESTABLISHED FROM A RECORD DISTANCE RELATIONSHIP WITH THE FOUND BEARING TREES (DISTANCES MEASURED TO THE CENTER OF THE TREE).
3. THE BEARINGS AND DISTANCES TO BEARING TREES MARKED THIS SURVEY ARE TO A BRASS DISC MARKED L.S. 4805 UNLESS NOTED.

CORNER INFORMATION

- ① SET MONUMENT AS NOTED FOR A PROPERTY CORNER. BEARING TREES THIS SURVEY: 12" WHITEOAK N52°03'W - 25.1', 5" FIR S41°51'E - 5.8'
- ② SET MONUMENT AS NOTED FOR A PROPERTY CORNER. BEARING TREES THIS SURVEY: 16" TANOAK N52°03'W - 25.1', 24" TANOAK S16°41'E - 7.0'

BASIS OF BEARINGS



RECORD OF SURVEY

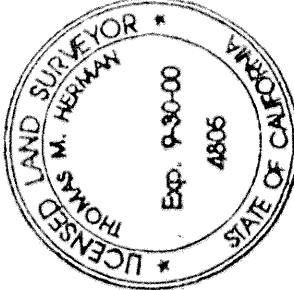
BEING A PORTION OF SECTION 5, TOWNSHIP 17 N., R. 13 W., M.D.B. & M. AS SHOWN ON A MAP FILED IN M.C.2, D.12, P.3, M.C.R.

MENDOCINO COUNTY,
SCALE: 1" = 200'.
CALIFORNIA
JULY, 1999

SURVEYOR'S STATEMENT

THIS MAP CORRECTLY REPRESENTS A SURVEY MADE BY ME OR UNDER MY DIRECTION IN CONFORMANCE WITH THE REQUIREMENTS OF THE LAND SURVEYORS' ACT AT THE REQUEST OF JOANNE PATTERSON ON JULY 7, 1999.

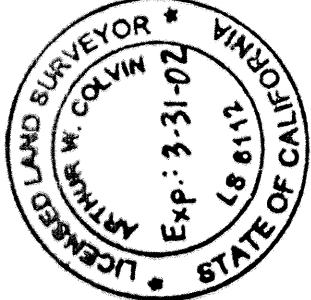
THOMAS M. HERMAN
P.L.S. 4805
LIC. EXP. DATE - 9/30/00



COUNTY SURVEYOR'S STATEMENT

THIS MAP HAS BEEN EXAMINED IN ACCORDANCE WITH SECTION 8766 OF THE LAND SURVEYORS' ACT THIS 13TH DAY OF FEBRUARY 20 00.

STANLEY TOWNSEND
COUNTY SURVEYOR
ARTHUR W. COLVIN
DEPUTY COUNTY SURVEYOR
P.L.S. 6112
LIC. EXP. DATE 3/31/02



RECORDER'S STATEMENT

FILED THIS 3RD DAY OF February, 20 00, AT 8:57 A.M., IN MAPS, DRAWER 67, PAGE 4, M.C.R. AT THE REQUEST OF T. M. HERMAN & ASSOCIATES.

MARSHA A. WHARF
COUNTY CLERK-RECORDER
FEE \$ 8.00
BY: Rita Bernard
DEPUTY

SHEET 1 OF 1
MAPS
DRAWER 67
PAGE 4