

CORNER RECORD

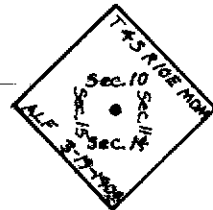
COUNTY OF Stanislaus T. 4S R. 10E Mt. Diablo MERIDIAN CALIFORNIA
 CORNER TYPE: GOV'T. CORNER ☒ MEANDER ☐ RANCHO ☐ CONTROL ☐ OTHER ☐
 CORNER IDENTIFICATION — DATE OF VISIT 1-24 85



CORNER — LEFT AS FOUND ☒ FOUND AND TAGGED ☐ REESTABLISHED OBLITERATED CORNER ☐ REBUILT ☐

PHYSICAL DESCRIPTION OF CORNER FOUND; EVIDENCE AND METHOD USED TO IDENTIFY OR REESTABLISH

Fd Section Corner - 8" dia. CM w/copper plate in well casing by ALF. 1.3' deep.

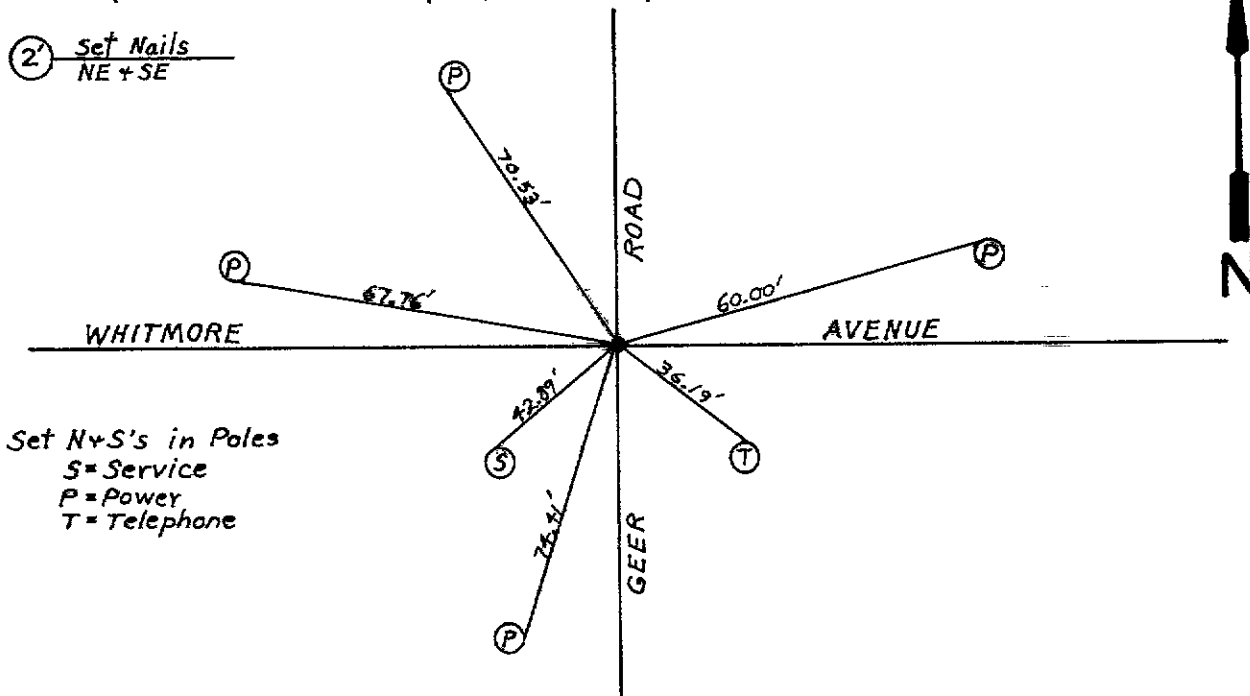


PHYSICAL DESCRIPTION OF MONUMENTS REBUILT OR PERPETUATED

CALIFORNIA COORDINATE SYSTEM ORDER: FIRST ☐ SECOND ☐ THIRD ☐
 STATIONS USED: NGS (USC & GS) ☐ STATE ☐ COUNTY ☐ OTHER ☐ STATION _____ STATION _____
 ZONE _____ ELEVATION _____ NORTHINGS (Y) _____ EASTINGS (X) _____

SKETCH: (Include reference tie or witness points, remarks and topo of area)

(2) Set Nails
NE + SE



Set N+S's in Poles
 S = Service
 P = Power
 T = Telephone

SURVEYOR'S CERTIFICATE

THIS CORNER RECORD WAS PREPARED BY ME OR UNDER MY DIRECTION IN CONFORMANCE WITH THE LAND SURVEYORS ACT ON 26-APRIL 1985

SIGNED: Wayne A. Sutton
 L.S. or R.C.E. No.: 3863

COUNTY SURVEYOR'S CERTIFICATE

THE CORNER RECORD WAS RECEIVED 7-26 1985 AND EXAMINED AND FILED 7-26 1985
 BY: [Signature]
 TITLE: County Surveyor

DOCUMENT No. 00525

STATEMENT ON BACK OF SHEET YES ☐ NO ☒