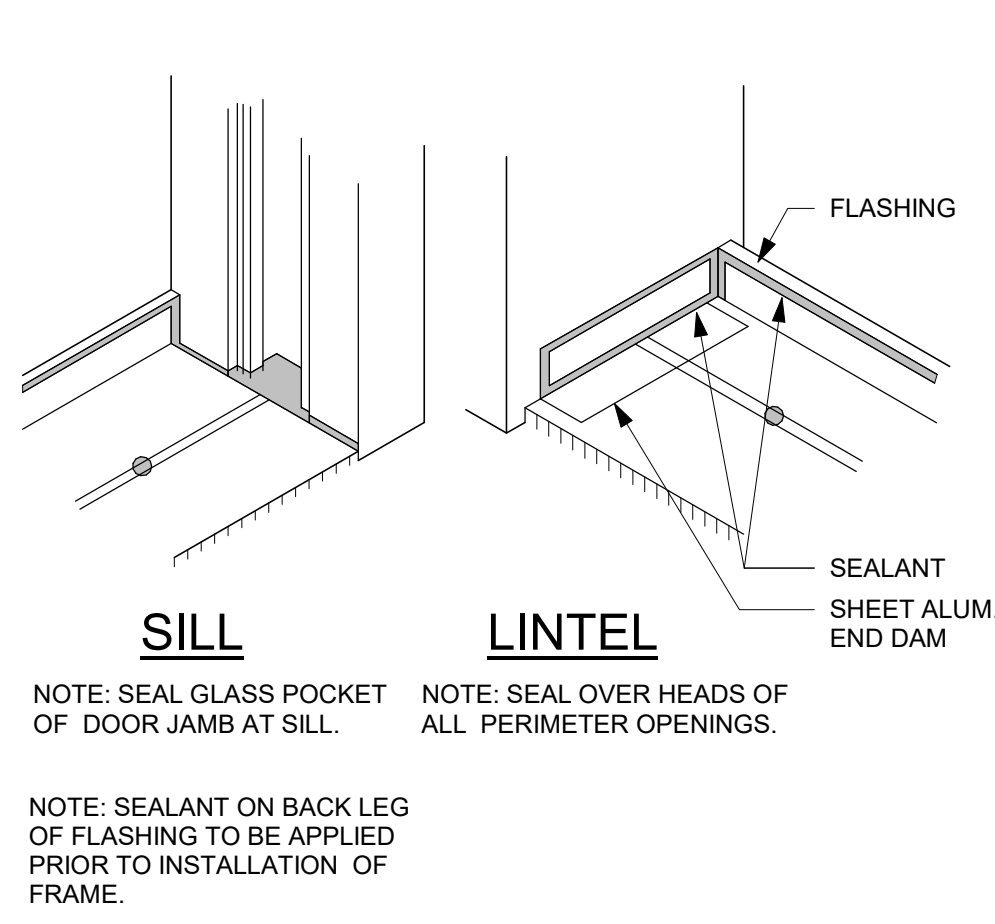
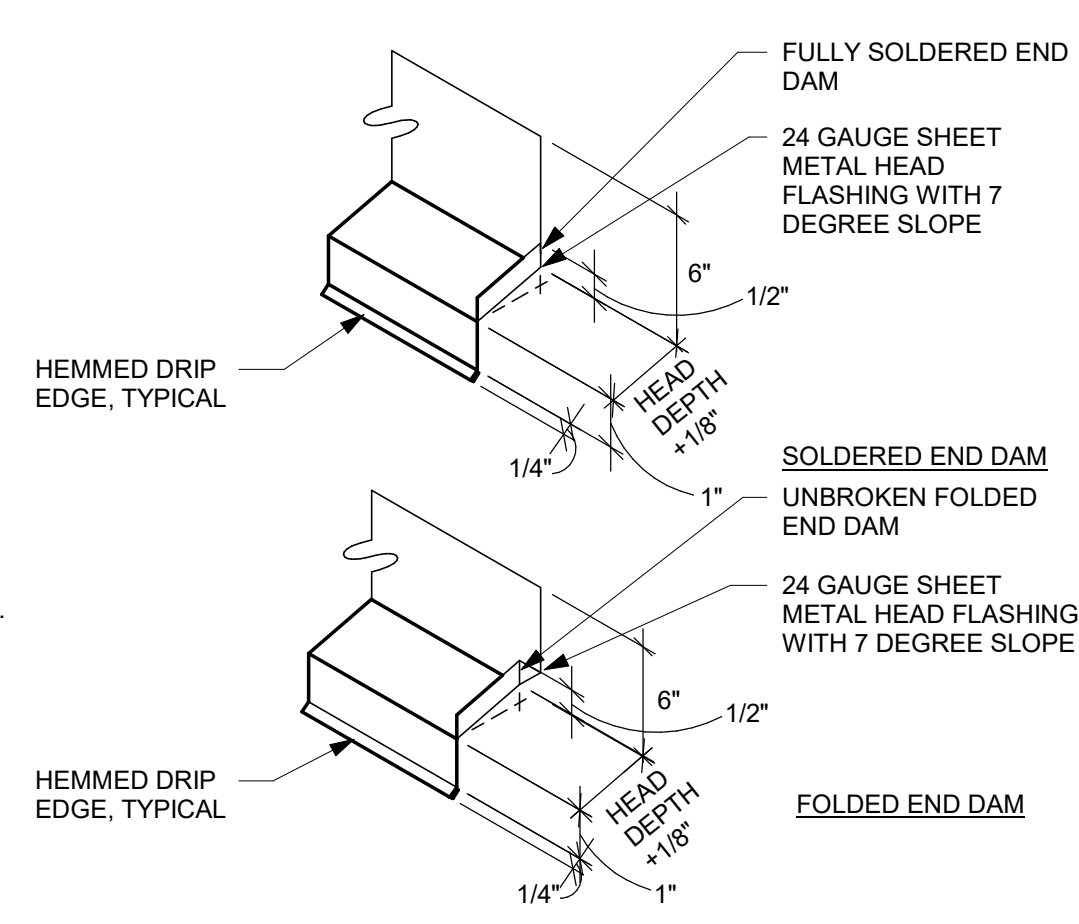


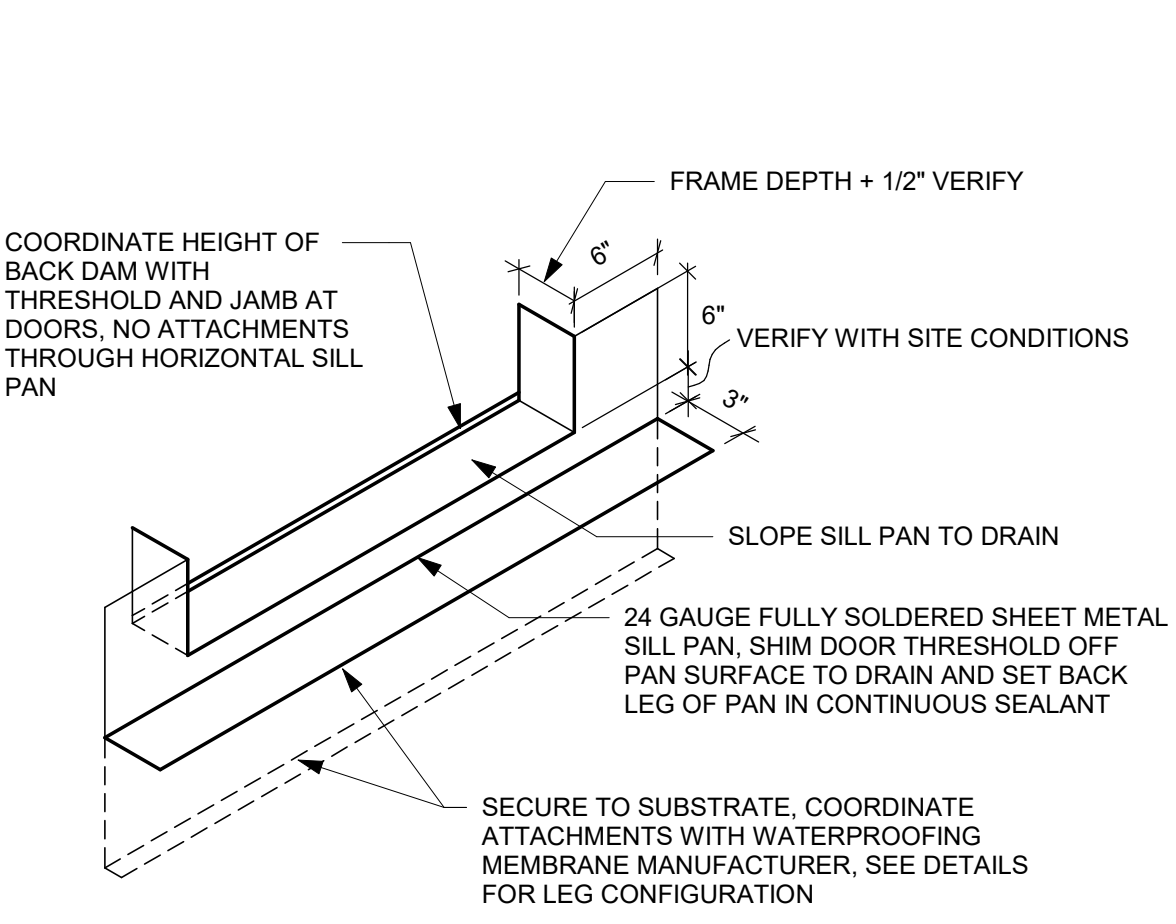
11 WEATHER RESISTIVE BARRIER  
Scale: 3/8" = 1'-0"



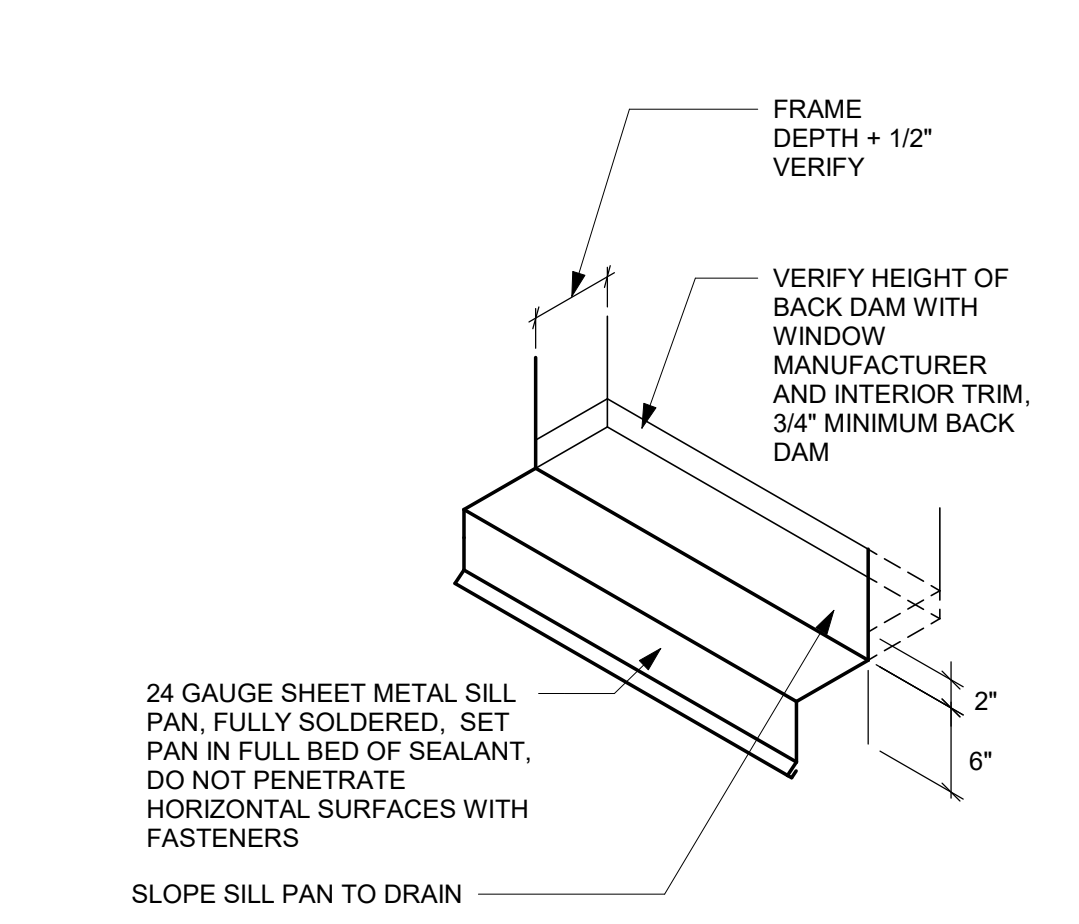
12 FLASHING DETAIL AT JAMB  
Scale: 1 1/2" = 1'-0"



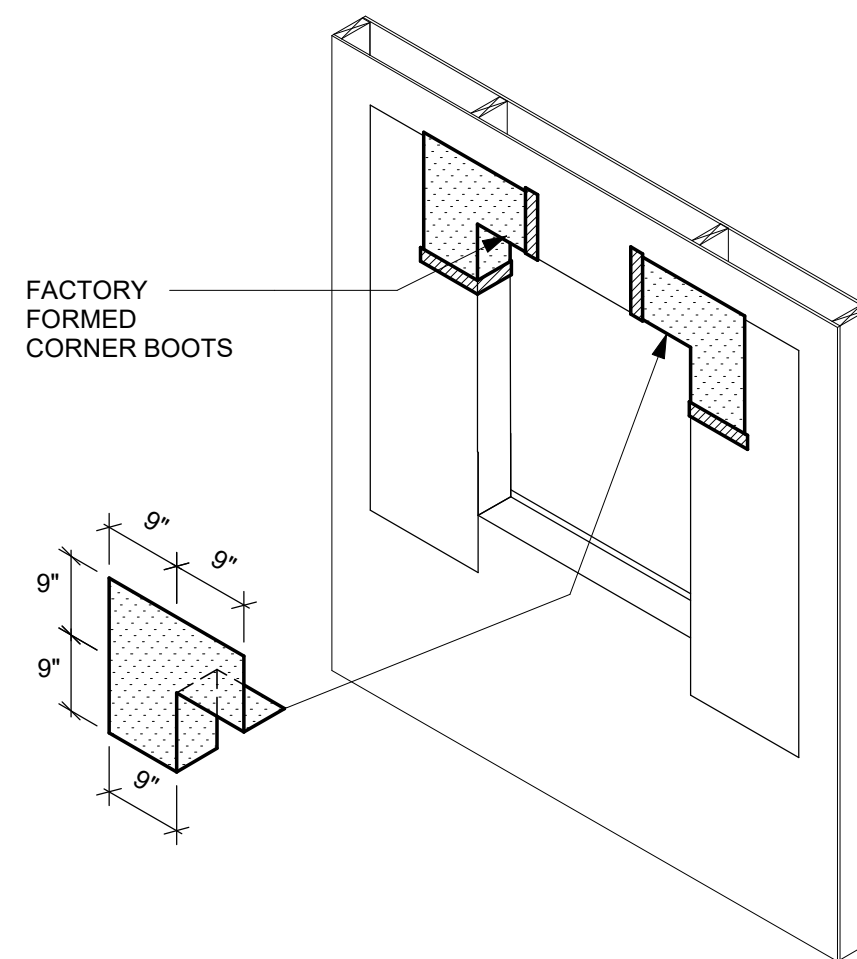
13 TYP. HEAD FLASHING  
Scale: 3/4" = 1'-0"



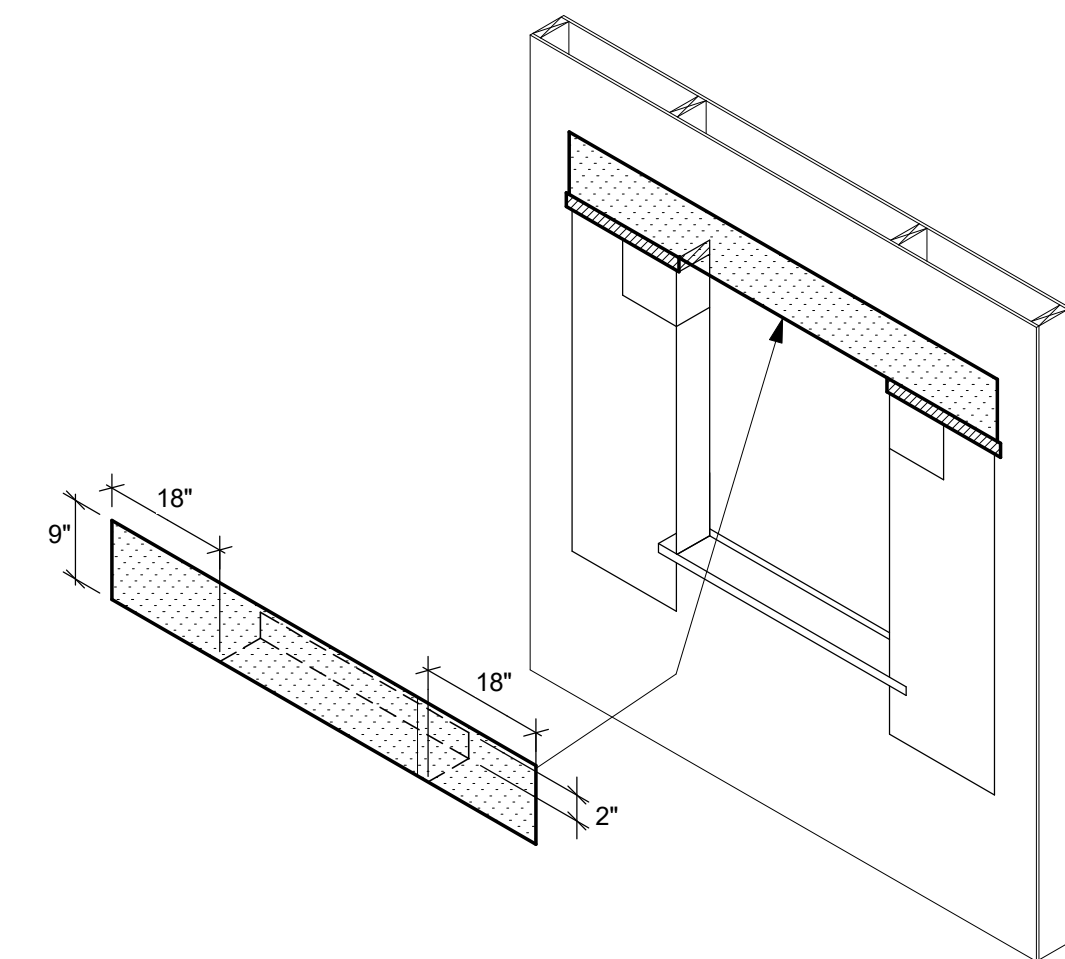
14 TYP. STOREFRONT & DOOR PAN (SHEET METAL)  
Scale: 1" = 1'-0"



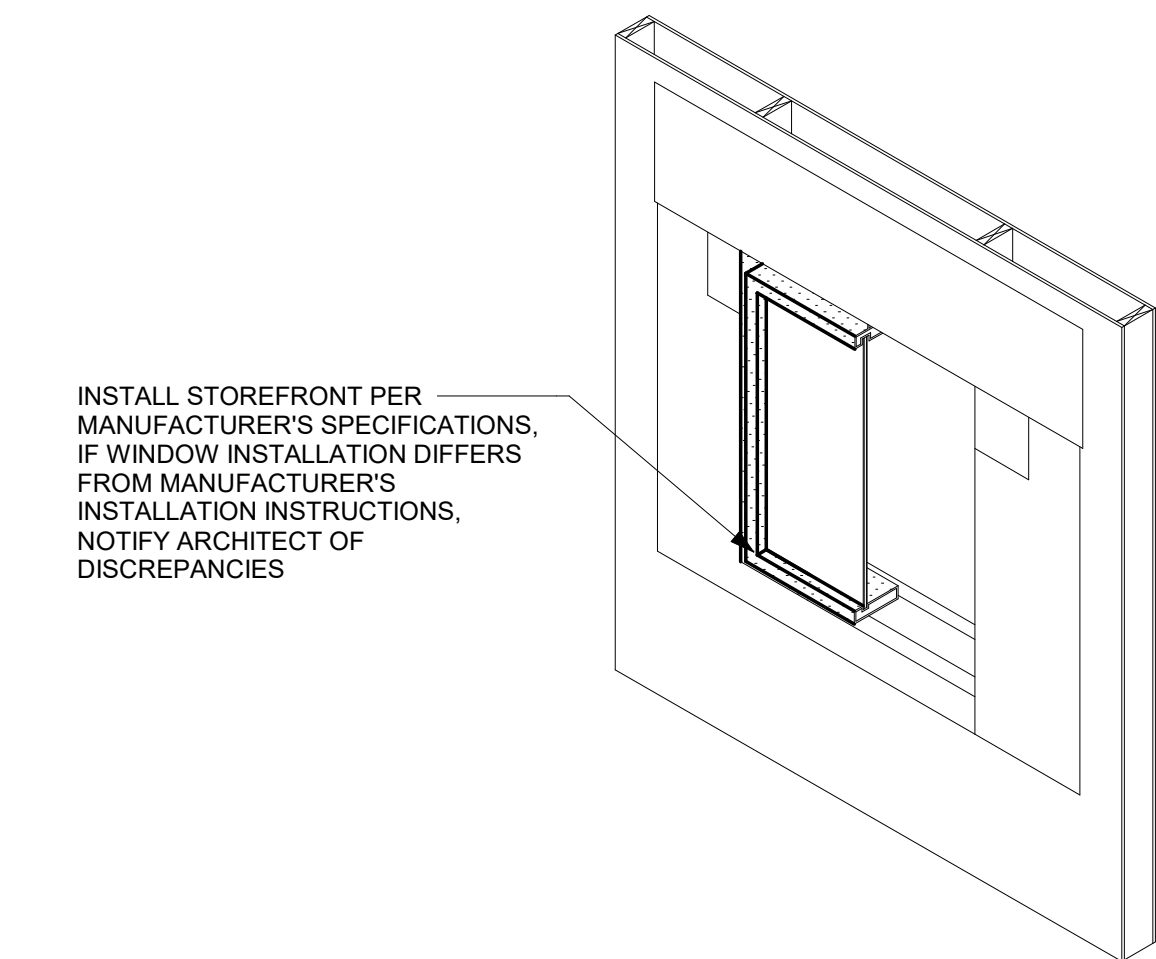
15 FLASHING - TYP. METAL WINDOW PAN  
Scale: 1" = 1'-0"



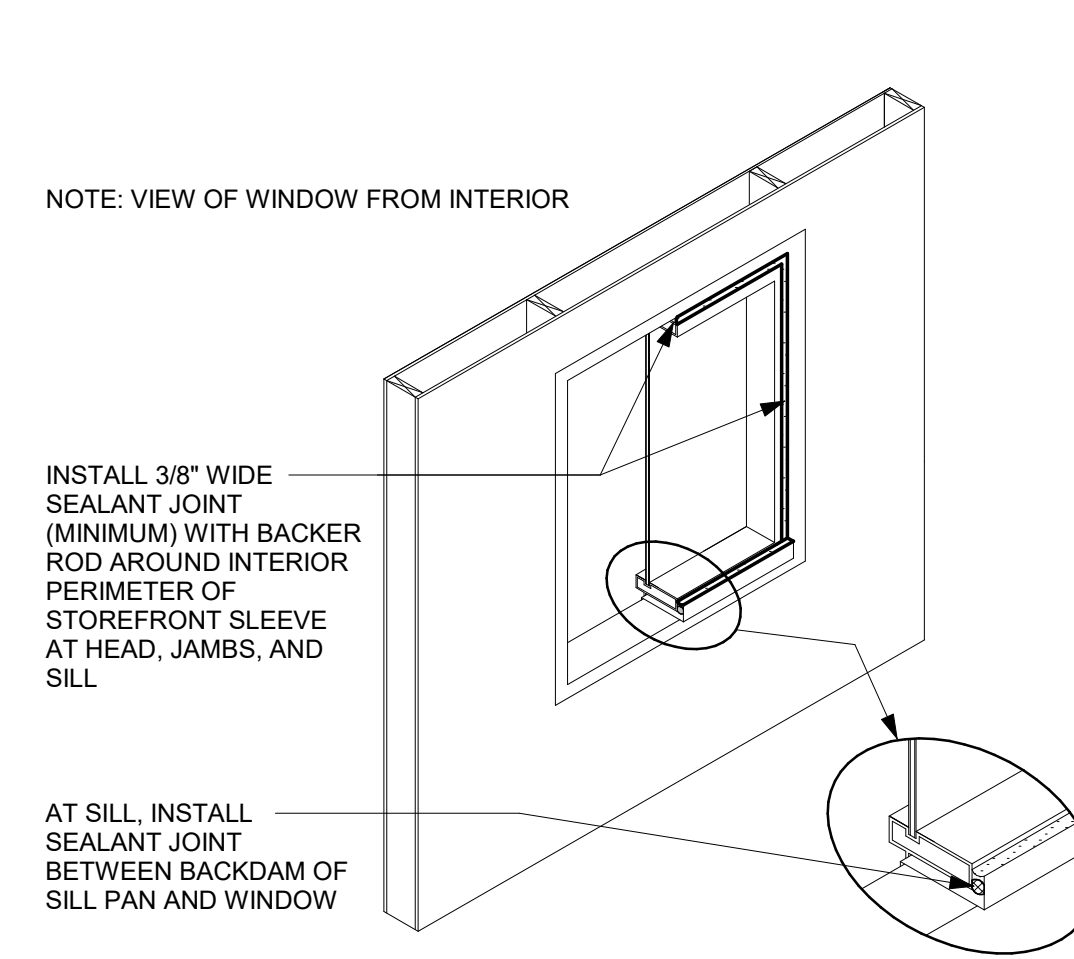
6 HEAD CORNER BOOTS  
Scale: 3/8" = 1'-0"



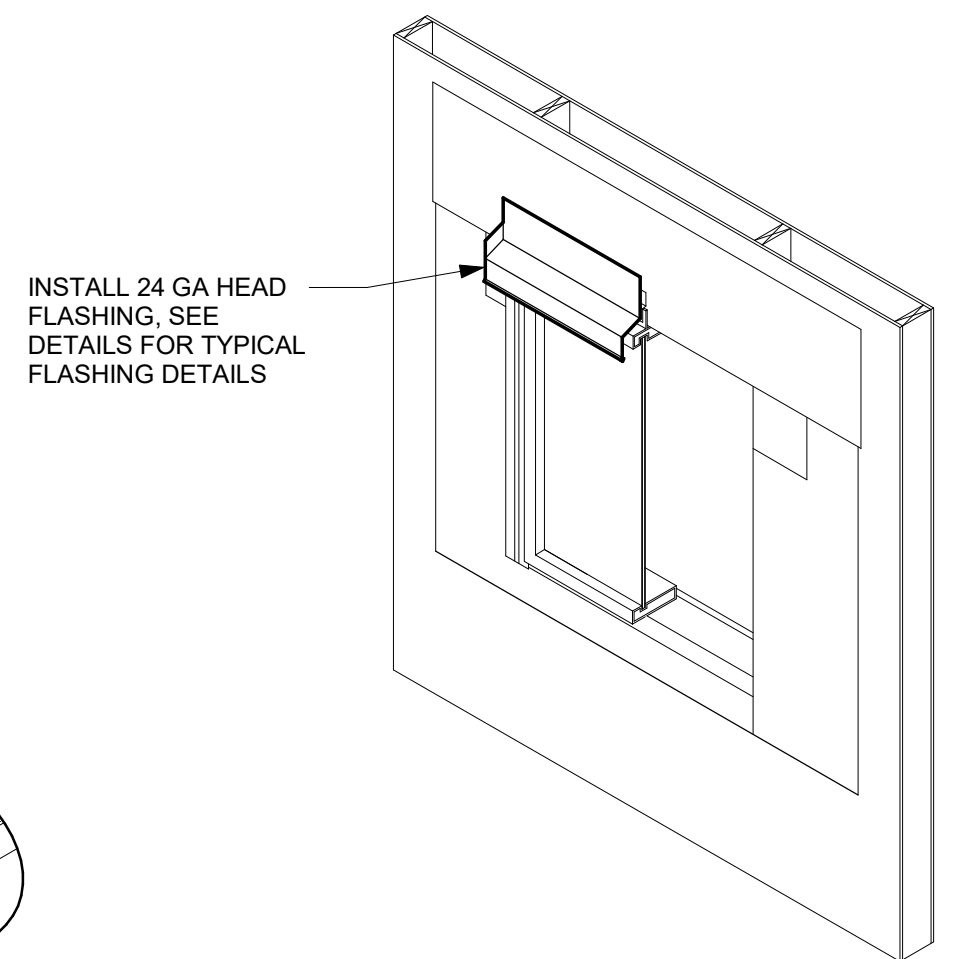
7 HEAD PENETRATION FLASHING  
Scale: 3/8" = 1'-0"



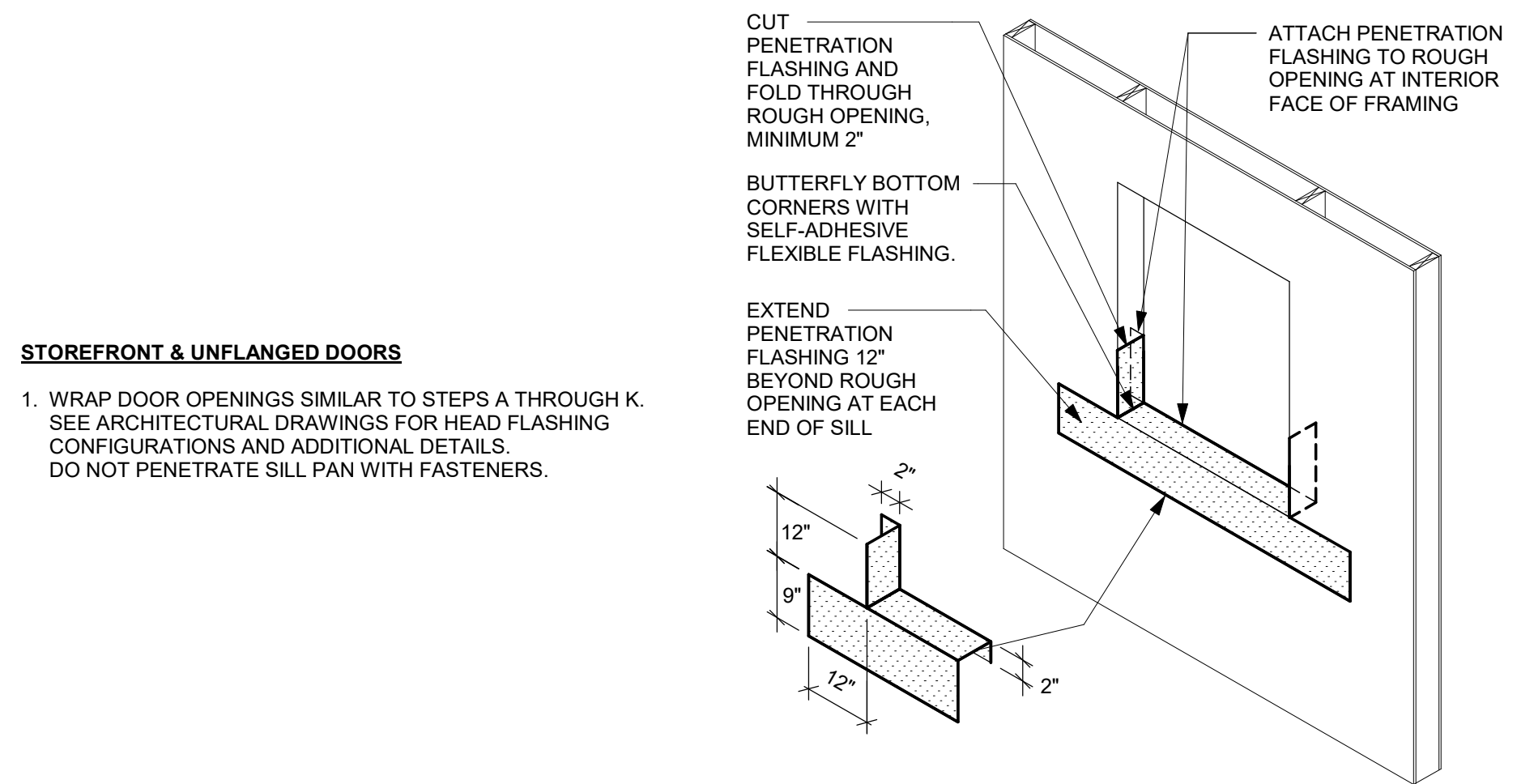
8 STOREFRONT  
Scale: 3/8" = 1'-0"



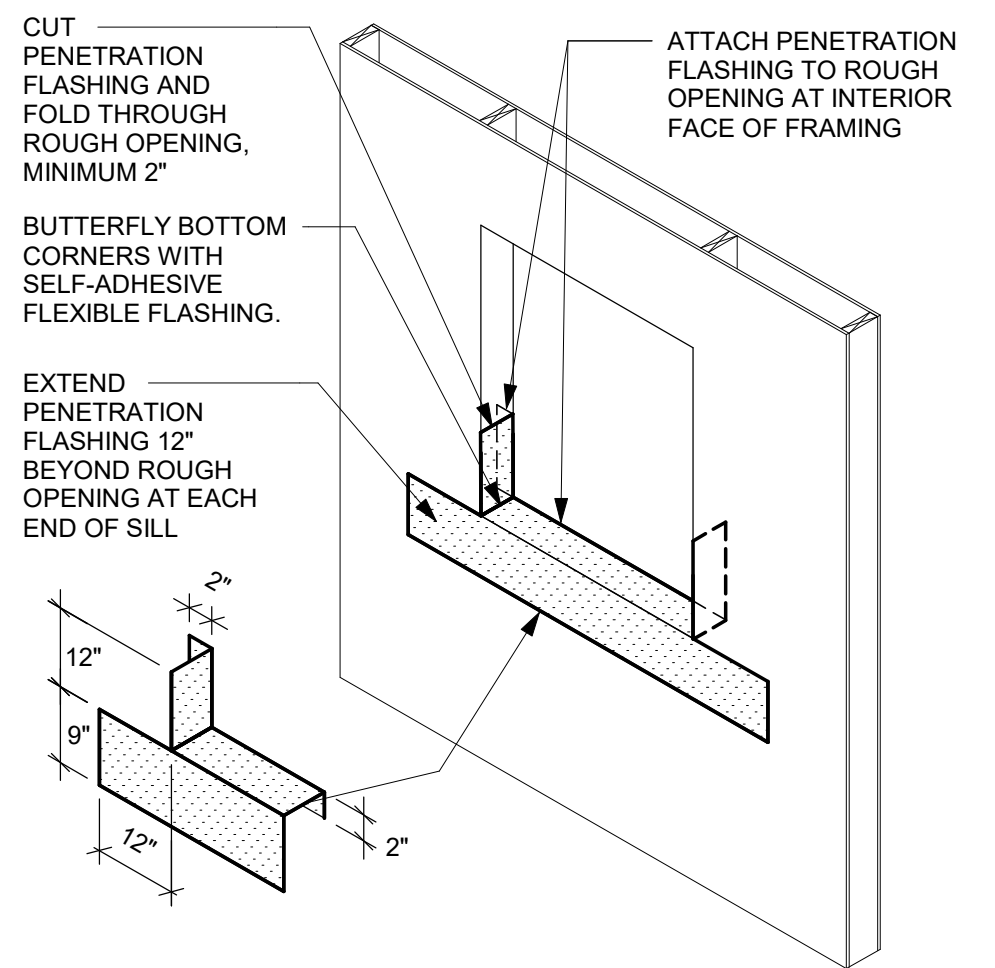
9 INTERIOR SEALANT JOINT  
Scale: 3/8" = 1'-0"



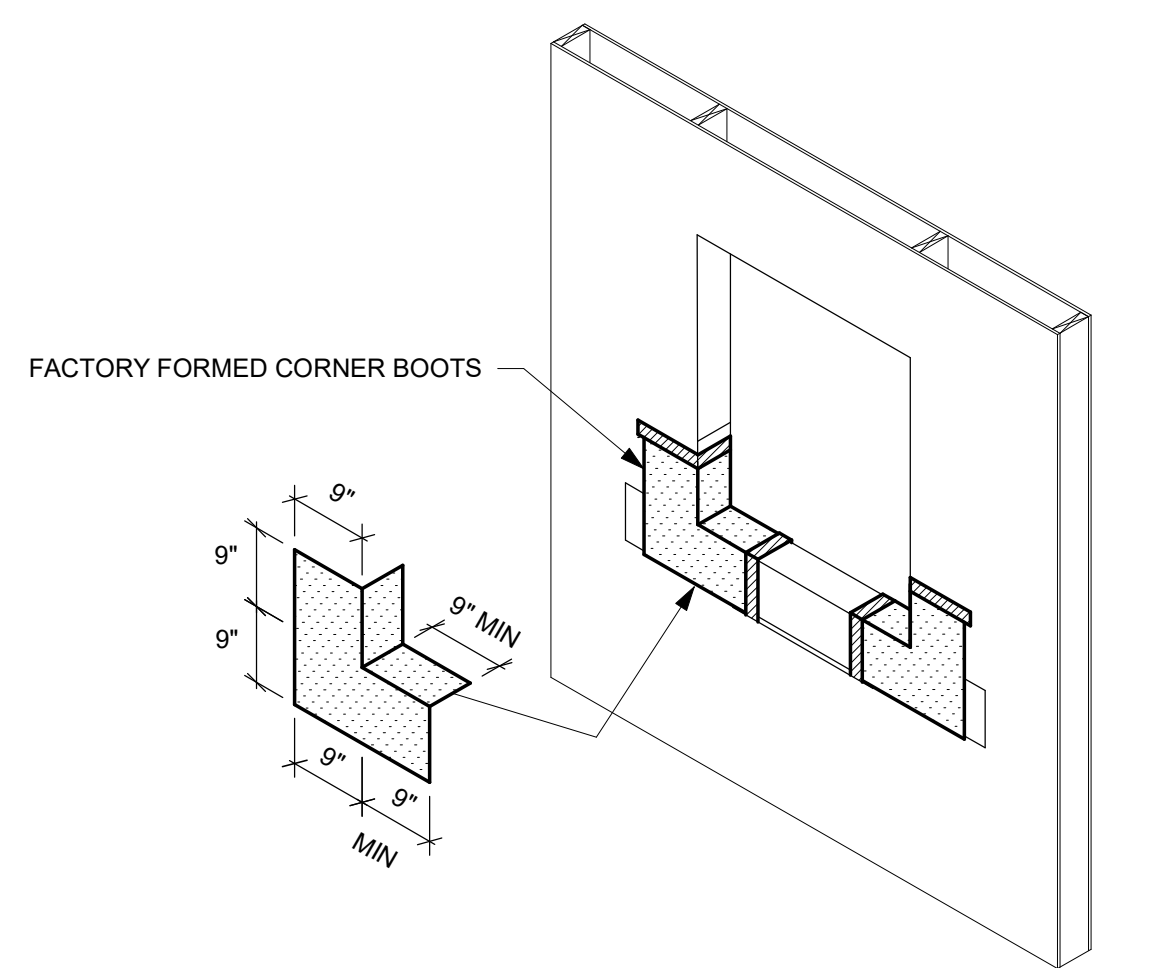
10 HEAD FLASHING  
Scale: 3/8" = 1'-0"



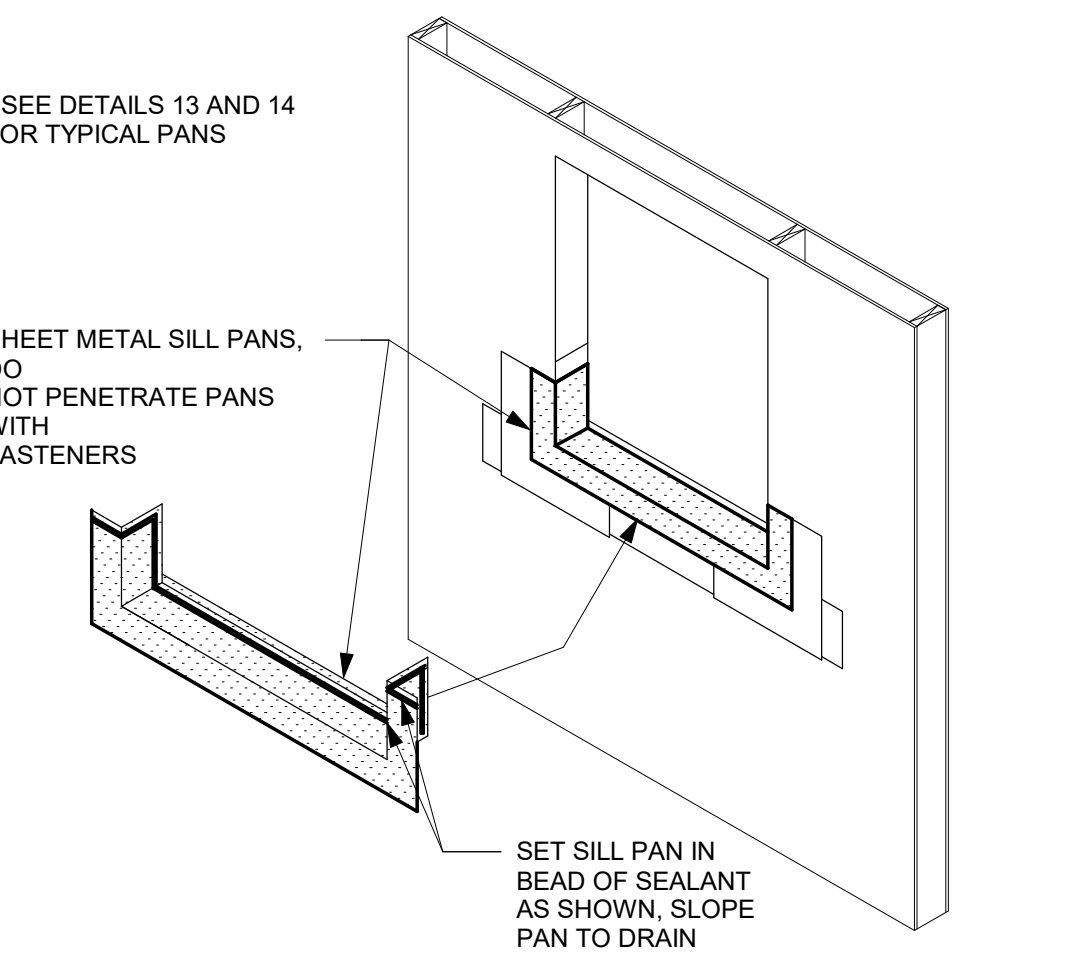
1 PENETRATION WRAP NOTES  
Scale: 3/8" = 1'-0"



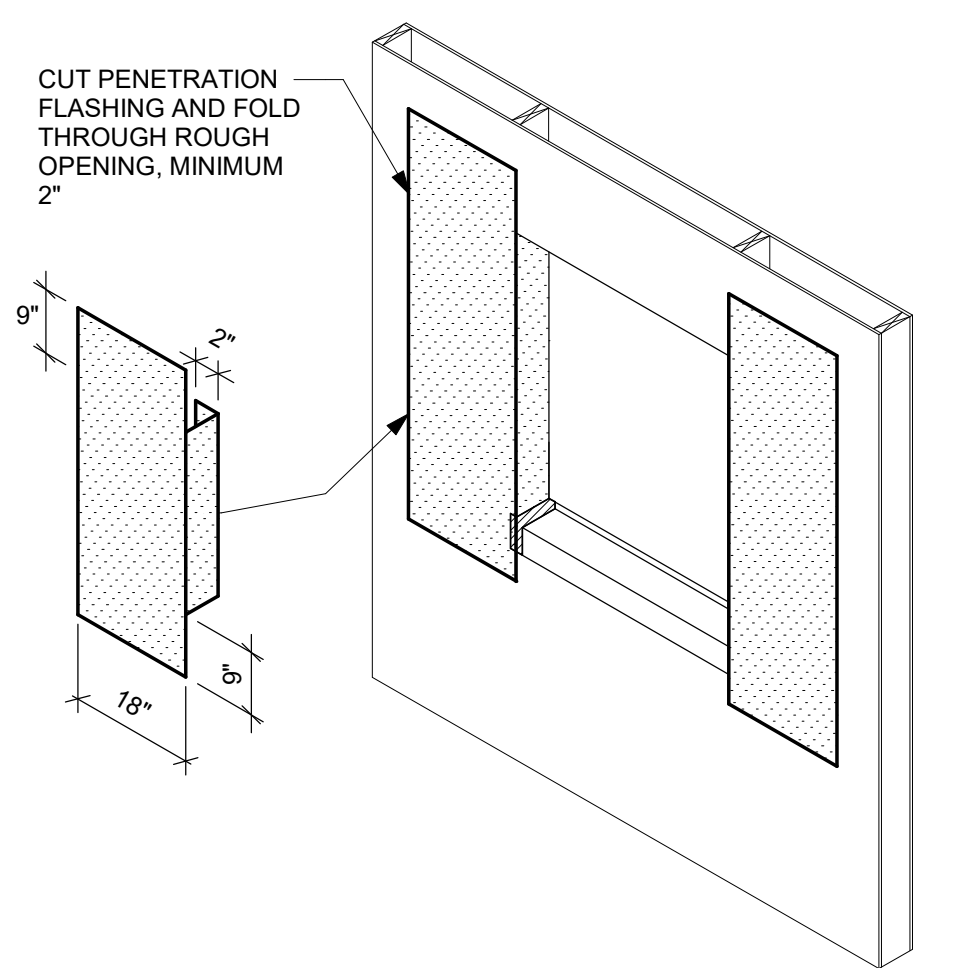
2 SILL PENetration FLASHING  
Scale: 3/8" = 1'-0"



3 SILL CORNER BOOTS  
Scale: 3/8" = 1'-0"



4 SILL PAN  
Scale: 3/8" = 1'-0"



5 JAMB PENetration FLASHING  
Scale: 3/8" = 1'-0"

REV.	DATE	DESCRIPTION

WHITSETT  
6405 BURLINGTON RD  
WHITSETT, NC 27377

TYPICAL PENETRATION FLASHING  
DETAILS

PERMIT	DATE
BID	
CONSTRUCTION	
RECORD	

PROJECT MANAGER	DESIGNER
AK	DB

JOB NO.  
2020379.16

A6001