

TRACT MAP NO. 37-21

BEING A SUBDIVISION OF PARCEL
2 OF PARCEL MAP NO. 37-55,
RECORDED IN BOOK 2 OF PARCEL
MAPS AT PAGE 3 & 3-A AND
BEING SITUATED IN THE SE 1/4 OF
THE SW 1/4 OF SECTION 8, T.5 S.,
R.33 E., M.D.M. IN THE COUNTY OF
MONO, STATE OF CALIFORNIA.

NOTES:

RECORD DATA SHOWN IS PER MAP RECORDED IN PARCEL
MAP BOOK 2, AT PAGE 3-A OF MAPS IN THE OFFICE IN
OF THE COUNTY RECORDER OF MONO COUNTY.

MONUMENTATION:

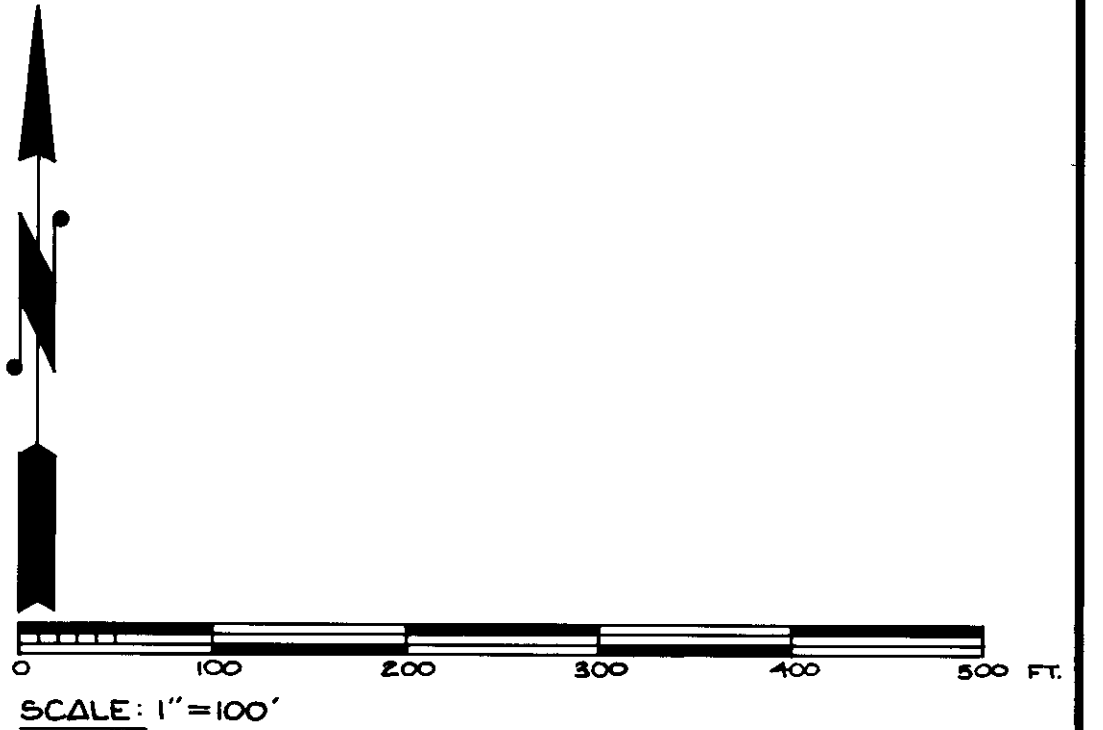
- INDICATES SET 2" IRON PIPE TAGGED L.S. 3462
FLUSH WITH THE GROUND.
- INDICATES FOUND MONUMENTS AS NOTED HEREON.

LEGEND:

R- RECORD
M- MEASURED

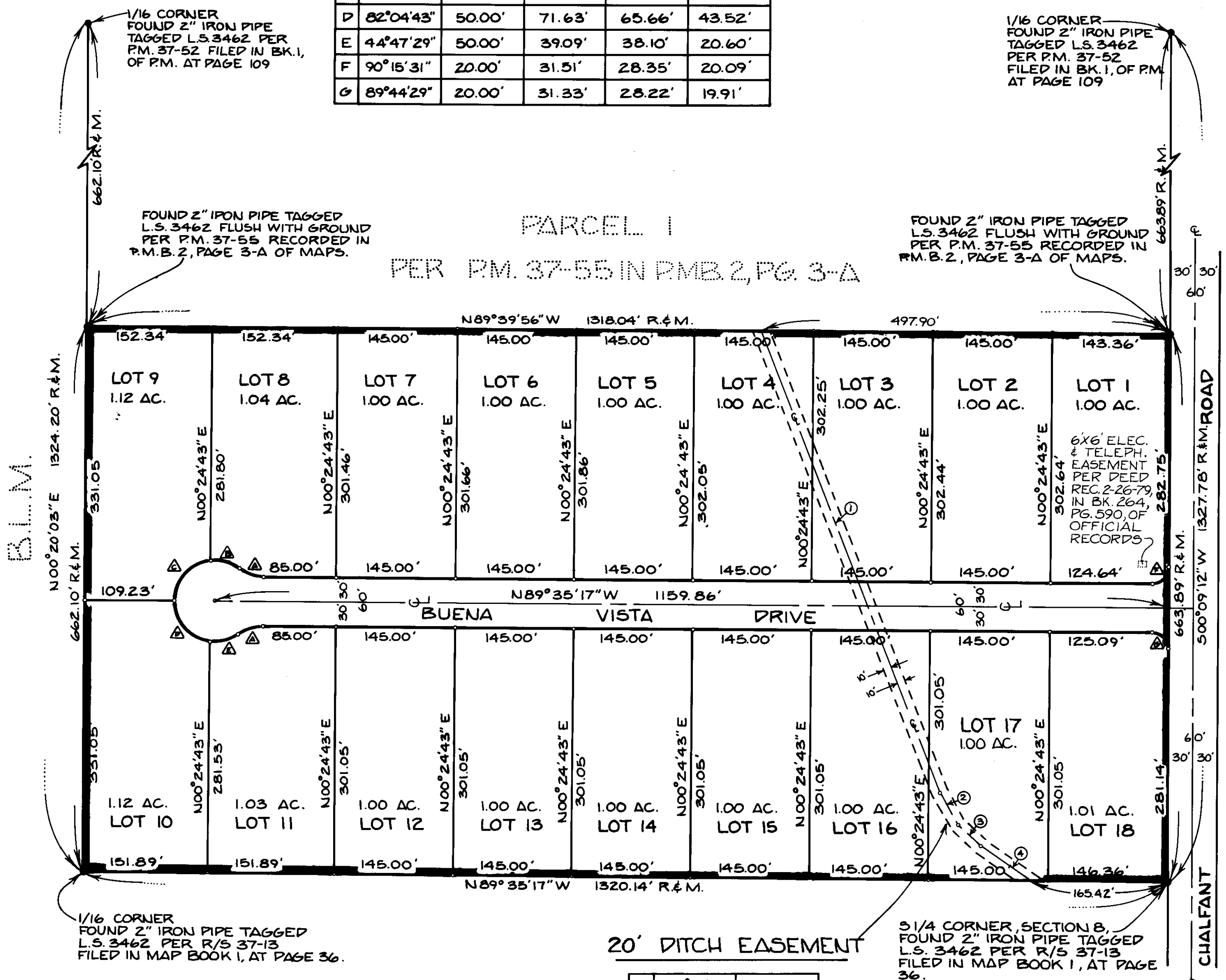
CURVE DATA

	Δ	R	L	C	T
A	36°52'12"	50.00'	32.18'	31.62'	16.67'
B	45°18'40"	50.00'	39.54'	38.52'	20.87'
C	81°33'32"	50.00'	71.17'	65.31'	41.13'
D	82°04'43"	50.00'	71.63'	65.66'	43.52'
E	44°47'29"	50.00'	39.09'	38.10'	20.60'
F	90°15'31"	20.00'	31.51'	28.35'	20.09'
G	89°44'29"	20.00'	31.33'	28.22'	19.91'



BASIS OF BEARING:

BEARINGS BASED ON FOUND MONUMENTS E 1/4
CORNER SECTION 8 TO THE NE CORNER SECTION 8
N00°29'00"E AS PER PARCEL MAP NO. 37-21
FILED IN BOOK 1, AT PAGE 57 OF PARCEL MAPS



R/S 37-13

20' DITCH EASEMENT

1.	S21°24'E	599.05'
2.	S29°08'15"E	42.65'
3.	S47°24'45"E	42.65'
4.	S55°09'E	73.05'