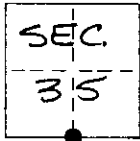


CORNER RECORD

COUNTY OF ~~MONO~~ MONO T. 6N R. 24E MDB MERIDIAN CALIFORNIA
 CORNER TYPE: GOV'T. CORNER ☐ MEANDER ☐ RANCHO ☐ CONTROL ☐ OTHER ☒
 CORNER IDENTIFICATION - DATE OF VISIT MARCH 1 19 88



5 1/4 SEC. 35 - PT. # 201

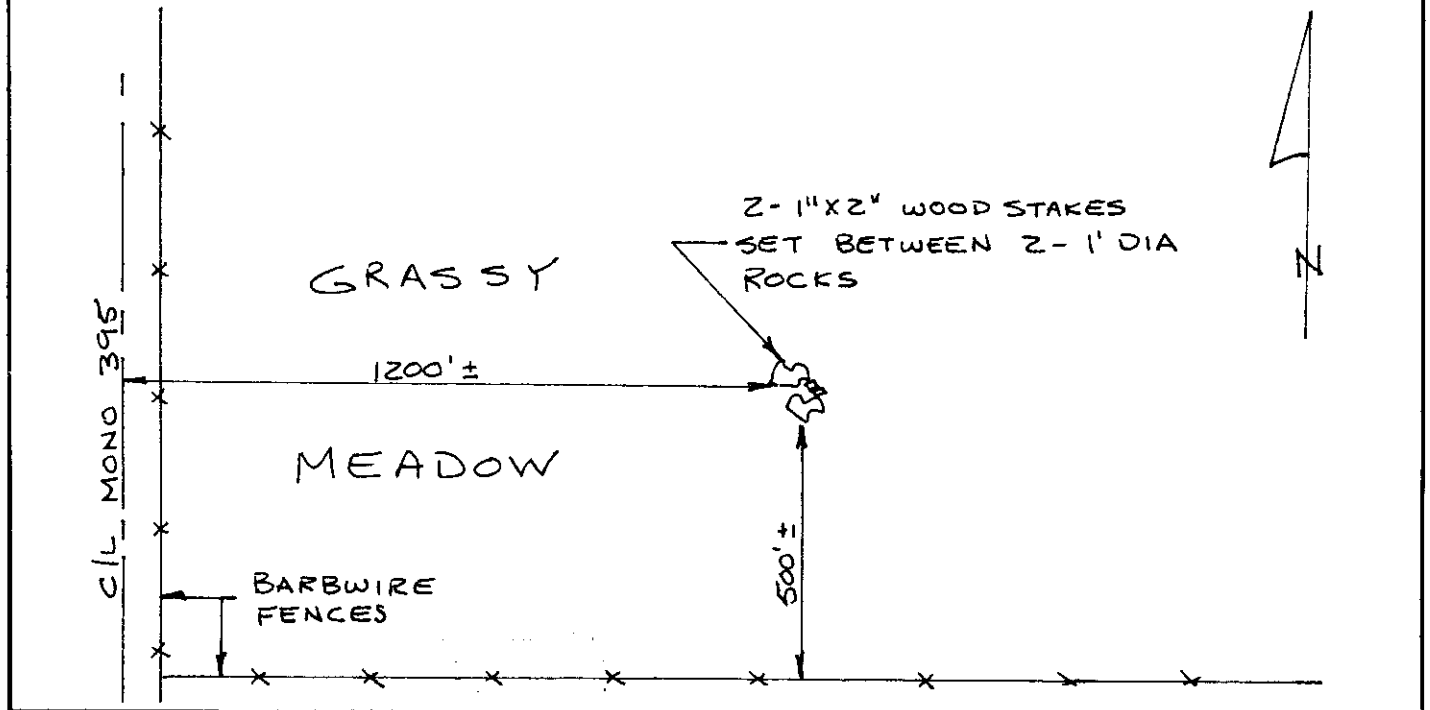
CORNER - LEFT AS FOUND ☒ FOUND AND TAGGED ☐ REESTABLISHED OBLITERATED CORNER ☐ REBUILT ☐

PHYSICAL DESCRIPTION OF CORNER FOUND: EVIDENCE AND METHOD USED TO IDENTIFY OR REESTABLISH FOUND TWO
1"X2" OLD WOOD STAKES SET BETWEEN TWO 1' DIA. ROCKS IN GRASSY
MEADOW 1200' ± E. OF C/L MONO 395 AND 500' ± N. OF BARBWIRE
FENCE RUNNING EAST AND WEST. Cal Trans brass tag set
with tack.

PHYSICAL DESCRIPTION OF MONUMENTS REBUILT OR PERPETUATED PHOTO INFO - ROLL # 221400/3
EXP. #5 - FACING EAST LOOKING DOWN
EXP. #6 - FACING WEST
EXP. #7 - FACING SOUTH
EXP. #8 - FACING EAST

CALIFORNIA COORDINATE SYSTEM ORDER: FIRST ☐ SECOND ☐ THIRD ☒ ASSUMED COORS
 STATIONS USED: NGS (USC & GS) ☐ STATE ☒ COUNTY ☐ OTHER ☐ STATION _____ STATION _____
 ZONE _____ ELEVATION _____ NORTHINGS (Y) 97,231.3 ± EASTINGS (X) 101,602.5 ±

SKETCH: (Include reference tie or witness points, remarks and topo of area)



SURVEYOR'S CERTIFICATE

THIS CORNER RECORD WAS PREPARED BY ME OR UNDER MY
 DIRECTION IN CONFORMANCE WITH THE LAND SURVEYORS ACT
 ON MARCH 1 19 88
 SIGNED: [Signature] 3/30/89
 L.S. or R.C.E. No.: A468

SEAL

COUNTY SURVEYOR'S CERTIFICATE

THIS CORNER RECORD WAS RECEIVED 3-12 19 90
 AND EXAMINED AND FILED 5-4 19 90
 BY: [Signature]
 TITLE: MONO COUNTY SURVEYOR
 DOCUMENT No. 61124-35-2
 STATEMENT ON BACK OF SHEET

YES ☐ NO ☒